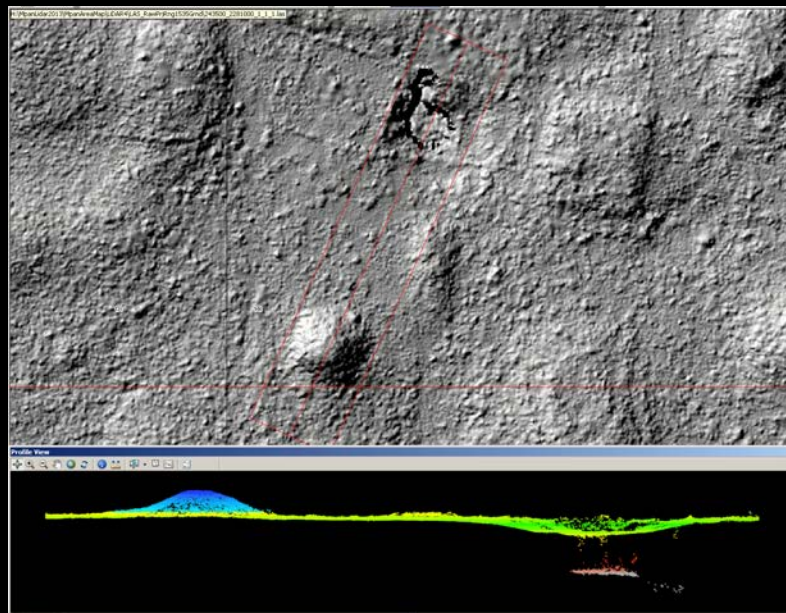


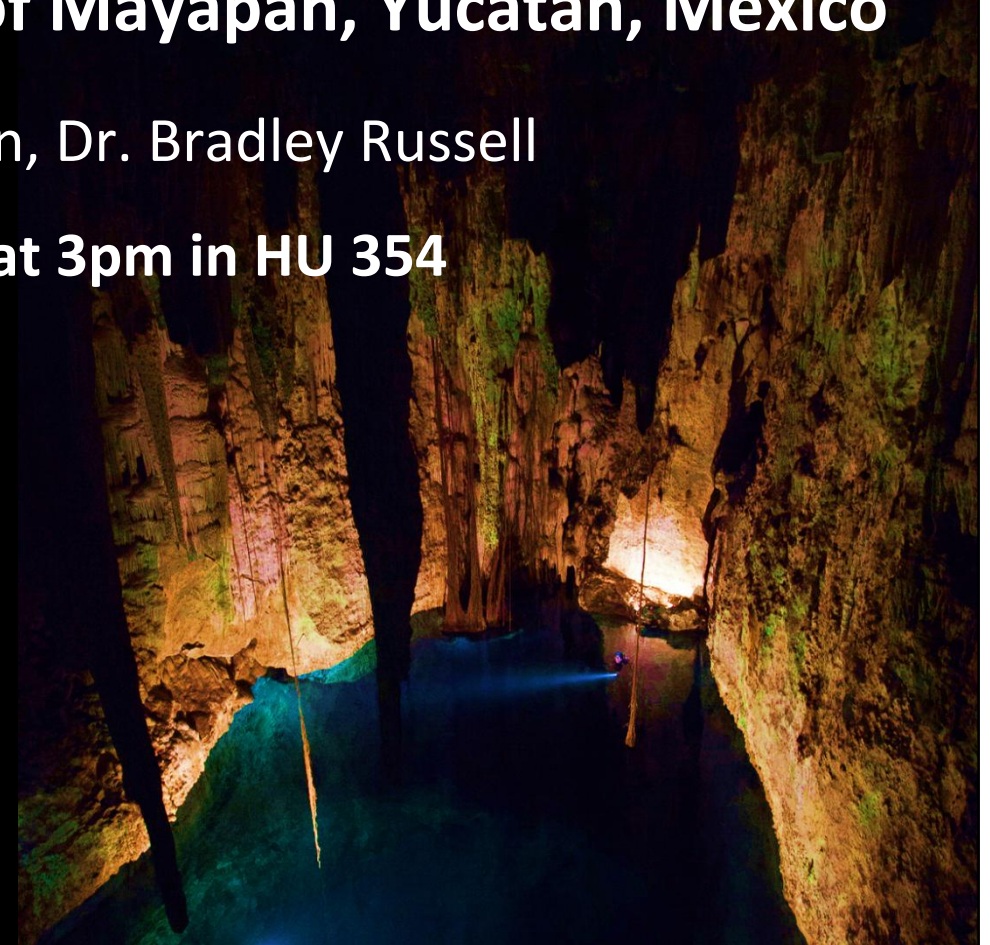
# Anthropogenic, Economic, and Sacred Landscape Studies at the Archaeological city of Mayapan, Yucatan, Mexico

Dr. Marilyn Masson, Dr. Bradley Russell

Friday Nov. 8, at 3pm in HU 354



LiDAR Survey



Underwater Archaeology



Institute for Mesamerican Studies  
<http://www.albany.edu/ims/>

