



UNIVERSITY AT ALBANY
State University of New York

Facilities Master Plan Update

2022 - Summary

UNLEASH
GREATNESS





What is a Facilities Master Plan?

A 10-year roadmap that prioritizes, supports and sequences new and existing academic initiatives and future facilities needs that advance the academic, research and mission of the University's Strategic Plan.

Most Recent Master Plans

1998

2012



What is a Facilities Master Plan?

Phases

- I Background**
- II Assessment of Conditions**
- III Analysis of Space Needs**
- IV Concept Alternatives**
- V Final Recommendations**



What is a Facilities Master Plan Update?

Phases

- I Background**
- II Assessment of Conditions**
- III Analysis of Space Needs**
- IV Concept Alternatives**
- V Final Recommendations**



2012 Guiding Principles

- Make the appropriate investment at each UAlbany Campus
- Cluster programs to encourage value-added synergies
- Utilize University facilities to their highest and best use
- Minimize disruptions, number of relocations, and ensure full functionality
- Renovate each building for a blend of space types including general purpose classrooms and support spaces
- Build new to facilitate renovation and growth...
- Complete renovation of legacy buildings in a 30-year time frame...



Major construction or renovations since 2012

2013 **Massry School of Business**

2013 **Casey Stadium**

2015-17 **Campus Center**

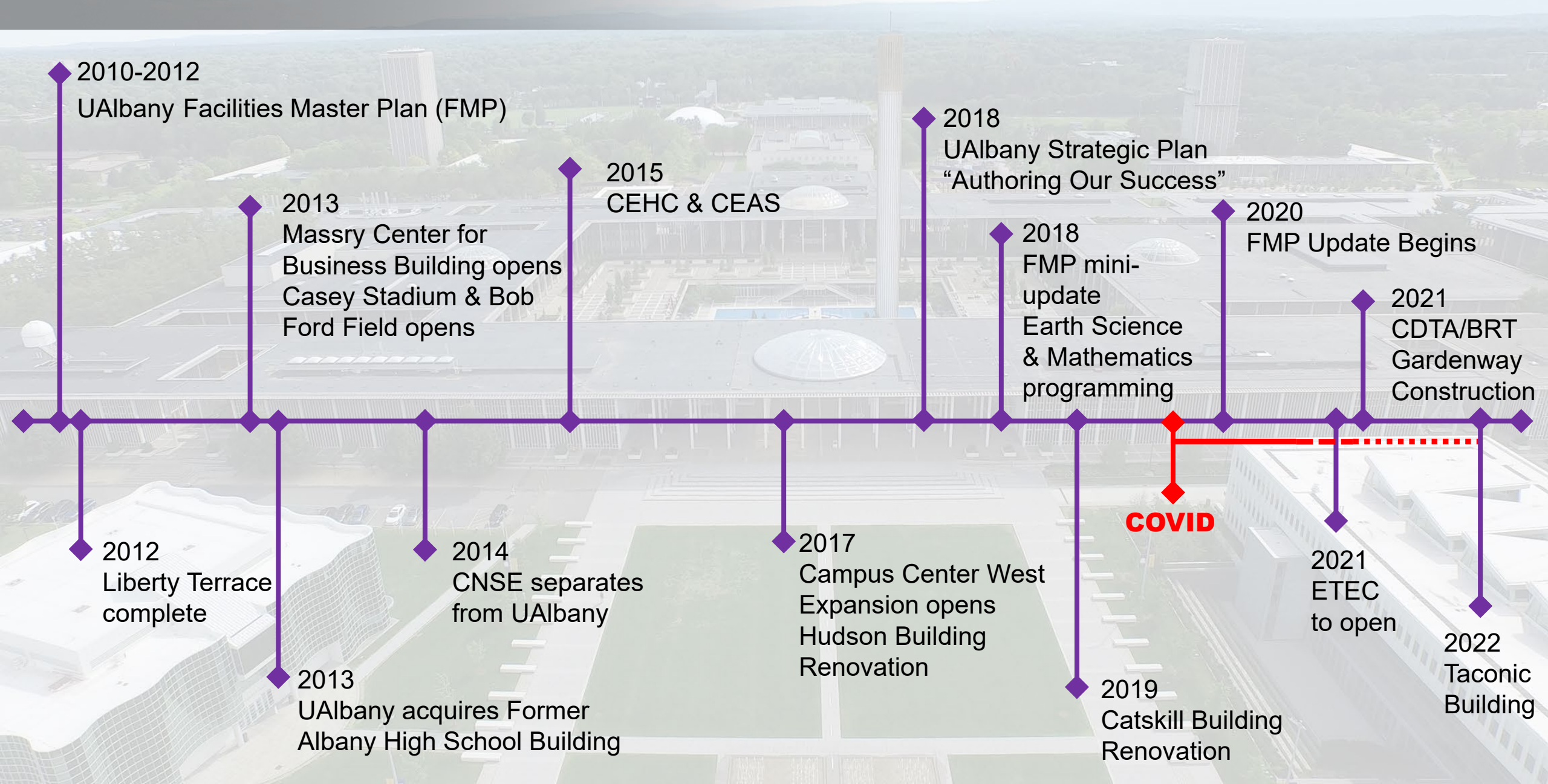
2017 **Hudson**

2019 **Catskill**

2020+ **Lecture Center**

2021 **ETEC**

2022 **Taconic**





Facilities Master Plan Update

Goals

- **Consider planned growth including CEHC and CEAS**
- **Potential repurposing of Alumni Quad**
- **Leased space reductions (including SPH)**
- **Evaluate appropriate future residential model**



Facilities Master Plan Update

Student Housing

- **Analysis Summary**
- **Concept and Alternatives**
- **Recommendations and Final Review**

Academic Analysis and Concept Development

- **Existing program summary**
- **Academic growth and additions**
- **Opportunities, challenges and alignment with facility resources and available capital funding over next 10 years**
- **Recommendations and Final Review**

Look Ahead

- **Campus Community Outreach**
- **Final Recommendations**

Schedule:

> FMP Initiated

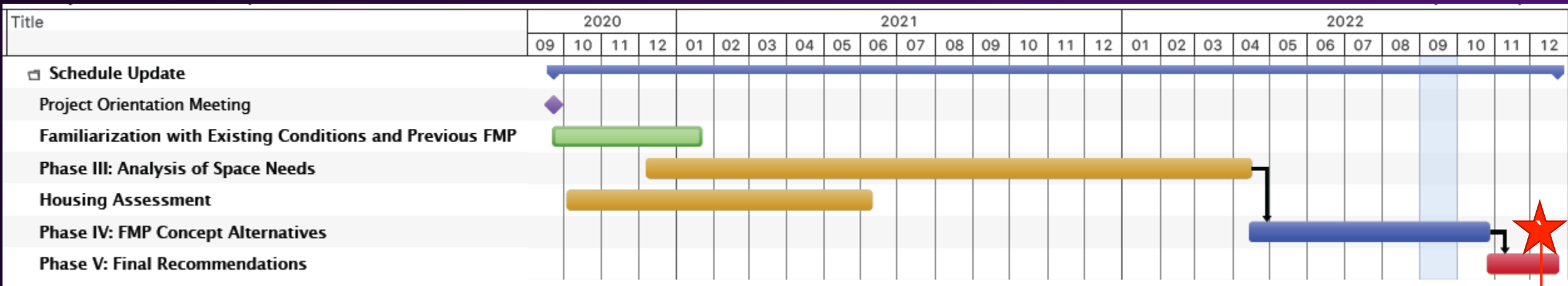
Oct 2020

> Completion

Dec 2022



FMP Project Schedule



**We Are
Here**



Data Gathering

Visioning session: goals and aspirations *(12/16/2020)*

Academic Programming

Enrollment projections (coordination with Budget Metrics development)

Steering committee meetings

Deans meetings (started April 2021)

Scenario Development

Student Housing

Student focus group meetings *(10/2020)*

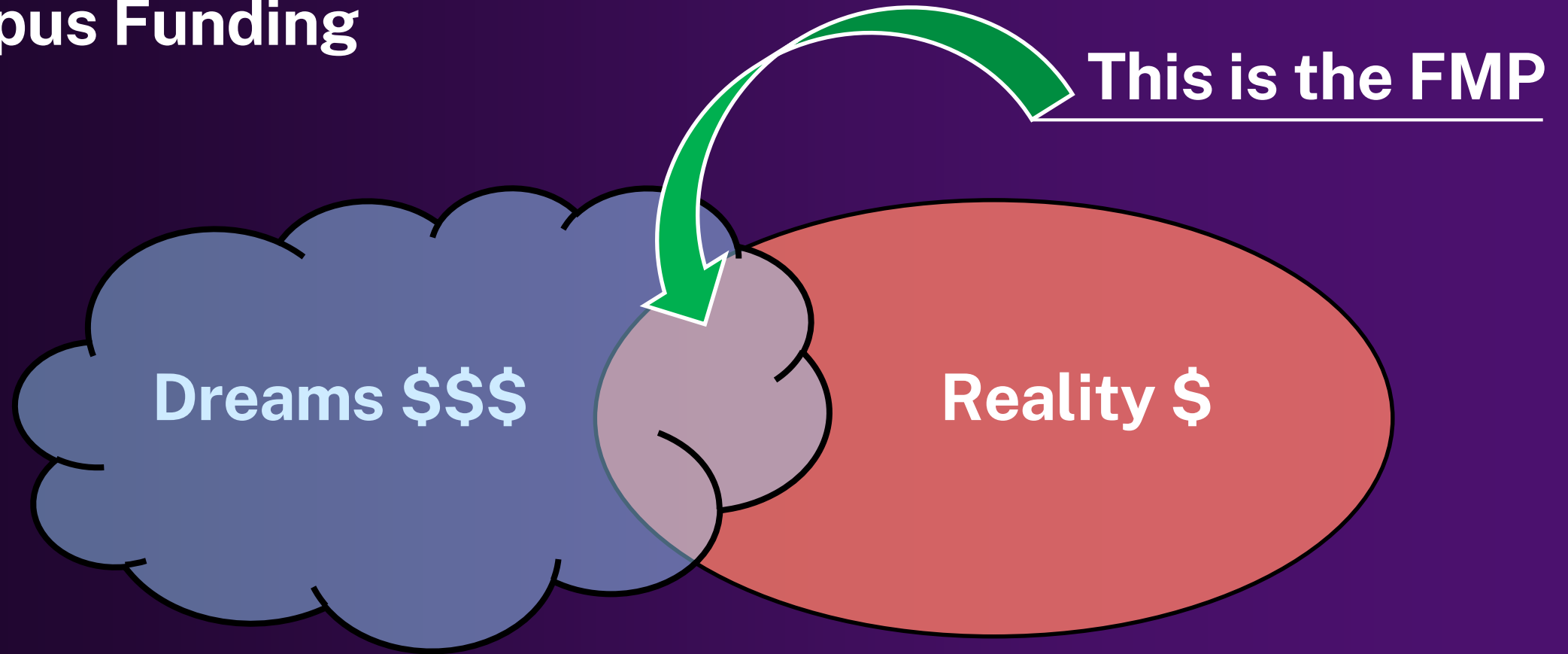
Student survey *(2/2021)* 1,300 respondents

Strategic Asset Value (SAV) work session *(1/29/2021)*

Stakeholder Meetings in March



Campus Funding





Campus Funding

\$147.3 / Five Years

Current Planned Amount: \$215M

- **Former Albany High School - \$29M (#1 Priority)**
- **Building 30 (chem labs) - \$53M (#2 Priority)**
- **Lecture Center - \$29M**
- **Physical Education - \$24M (Initial - \$73M Complete)**

Total: \$135M (\$184M)



\$80 million already committed

Yearly

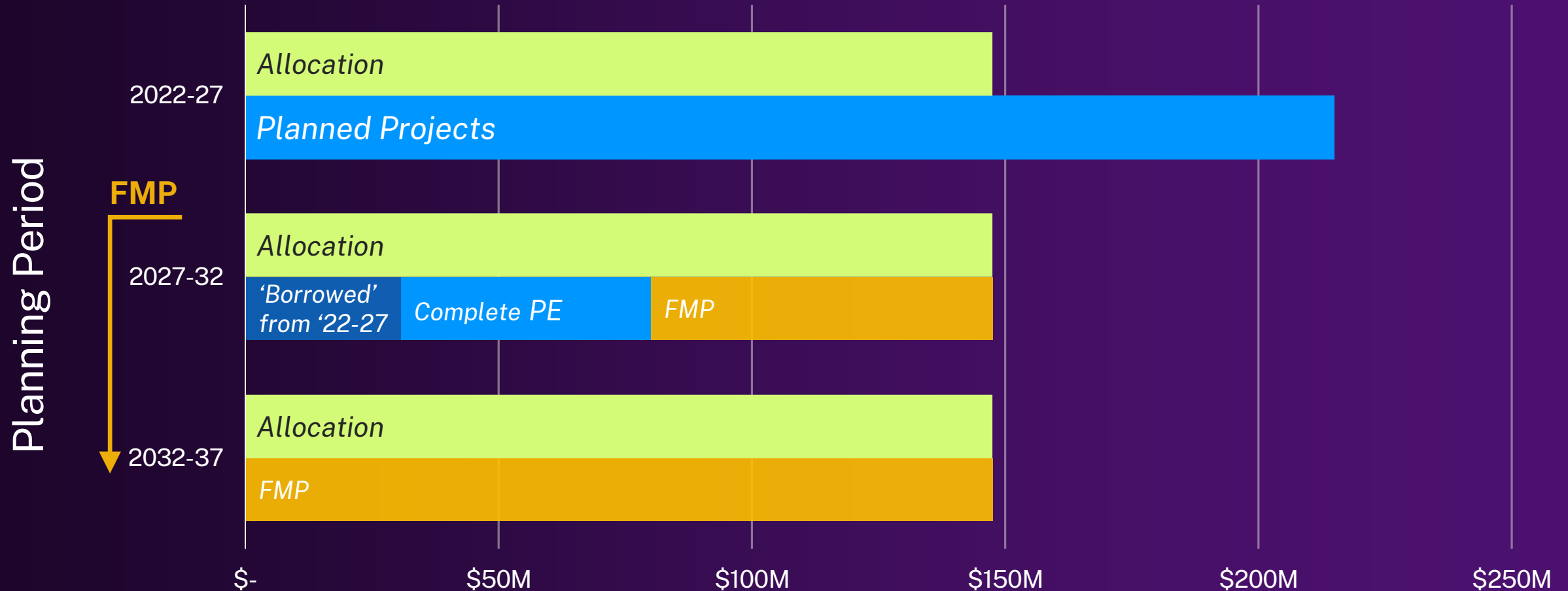
- Podium Deck
- Arc Flash
- ADA Upgrades
- Classroom Renovations
- BMS Upgrades
- MCM
- Site Reps

2022

- SEFCU Bleachers
- Chiller Replacement
- Podium Fire Doors

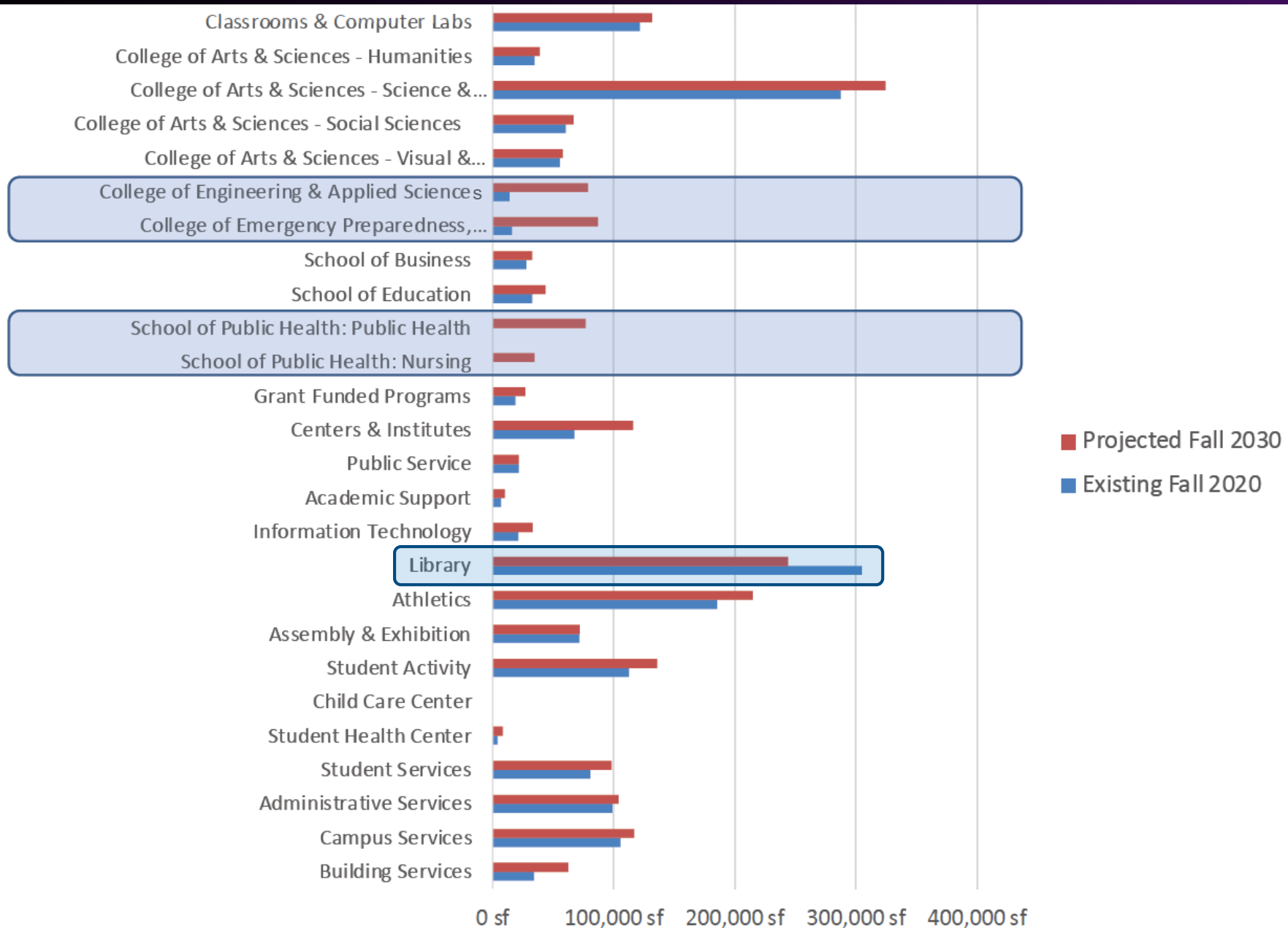


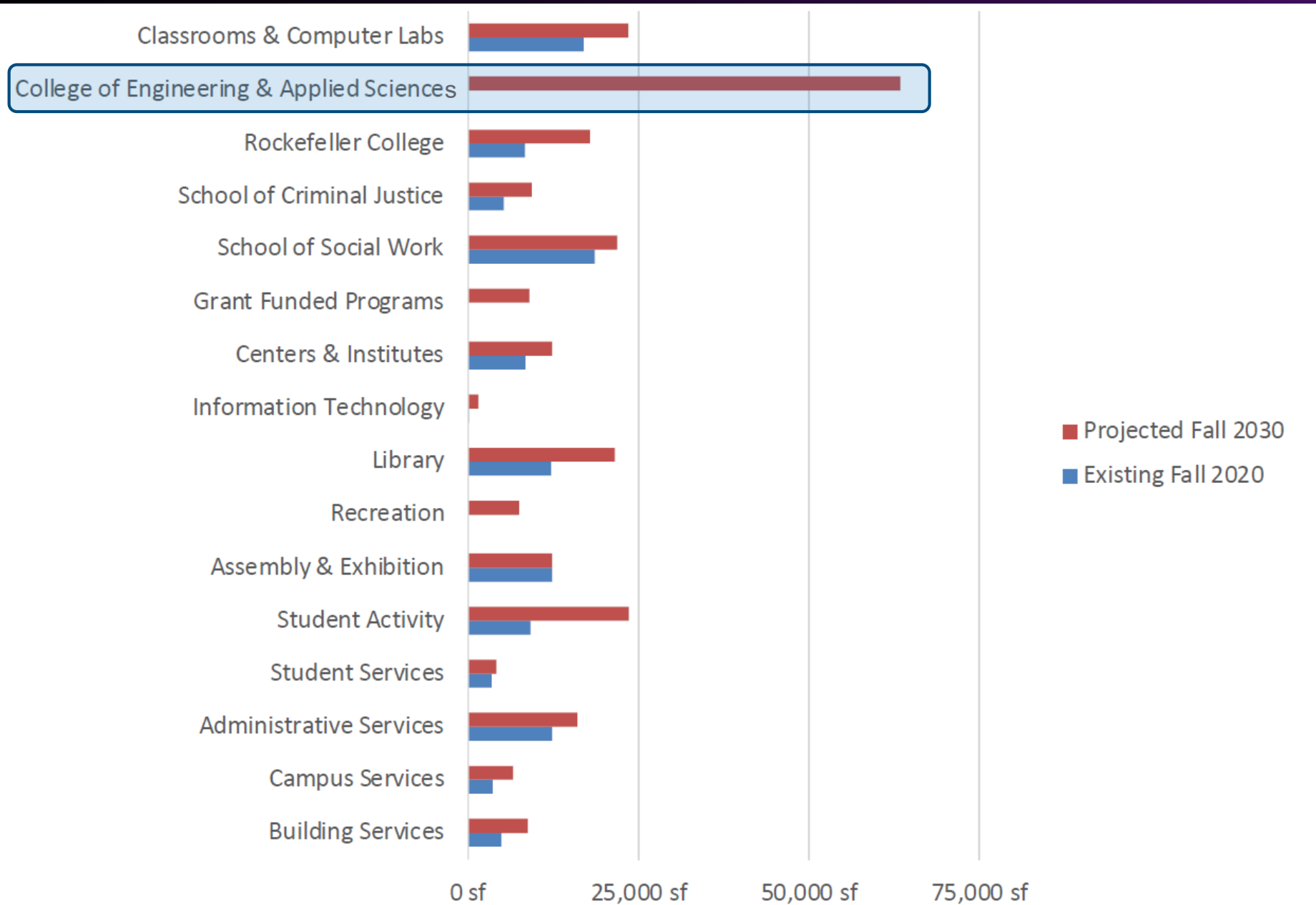
Campus Funding

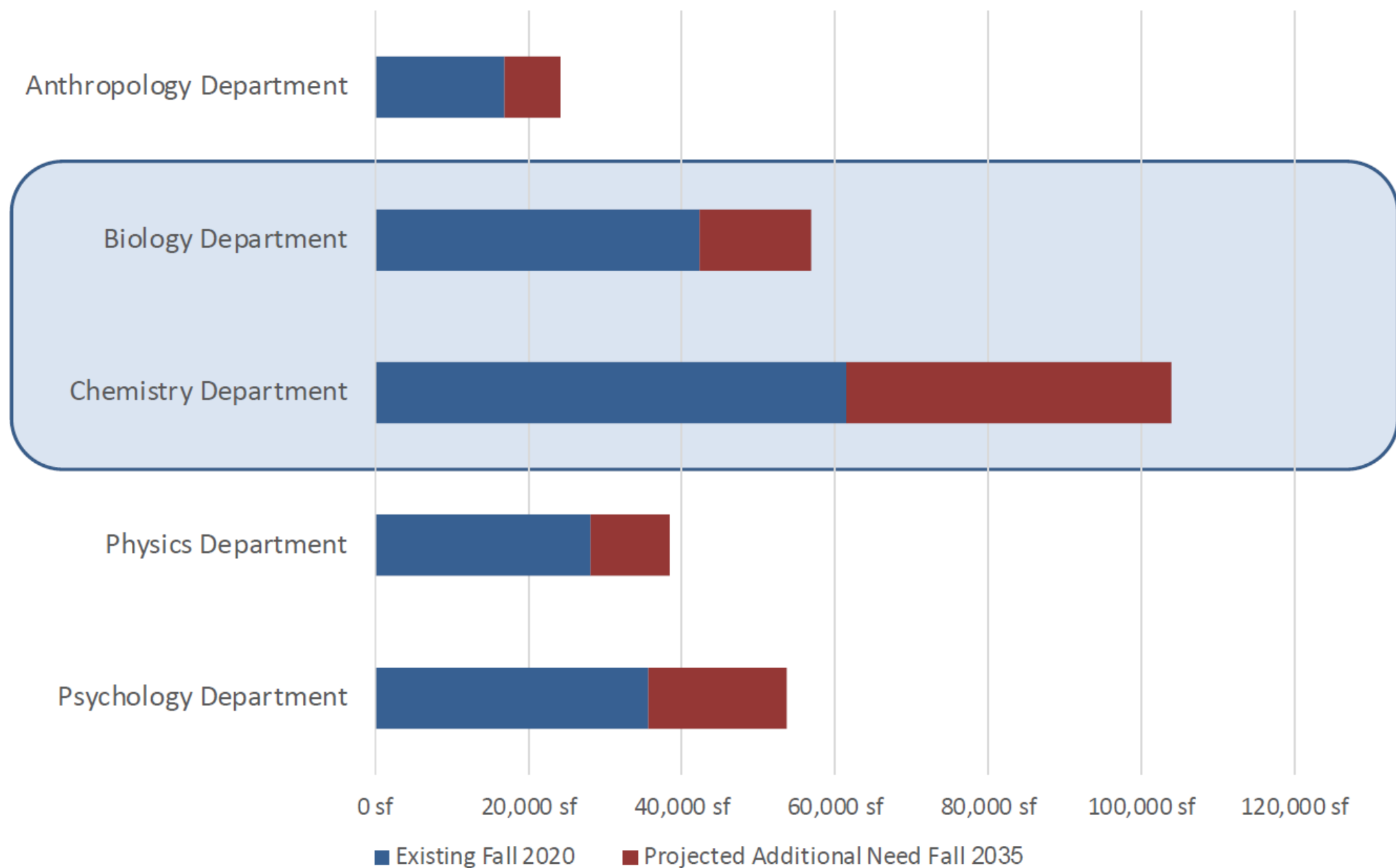




Analysis of Space Needs









Analysis of Space Needs

Infrastructure

- Biology
- Chemistry
- Physics
- Psychology

Growth

- CEHC non-departmental
- Informatics non-dept
- Information Studies non-dept
- Environmental and Sustainable Engineering
- Anthropology

Incremental expansion is approx. 270K GSF
(No net vacant space without renovation/new building)

Additions

- Art & Art History
- School of Public Health
- Health Related Programs
- Nursing
- Game Design
- Mechanical Engineering
- Bioengineering
- Engineering Core

Leaves approx. 200K GSF for
'New' programs

...How do we get there?



Concept Alternatives



Focus Areas

School of Public Health

- ▶ Move to Uptown Campus?
- ▶ Nursing
- ▶ Adjacencies





Focus Areas

Downtown

- ▶ FAHS - CEAS
- ▶ Support Facilities
- ▶ Proximity to Alumni Quad





Focus Areas

East Podium

- ▶ “New” Sciences
- ▶ Chemistry/Physics/Biology
- ▶ Program Opportunities





Focus Areas

CEHC

- ▶ Expand footprint at ETEC?
- ▶ Uptown Growth





Focus Areas

Alumni Quad

- ▶ Public Private Partnership?
- ▶ Alternate Funding
- ▶ A New Idea?





Focus Areas

Libraries

- ▶ University/Science Library
- ▶ Student Services
- ▶ New Space Opportunities





Recommendations

Approach

Critical Maintenance

- *Renovation and Modernization of Libraries*

Strategic Initiatives

- *New Science Building*
- *New Engineering Building*
- *AI Supercomputing Initiative*

Focus:

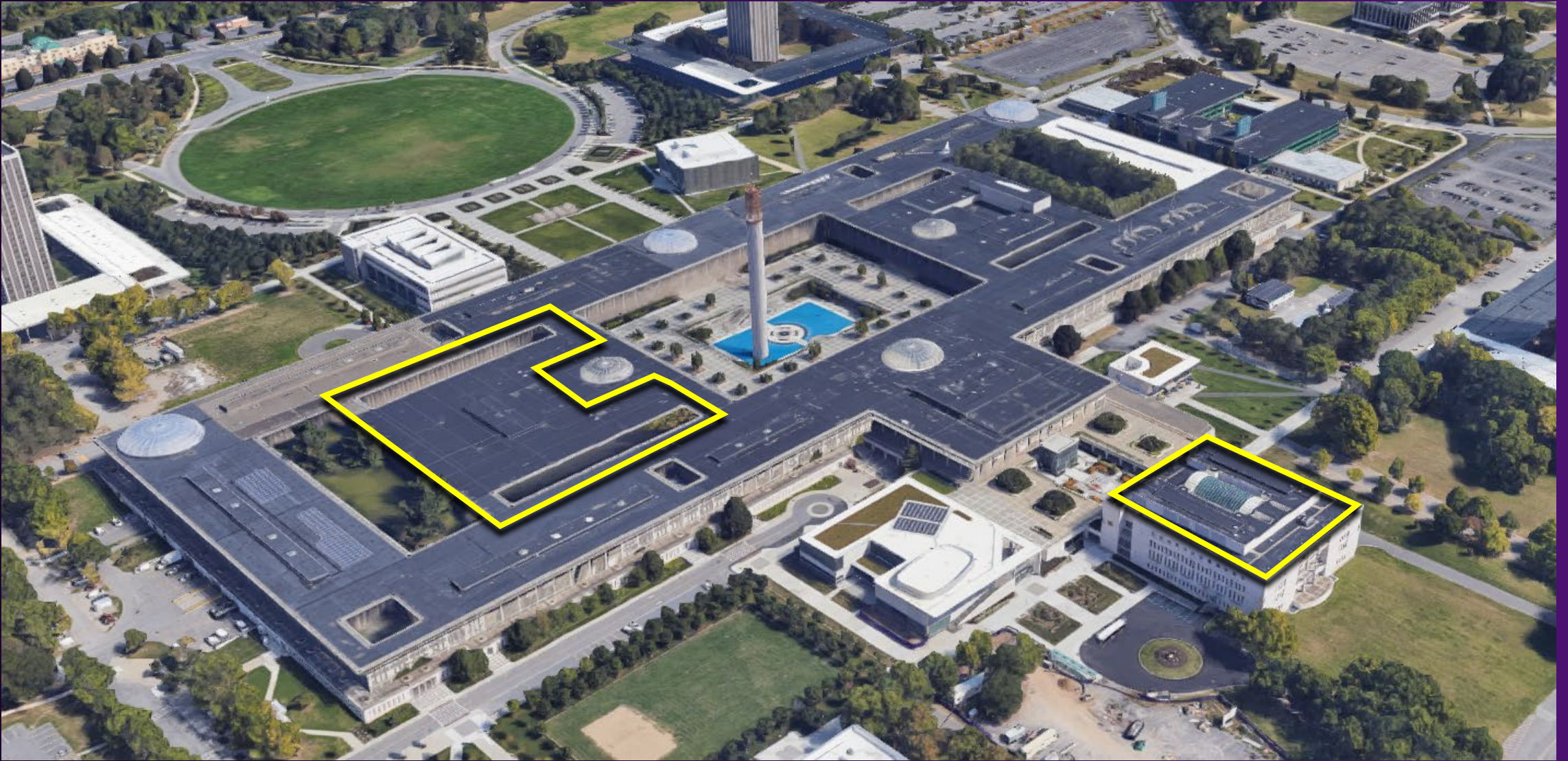
Research

Enrollment

*Student
Experience*



Uptown Libraries



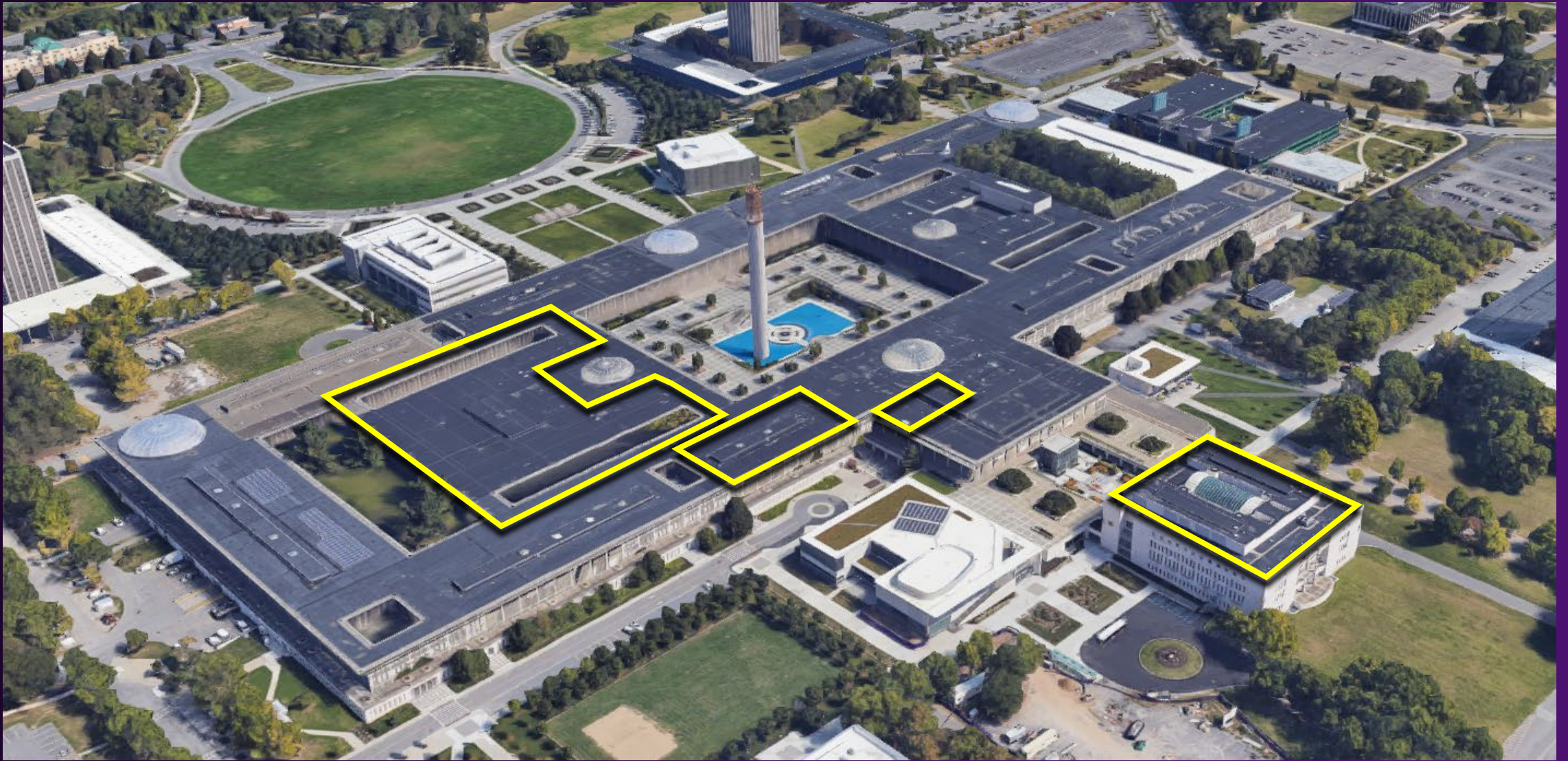


“It’s not what libraries hold; it’s who libraries serve”

- Gwen Evans, MLIS, MA, Executive Director OhioLINK Library Advisory Council



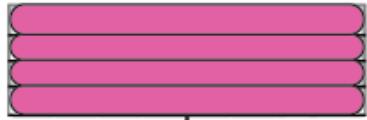
Library Renovation





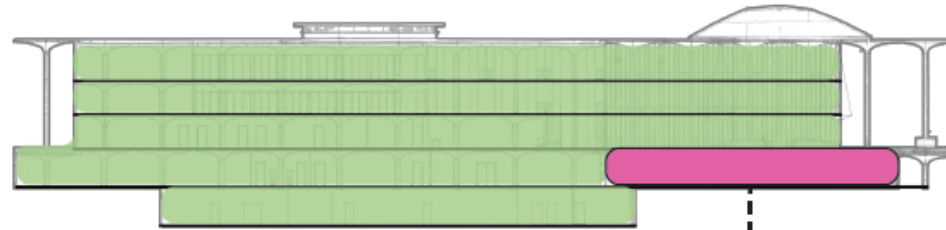
Existing

Taconic



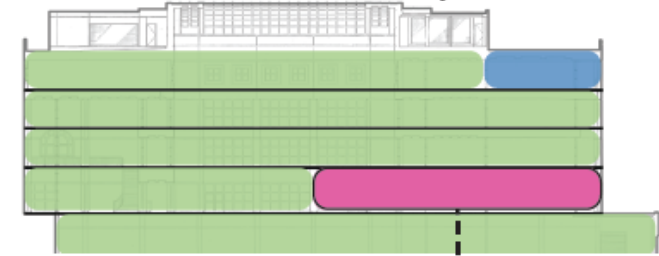
Undergraduate Education
Student Engagement
Center for Undergraduate Research and
Creative Engagement (CURCE)
Academic Support Center
A+ Tutoring
Center for Experimental Learning

University Library



Advisement Services Center
Educational Opportunity Program (EOP)
Institute For Teaching, Learning &
Academic Leadership (ITLAL)

Science Library



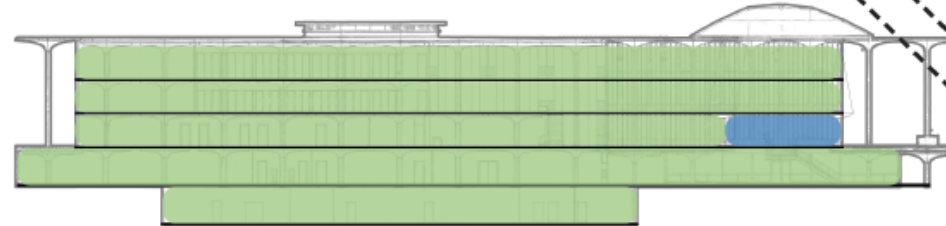
Career Development Center
International Education

Upon Completion

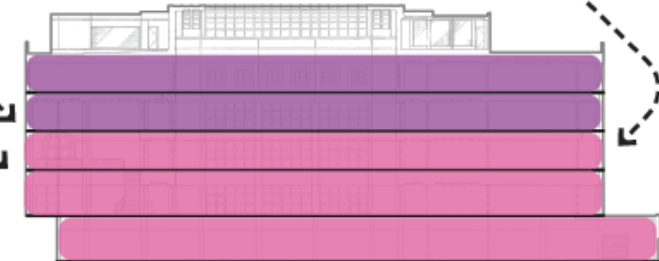
Taconic



University Library



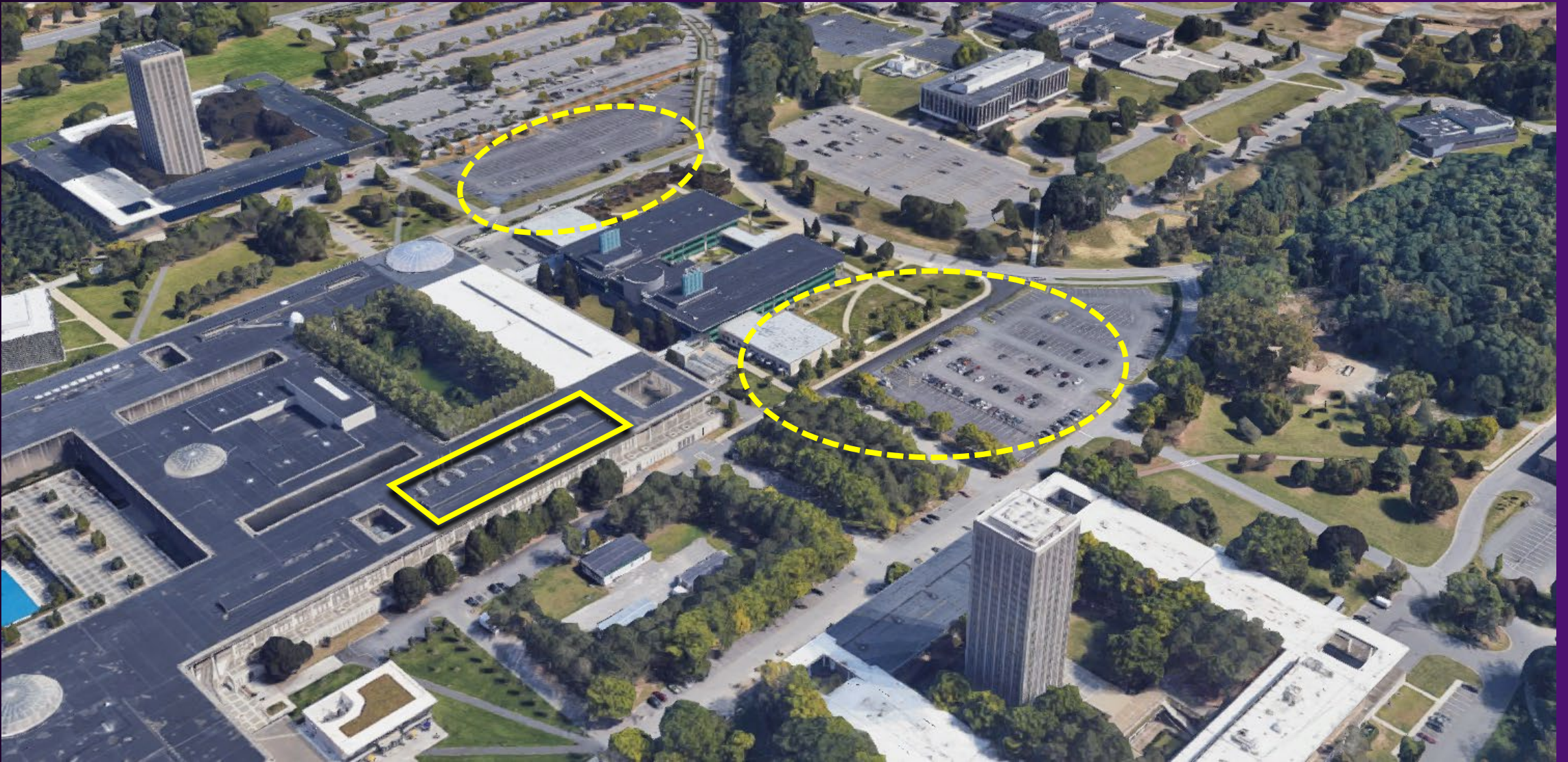
Science Library

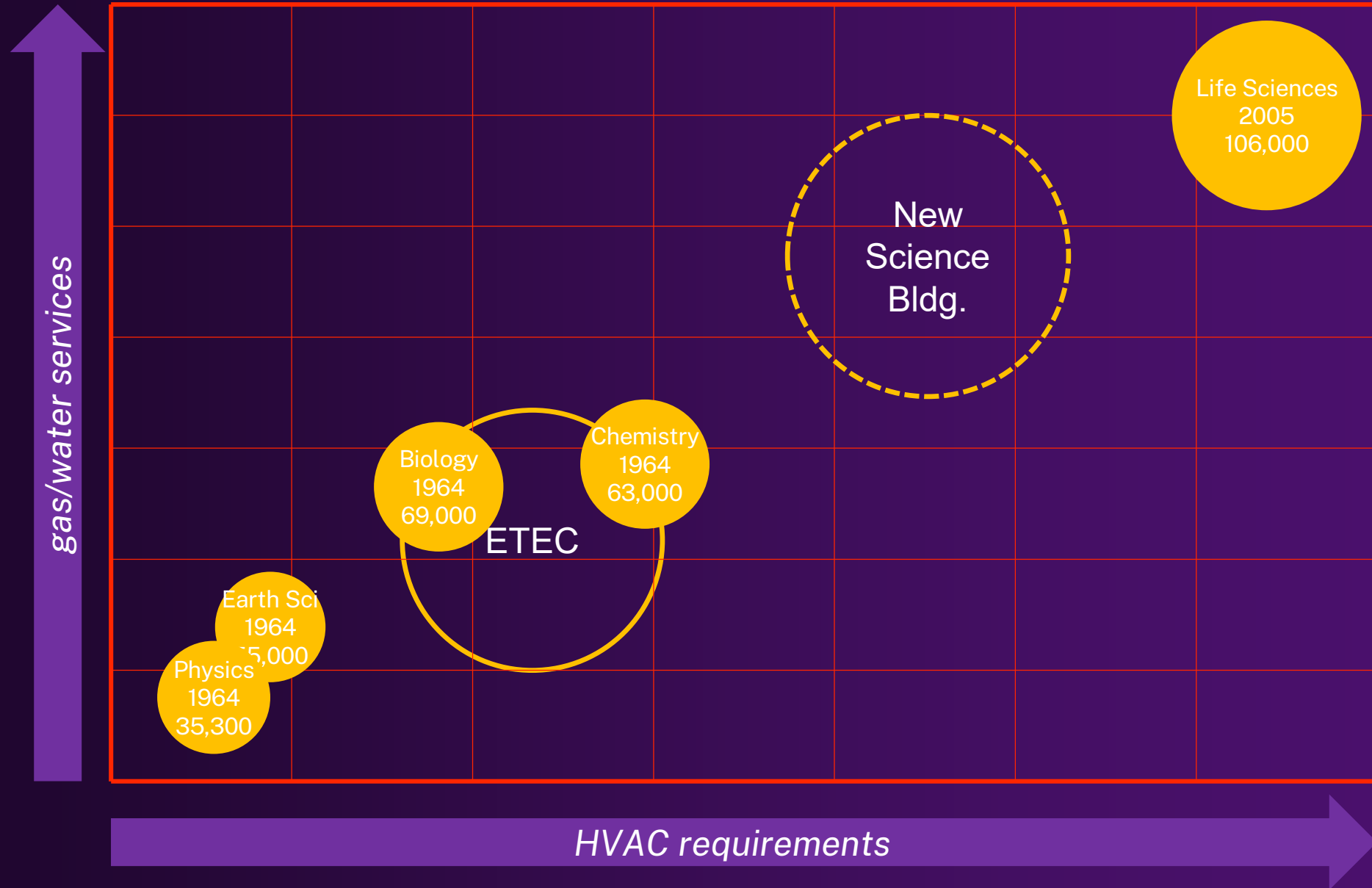


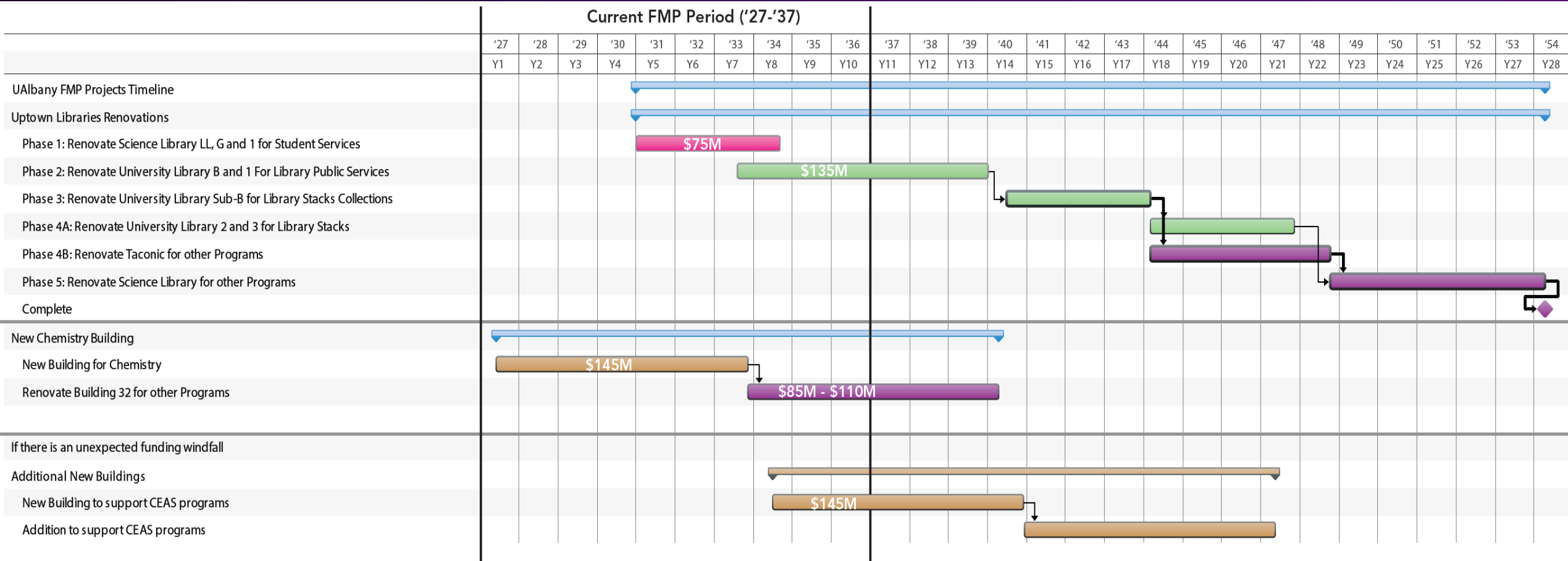
LEGEND	
■	Student Services
■	Library
■	NYS Writers Institute
■	Other Program



New Science Building







LEGEND

- Student Services
- Library
- Other Program
- New Building



Lot's more to address...

Uptown

Renovation

- **Biology**
- **Physics**
- **Humanities**
- **Social Science**
- **Campus Center**
- **Performing Arts Center**
- **Fine Arts**
- **Arts and Sciences**
- **Dutch Parking Lot**

Athletics

- **Air Structure**
- **Baseball/Softball Fields**

NANO - TBD

Downtown

Renovation

- **Hawley**
- **Page**
- **Draper**
- **Milne**
- **Richardson**

Alumni Quad - TBD

Energy

Approved projects from master plan

- **LSRB HVAC Improvements**
- **Chemistry HVAC & Controls**
(may not do if new Chemistry Bldg. proceeds)
- **Academic Podium Bldgs – CAV to VAV**
- **Utility Metering and Integration**
- **LTHW Integration and District Geothermal**



UNIVERSITY AT ALBANY
State University of New York

Questions & Discussion