

Waste Determination Flowchart:

Is Your Waste HAZARDOUS?

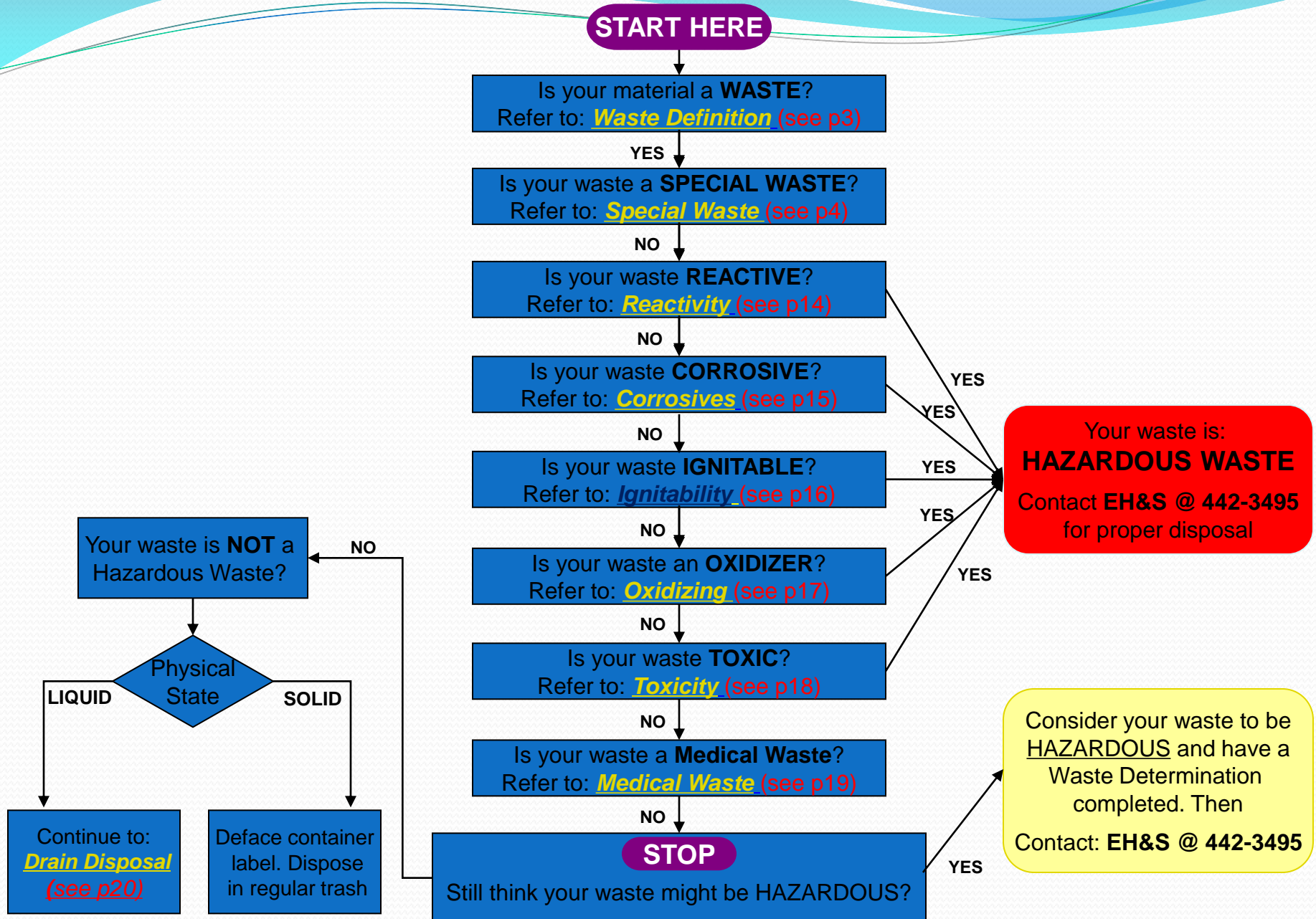


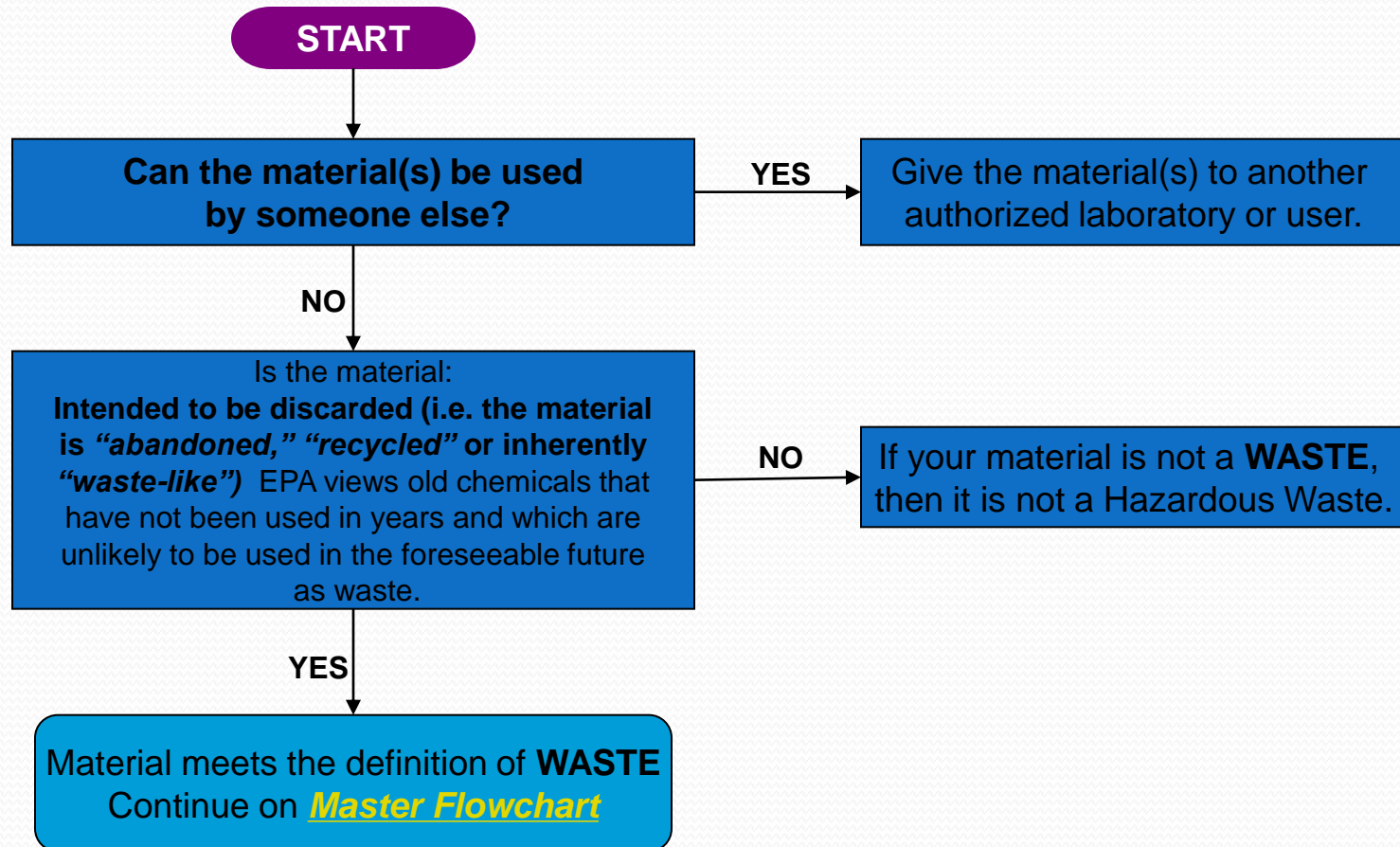
Office of Environmental Health & Safety

(518) 442 - 3495

2010

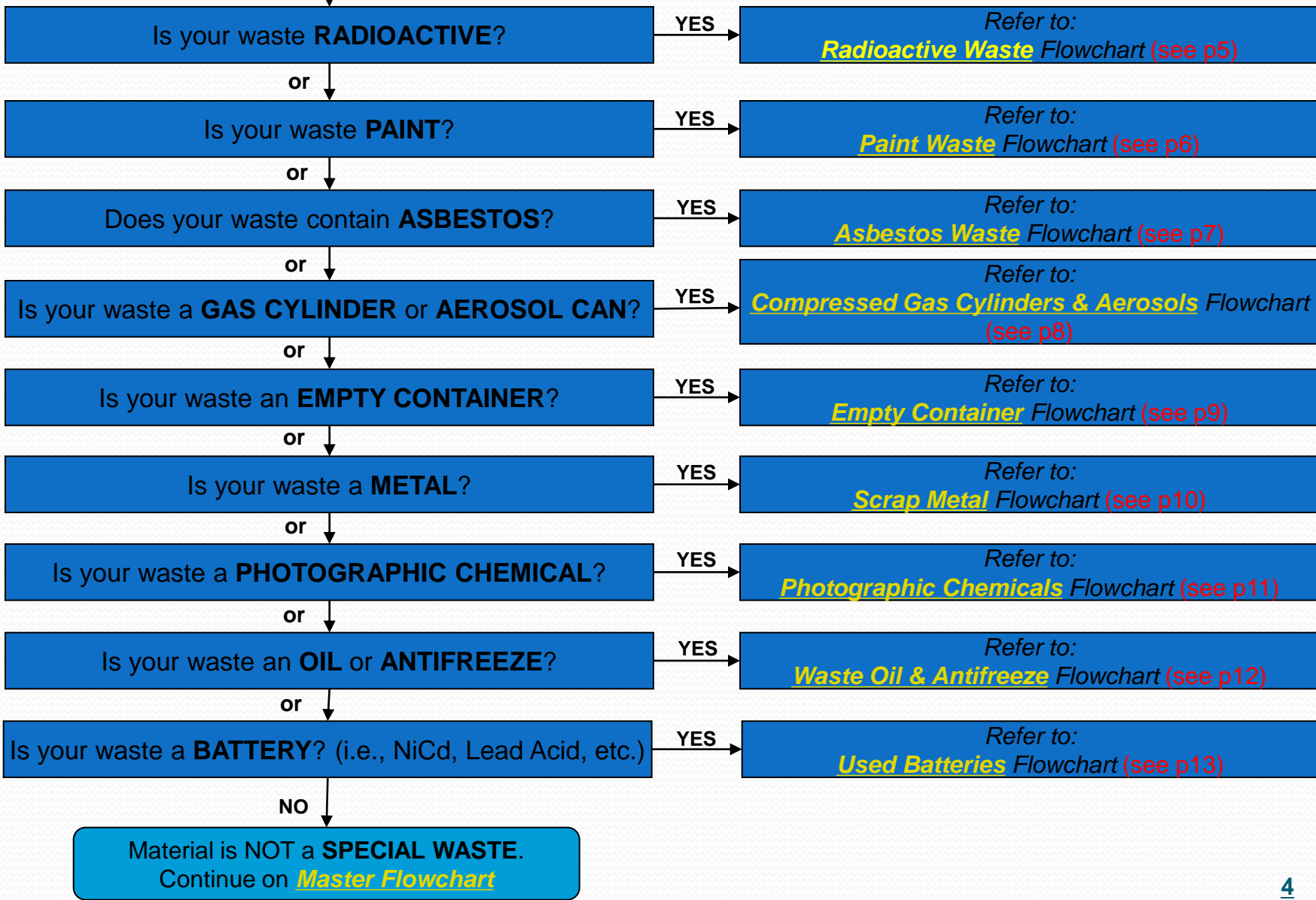
Master Flowchart





Special Waste

START HERE



START HERE

Is this symbol (with or without wording):
**displayed on the
waste or waste
container?**



or

Does the waste contain any:
RADIOACTIVE MATERIAL?
Does the waste contain any isotope of an
element that undergoes nuclear
transformations emitting a form of radiation?

or

Does the waste contain any:
URANIUM or THORIUM COMPOUNDS?
(i.e., uranium dicarbide, uranium dioxide, uranium hexafluoride,
uranium hydride, uranium monocarbide, uranium tetrafluoride,
uranocene, Uranyl acetate, uranyl nitrate or thorium
acetylacetonate, thorium carbide, thorium chloride,
thorium dioxide, thorium disulfide, thorium fluoride,
thorium nitrate, thorium oxalate, thorium sulfate)

or

Is the waste a:
**Self-Illuminated Exit Sign? Smoke Detector?
Electron Capture Detector (ECD) or Static Eliminator?**

NO

Your waste is **NOT a RADIOACTIVE WASTE.**
Continue on **Special Wastes Flowchart.**
If you believe you still have a radioactive waste,
contact **Eric Call @ 442-3495**

YES

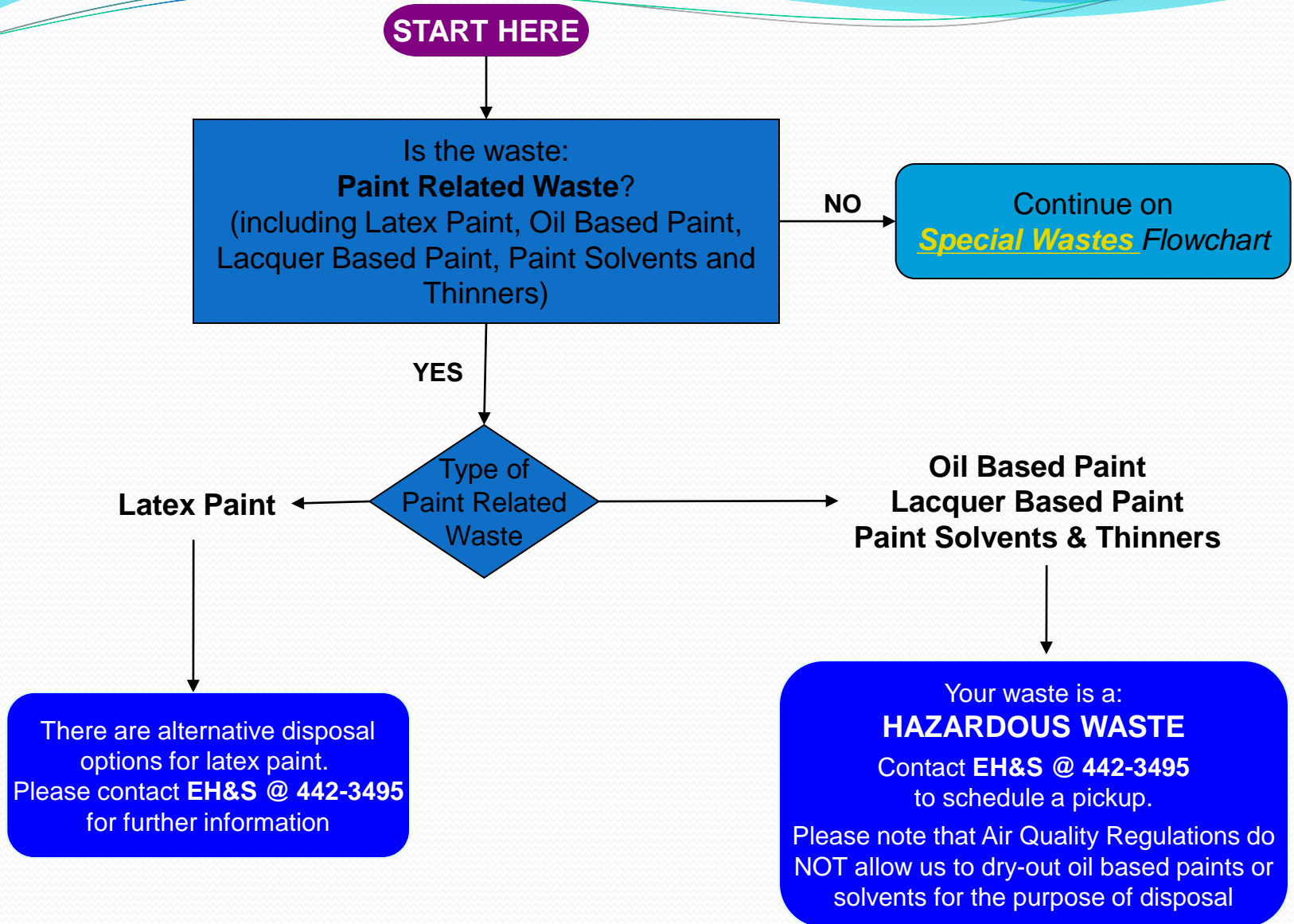
YES

YES

YES

Your waste is a
RADIOACTIVE WASTE.
Contact **Eric Call @ 442-3495**
For further assistance

Your waste **MAY BE** a
RADIOACTIVE WASTE.
Contact **Eric Call @ 442-3495**
For further assistance



START HERE

Does the waste:
Contain > 1% Asbestos?



Examples of Materials Commonly
Containing Asbestos (but not limited to):

- Sheet Rock Taping and Joint Compound
- Fire Door Core Material
- Roofing Felt
- Floor Tile and Mastic
- Transite Sheets (Cementious Panels)
- Sprayed-on Ceiling Materials
- Boiler Insulation
- Pipe Insulation
- Brake Pads
- Clutch Pads
- Gaskets
- Electrical Wire Insulation
- Thermal Insulation on Electrical Appliances

YES

Your waste is a:
HAZARDOUS WASTE

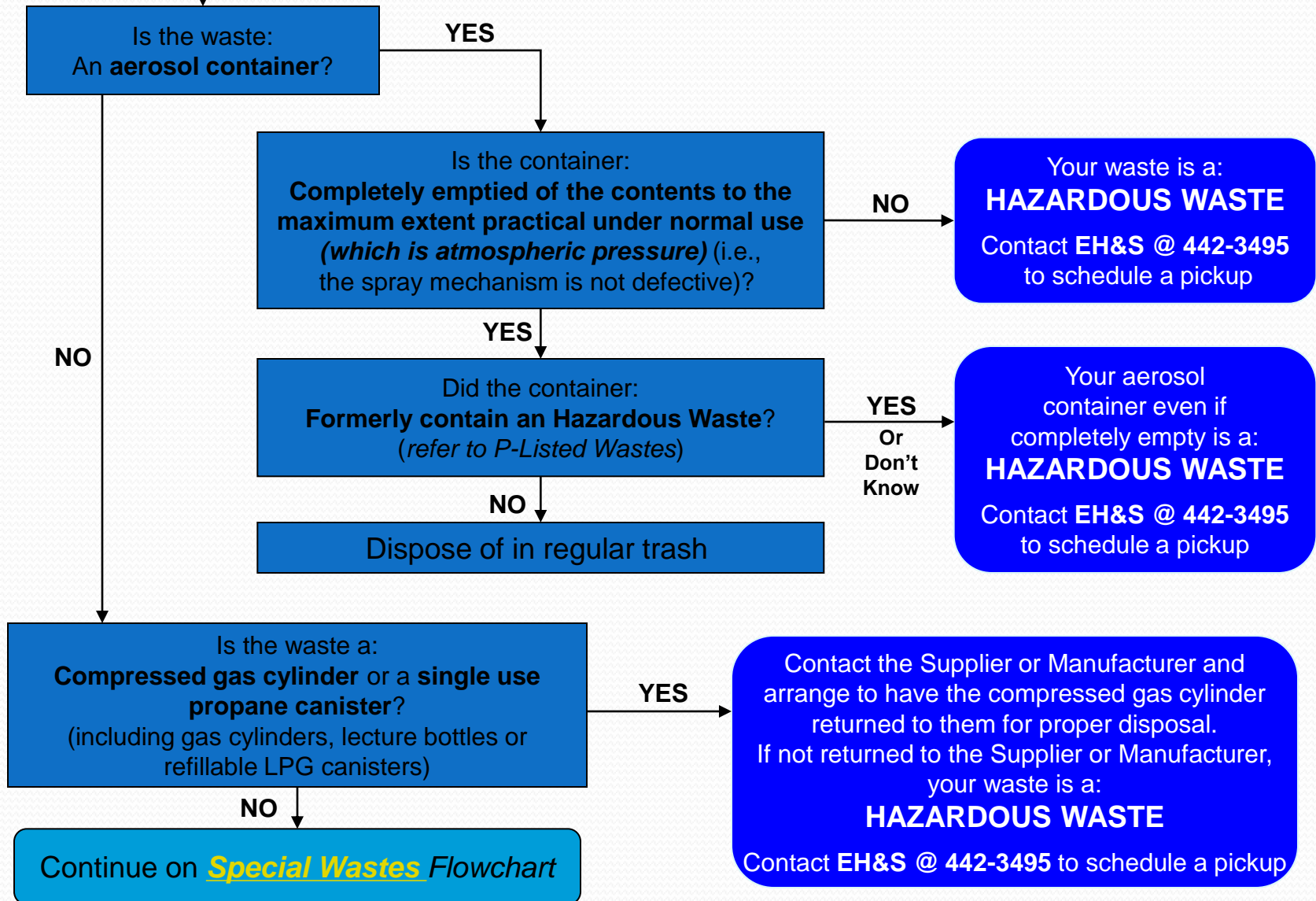
Contact **Nora Baynes @ 442-3495**
for additional details

NO

Continue on ***Special Wastes*** Flowchart

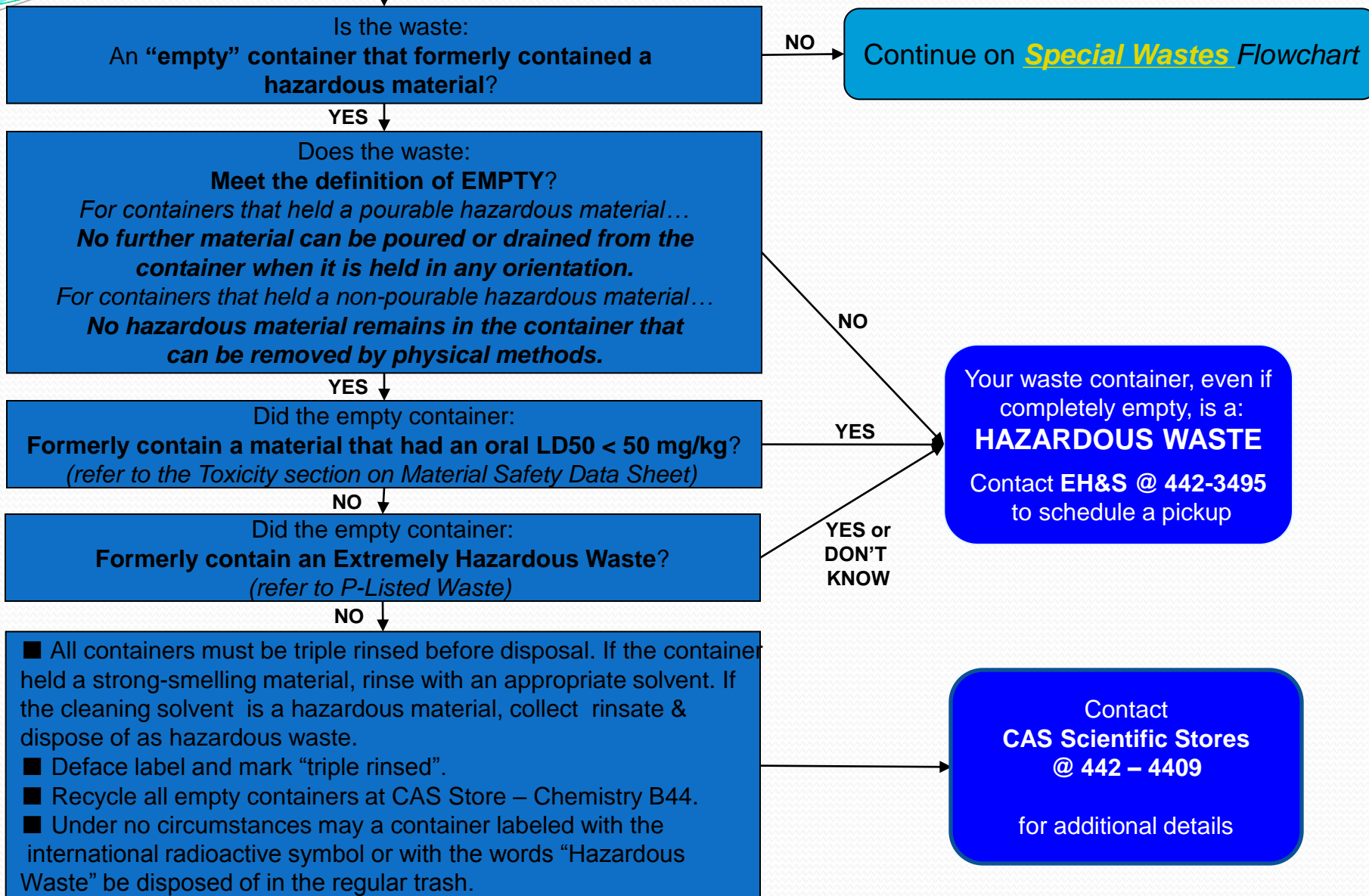
Compressed Gas Cylinders & Aerosols

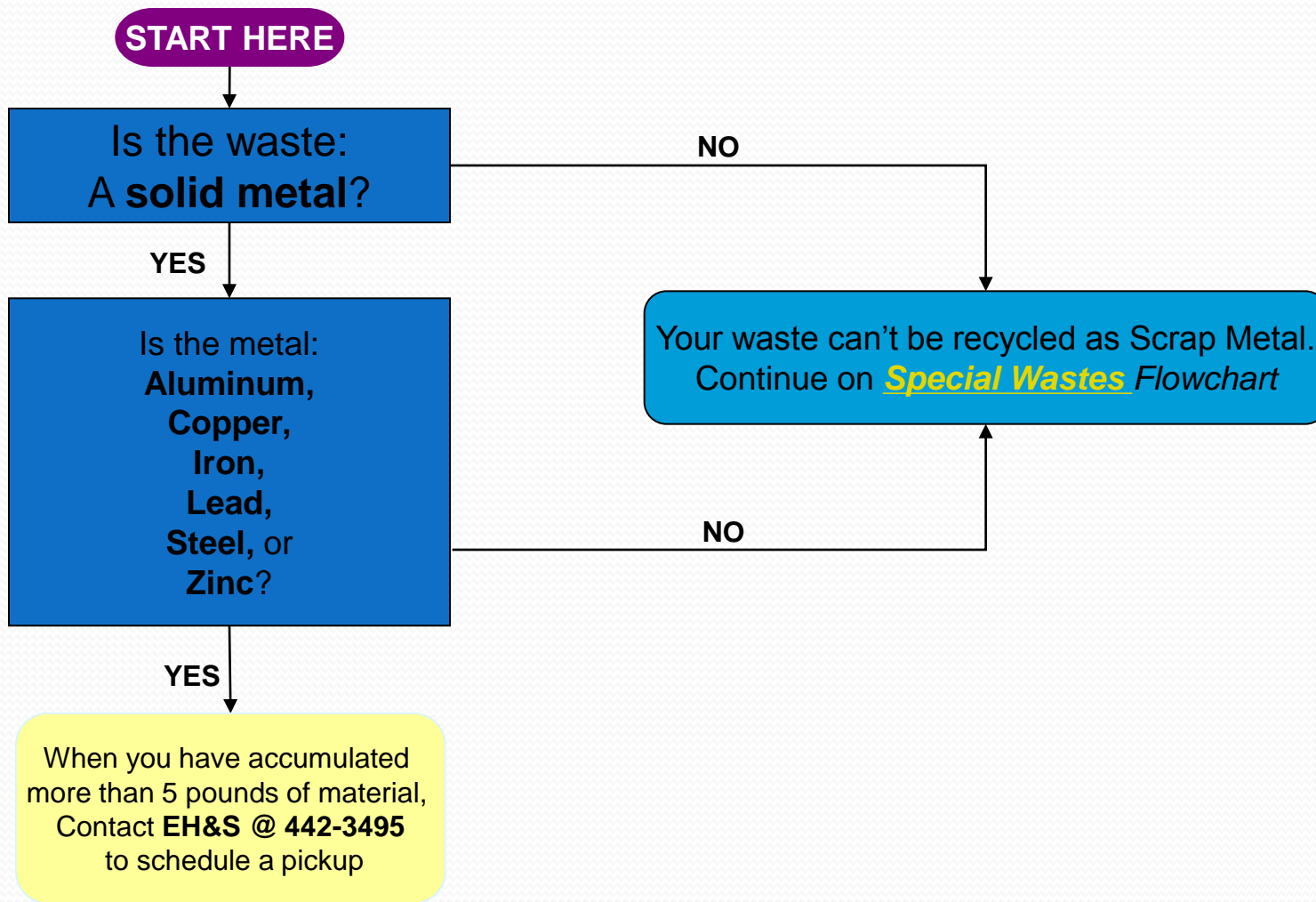
START HERE



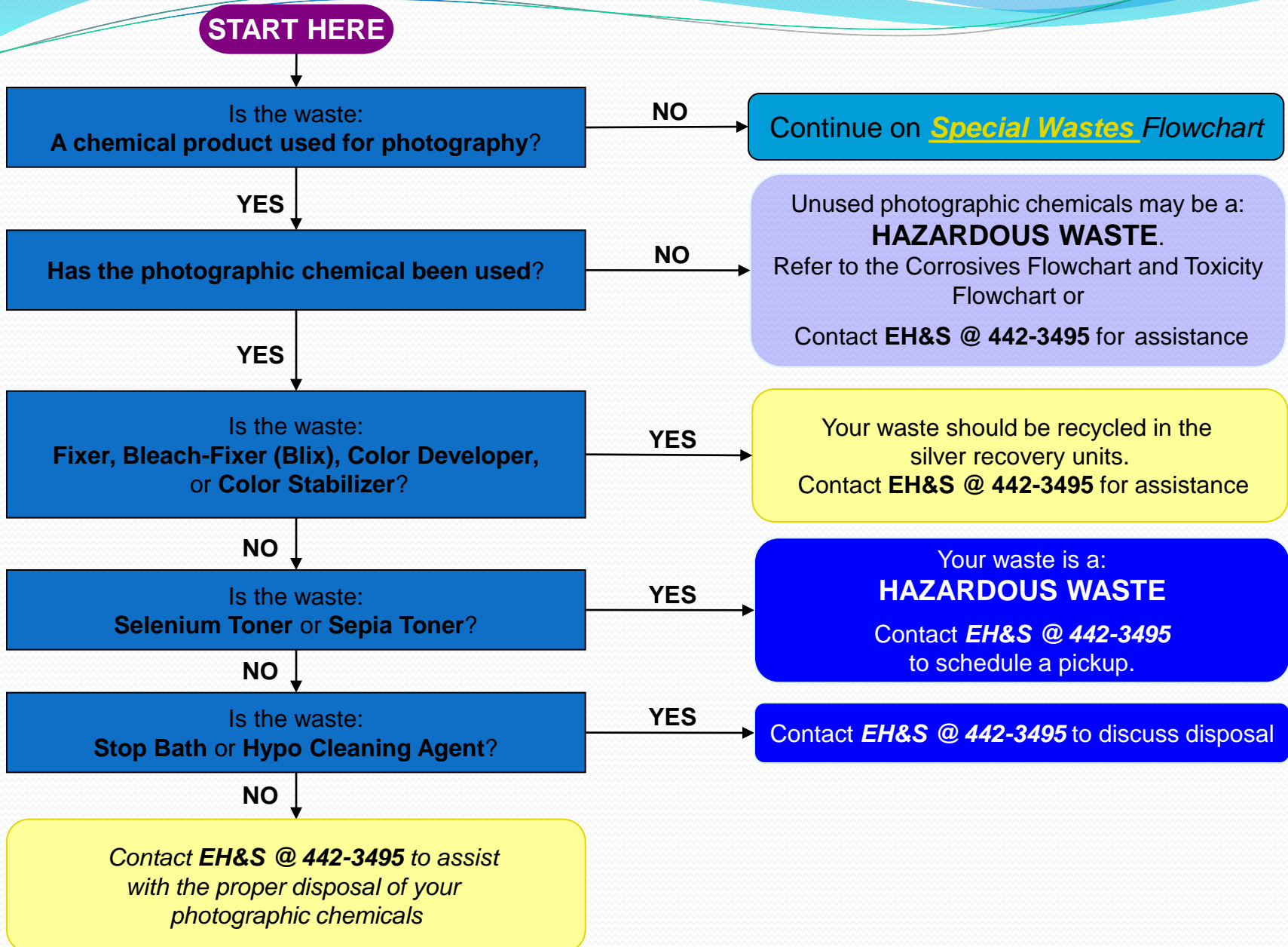
Empty Containers

START HERE





Photographic Chemicals



Waste Oil & Antifreeze

START HERE

Is the waste:
an **Oil** or **Antifreeze**?

YES

Is your waste:

- Motor Oil
 - Automatic Transmission Fluid
 - Power Steering Fluid
 - Diesel Fuel
 - Gear Oil
 - Turbine Engine Oil
 - Hydraulic Oil
 - Fuel Oil
 - Kerosene (#3, #4, & #6)
- Oils can NOT be disposed down the drain
(even if they are not hazardous waste).*

NO

Is your waste?

- Ethylene Glycol based Antifreeze
- Coolant from Chillers / HVAC systems
- Propylene Glycol based Antifreeze (freeze protection > 0° F)

NO

Is your waste?

- Any type of oil contaminated with a hazardous chemical
- Chlorinated Solvents
- Metal working fluids
- Degreasing solvents
- Freon and Freon contaminated refrigeration oil
- Naptha
- Transformer Oil
- Brake Fluid
- Radiator Flush
- Deicers
- Oily Water
- Antifreeze with a freeze protection above 0° F

NO

Continue on [Special Wastes](#) Flowchart

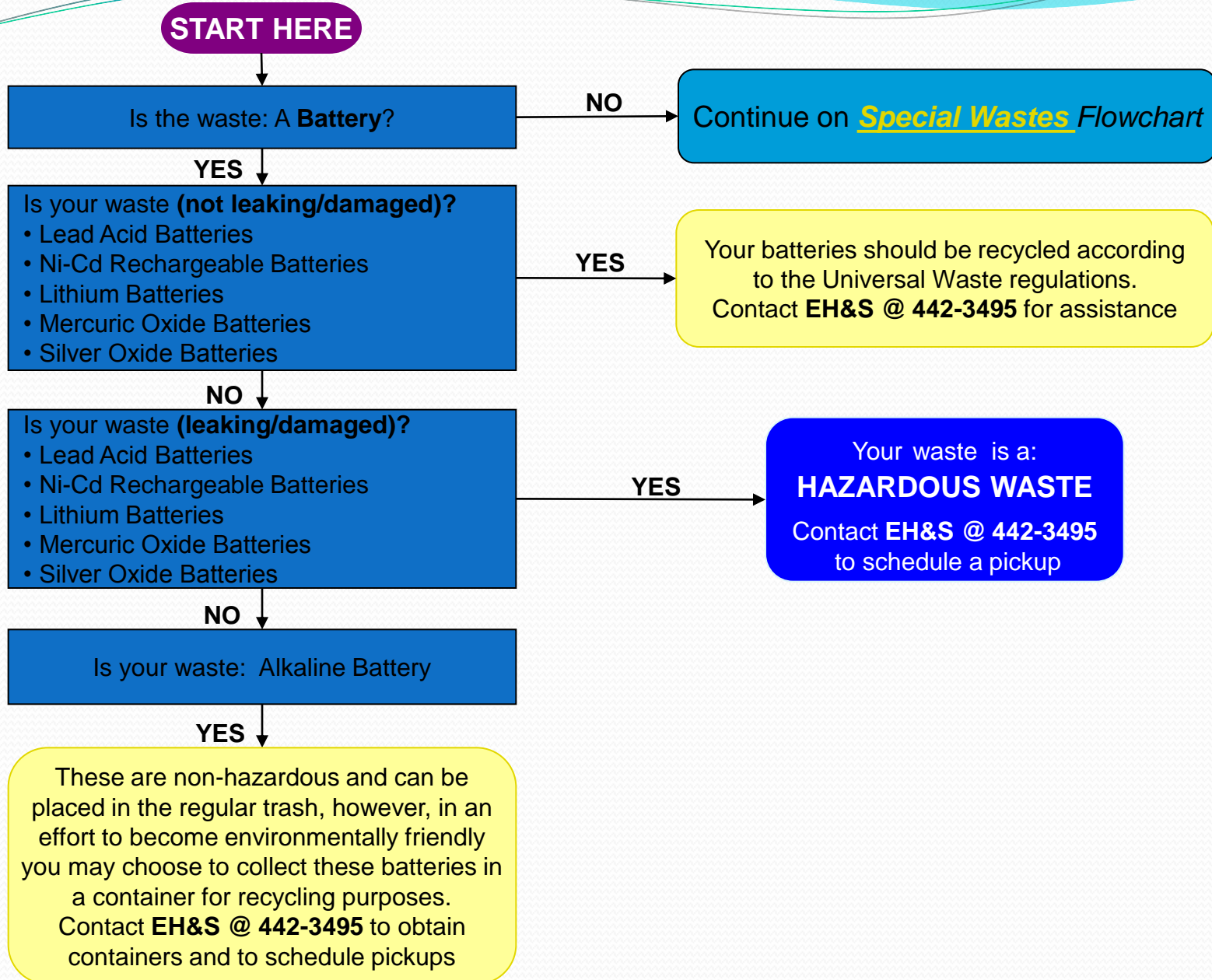
YES

Your waste should be recycled .
Contact **EH&S @ 442-3495** for assistance

YES

YES

Your waste is a:
HAZARDOUS WASTE
Contact **EH&S @ 442-3495**
to schedule a pickup



START HERE

Does the waste:
React violently with water or form potentially explosive mixtures with water?

NO

Does the waste:
Create toxic gases when in contact with water?

NO

Does the waste:
React violently when exposed to air or form potentially explosive mixtures with air?

NO

Does the waste:
Create toxic gases when exposed to air?

NO

Is the waste:
Unstable (readily undergoes violent change with or without detonating or exploding)?

NO

Is the waste:
A potential peroxide former that has either exceeded its open or shelf time limits or is stored in an undated container

NO

Material does NOT meet the definition of **REACTIVE**.
Continue on [Master Flowchart](#)

YES

YES

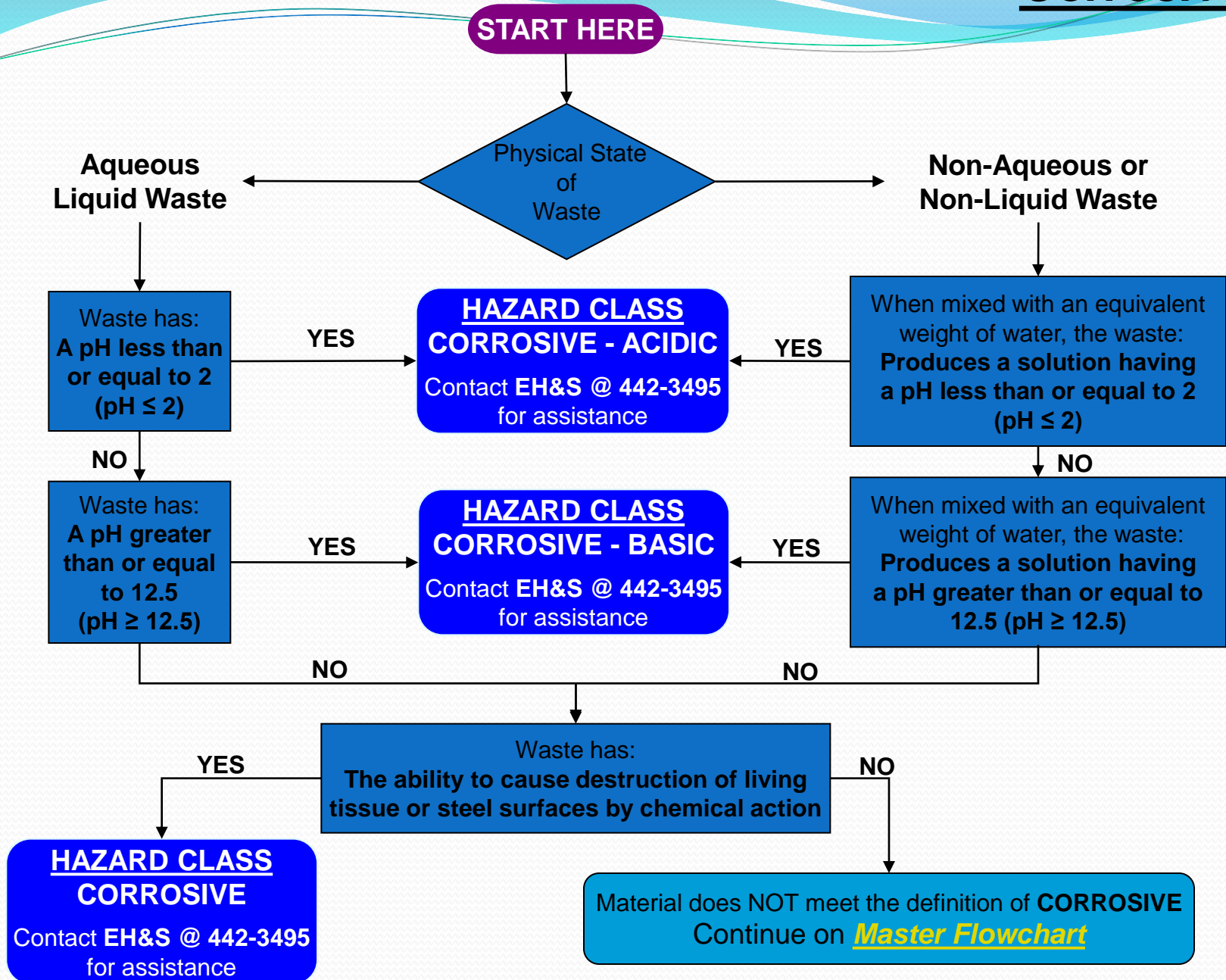
YES

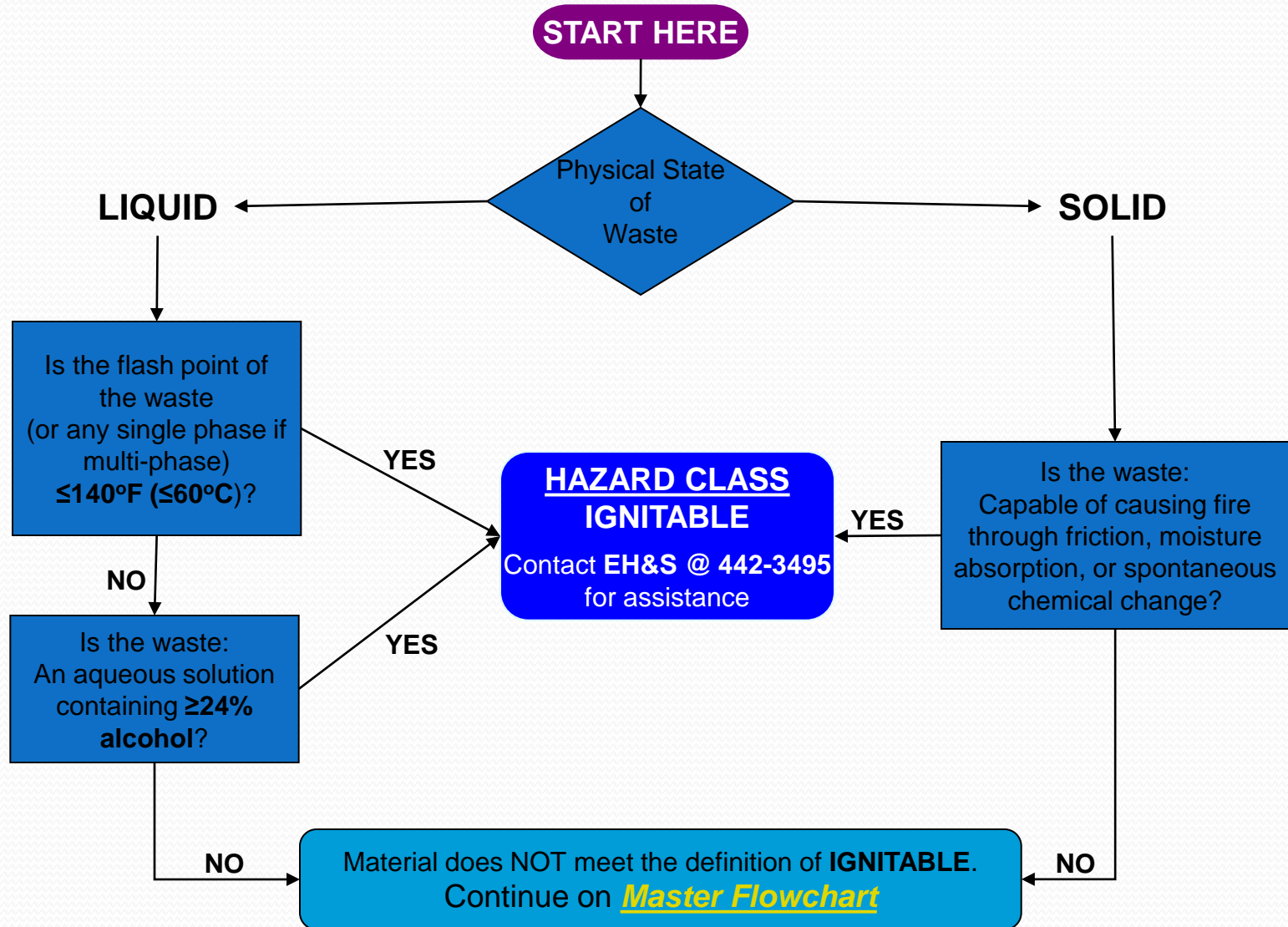
YES

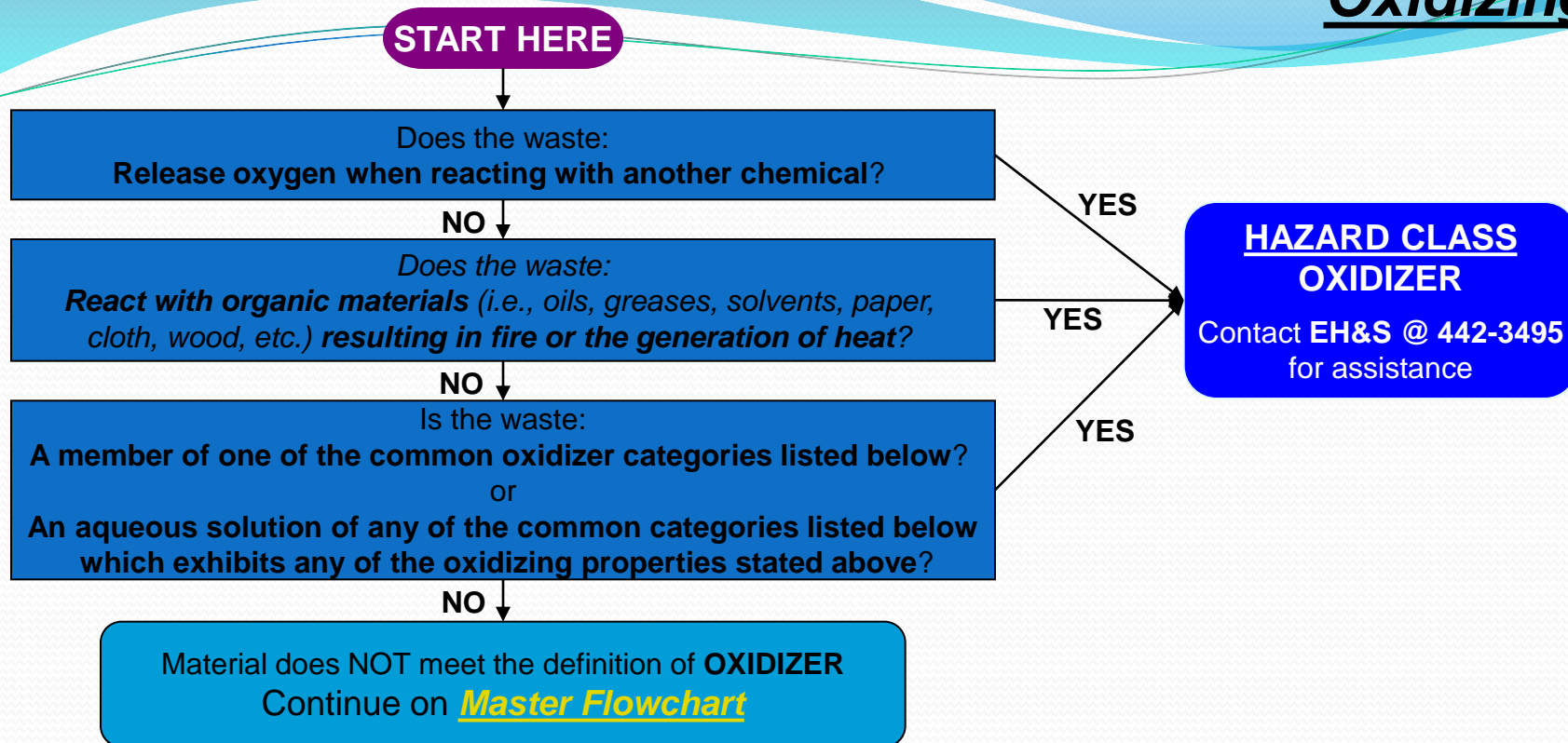
YES

YES

HAZARDOUS CLASS
REACTIVE
Contact EH&S @ 442-3495
for assistance







Examples:

SOLIDS

- | | | | |
|---------------------|-------------------|---------------------|--------------------|
| • Bismuthates | • Dichromates | • Iodates | • Periodic acid |
| • Bromates | • Ferric sulfate | • Iodine | • Permanganates |
| • Chlorates | • Ferric chloride | • Manganese dioxide | • Permanganic acid |
| • Chlorites | • Ferric trioxide | • Nitrates | • Peroxides |
| • Chromates | • Ferricyanides | • Perborates | • Persulfates |
| • Chromium trioxide | • Hypochlorites | • Perchlorates | |



START HERE

- Waste displays the toxicity characteristic if it **exceeds certain concentration levels** using specified test methods.
- The toxicity characteristic leaching procedure (TCLP) is the specified test method for determining if a waste is a toxic hazardous waste.
- The TCLP simulates the conditions in a landfill and then analyzes the concentrations of specifically listed chemicals and heavy metals that could potentially leach into the groundwater.
- Examples of the most common toxic materials, their regulatory limits, and their corresponding waste codes are listed right.

Material does NOT meet the definition of **TOXICITY**.
Continue on [*Master Flowchart*](#)

Toxic Hazardous Waste

| | | |
|---------------------------|----------------|-------------|
| Arsenic | 5.0 ppm | D004 |
| Barium | 100 ppm | D005 |
| Benzene | 0.5 ppm | D018 |
| Cadmium | 1.0 ppm | D006 |
| Chloroform | 6.0 ppm | D022 |
| Chromium | 5.0 ppm | D007 |
| Lead | 5.0 ppm | D008 |
| Mercury | 0.2 ppm | D009 |
| Methyl Ethyl Ketone (MEK) | 200 ppm | D035 |
| Selenium | 1.0 ppm | D010 |
| Silver | 5.0 ppm | D011 |
| Tetrachloroethylene | 0.7 ppm | D039 |
| Trichloroethylene | 0.5 ppm | D040 |
| Vinyl Chloride | 0.2 ppm | D043 |
| Chloroform | 6.0 ppm | D022 |

*NOTE: The 8 compounds that appear in **red** are referred to as the “RCRA 8 metals” and are among the most common toxic wastes generated at the University @ Albany.*



Medical Waste

START HERE

Is the waste:
A fluid blood or blood product?

NO

Is the waste:
A cerebrospinal fluid, synovial fluid, pleural fluid, pericardial fluid, peritoneal fluid, amniotic fluid, saliva in dental procedures, any body fluid visibly contaminated with blood, biological materials in labs (etiologic), unfixed human tissue or organ?

NO

Is the waste:
A culture of an agent infectious to humans?

NO

Is the waste:
Generated from the treatment or immunization of animals or humans?

NO

Is the waste:
Generated by research involving live or attenuated pathogenic organisms?

NO

Is the waste:
Used or unused sharps (i.e. hypodermic needle, scalpel, razor blades, pasteur pipettes), or any glass or plastic) contacted with infectious materials?

NO

Is the waste:
Generated from work involving *recombinant DNA*?

NO

Is the waste:
Blood, tissue samples, organs, cadavers from infected experimental animals?

NO

Is the waste:
Chemotherapy Wastes (Wastes with a trace (<15cc) of chemo-waste or anti-neoplastic agents?

NO

YES

YES

YES

YES

YES

YES

YES

YES

YES

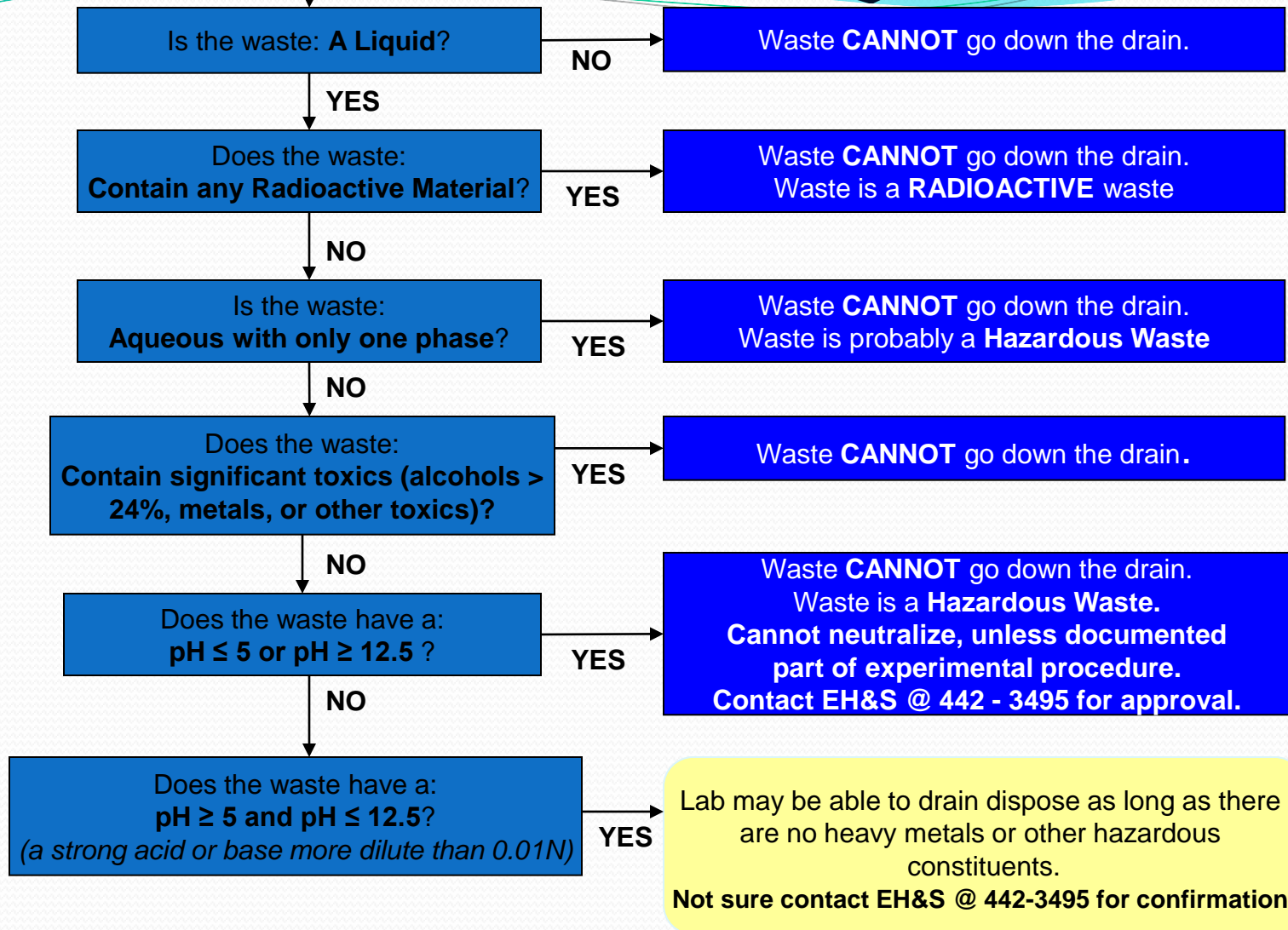
Your Waste is a
Regulated Medical Waste.
Contact YOUR PI
for further assistance.
If additional assistance is required,
contact EH&S @ 442-3495

Your waste is NOT a MEDICAL WASTE.
Continue on **MASTER FLOWCHART**

START HERE



Drain Disposal



Go back to [MASTER FLOWCHART](#)



THANK YOU!

QUESTIONS?

COMMENTS?

CONCERNS?

CALL

**THE OFFICE OF ENVIRONMENTAL
HEALTH AND SAFETY**

@ (518) 442 - 3495