

DUTCH QUAD CORNER PARKING UPDATE

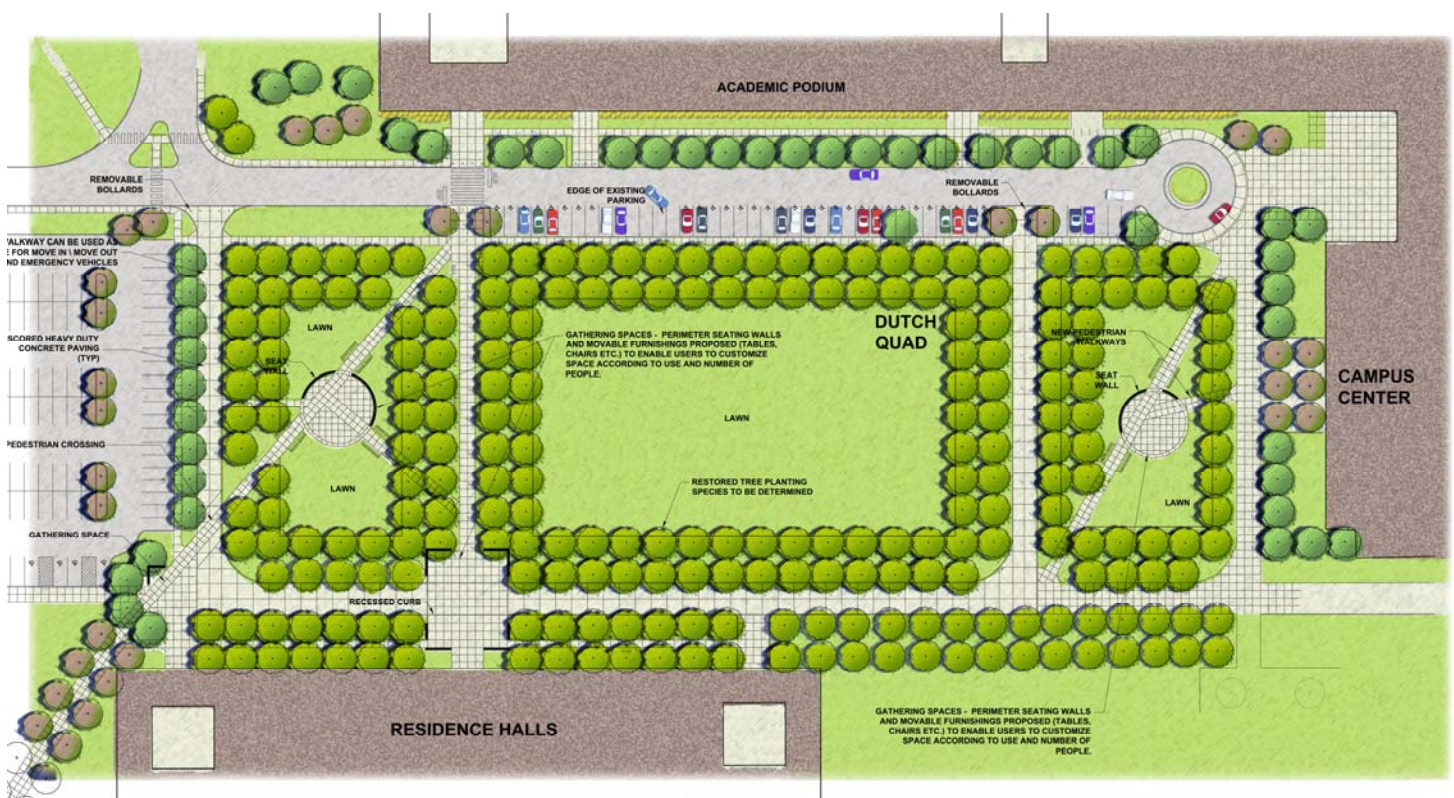
JULY 28, 2009

OFFICE OF FACILITIES MANAGEMENT

www.albany.edu/facilities

This summer, the Dutch Quad Purple (Faculty/Staff) lot is being expanded by 75 spaces as phase one of a multi-year project to significantly upgrade the underground utilities, grounds, and landscaping in the areas between the quads and the Podium. The 75 spaces added to Dutch Quad Purple lot will help offset the spaces that will be permanently removed from this area.

Providing replacement spaces is only one step in this maintenance and upgrade project. Additional phases, currently in design, will move towards the concept in the rendering below. *(The area adjacent to Dutch Quad is shown in the concept rendering below, but the intent is to replicate the concept, in whole or in part, for all Quad-Podium areas).* The concept design is consistent with campus architectural preservation objectives and seeks to maximize pedestrian-only and recreational and green spaces. Where parking remains, it is better located adjacent to the Podium and will be largely dedicated to handicapped spaces. The concept plan, presented to the Landscaping Master Plan Committee and the Advisory Planning, Architecture, and Aesthetics Committee, achieves these other objectives:



- ▶ **INCREASE PEDESTRIAN SAFETY** – The interaction between vehicles and pedestrians will be minimized. The worn-down, intuitive paths will be formally constructed with attractive pavers and significantly improved with lighting, seating, and other amenities.
- ▶ **ADDRESS UNDERGROUND UTILITY UPGRADES** – The vast, hidden underground network of storm water, sewer, and other pipes and systems will be upgraded and repaired while the site is disturbed.
- ▶ **RESTORE GREEN SPACES** – The Landscape Master Plan has surveyed every tree on campus and some 70 percent are ranked deficient or dying, with entire stands of trees in need of imminent replacement. This project will remove and replace trees consistent with a new planting, pathway, and lighting plan.
- ▶ **IMPROVE QUALITY OF LIFE** – A more park-like setting will be created with pedestrian pavers, improved lighting for security, new benches for informal gathering, and new, sustainable landscaping.

Work on later phases of the plan will begin in May 2010 after commencement. In the interim, the map below displays the new parking and road configuration between the period August 2009 through May 2010.

Dutch Quad - Phase 1 as of August, 21 2009

