

SEPT 2008

IMPORTANT DATES

Building Managers meeting – 09/23/08

Annual chiller and cooling shut down – 10/10/08

Plaza Fountain shut down – 10/01/08

All other fountains shut down – 10/27/08

INSIDE:

- The “Mega Mechanical” Dig
- Updates and news on notable projects
- Energy and Greening Initiatives
- “On the Drawing Boards”



Indian Pond Enhancement Starts This Fall

A multi-year, multi-phased project to restore and enhance Indian Pond will begin this fall. The first phase involves dredging the pond to restore and improve campus storm and sanitary water systems.

The pond is actually a critical component of the Uptown campus storm water and field irrigation systems.

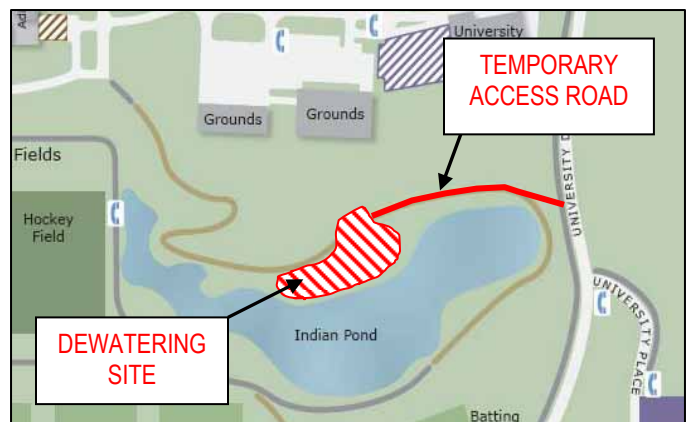
It is engineered to be a sustainable and environmentally sensitive means of collecting storm water run-off from selected campus roads, buildings, parking lots, and other surfaces and help stem outflows to area creeks. Water that remains in the pond is used to irrigate fields. The pond was used in a similar fashion prior to construction of the Uptown campus, when the area was a golf course.

This dredging project is necessary to restore the 6.6 million gallon capacity of the pond. Roughly 12,000 cubic yards of silt and sediment, some as thick as 7 feet, will be removed from the bottom of the pond in a minimally invasive manner.

The process involves a diver whom will guide a screened suctioning tool

that removes the material to a dewatering site adjacent to the pond. The dewatering site is sloped in such a way for water to

This project will require construction of a temporary access road and removal of selected trees and brush to create



run back into the pond, allowing the sediment to dry and be carted off-site for disposal.

The project involves various other erosion control measures and other storm water filtration improvements.

The dredging work is slated to begin in early September and continue through late spring 2009.

the dewatering site, as depicted in the image above. The road will be removed and the area will be replanted and restored when the dredging work is completed.

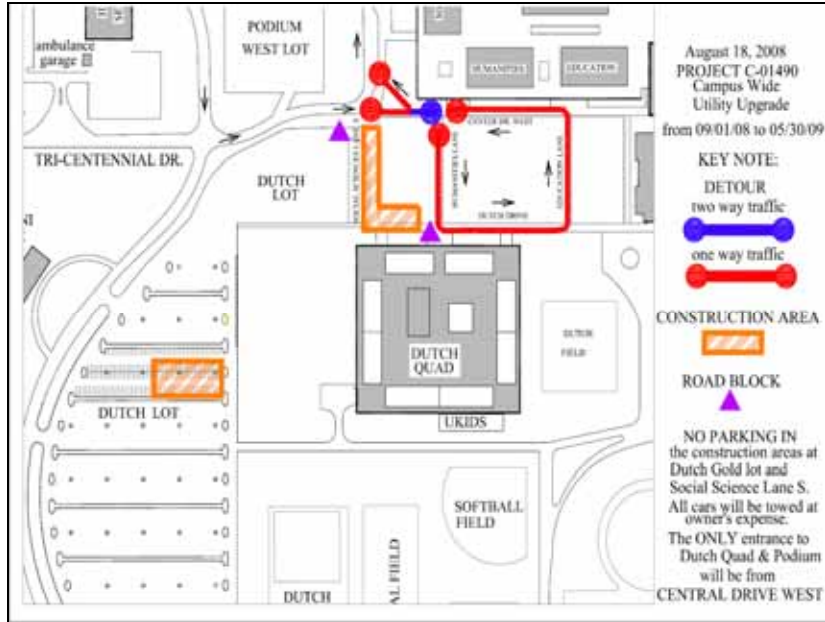
The entire site around the pond is designated for additional beautification and upgrades. The paths will be enhanced and better linked to the new leg of the Purple Path.



Did you know?
The height of the water jets in the new Grand Entry Plaza Fountain is determined by the speed of the wind.

2008-09 Parking and Traffic Disruption: the “Mega Mechanical” Dig

Portions of Dutch Quad Gold parking lot and portions of the parking areas between Ten Eyck and the Podium will be unavailable through May 2009 to allow digging, staging, and installation of new chiller piping from the Central Plant to the Podium. The map below details the work areas and new traffic flows.



The “Mega Mechanical” project is designed to transform the central heating and cooling plant on the Uptown campus, increasing capacity, improving efficiency, and retrofitting equipment for cleaner burning fuels and lower emissions. The \$13 million job started in spring 2008 and will involve various carefully planned stages of work through summer 2010. Work includes:

- ▶ **INCREASING CAPACITY** – This fall and winter existing chiller piping from the central plant to the podium will be upsized by 33%, providing greater cooling for current and future campus growth. In addition, the entire electrical infrastructure of the central plant will be replaced, improving capacity and providing safety and efficiency upgrades.
- ▶ **INCREASING EFFICIENCY** – This winter, three new higher efficiency chillers will be installed to help reduce campus energy use; and next summer (2009), all new electronic controls are being installed to maximize boiler efficiency. The new equipment is expected to reduce energy costs by well over \$200,000 per year.
- ▶ **CLEANER BURNING FUELS** – Next summer (2009), new burners will be installed on campus boilers to accept use of very low-sulfur fuels. Use of no. 6 oil, a “dirtier” fuel, has already ended.

ENERGY UPDATE

With the hiring of **Indumathi Lnu (“Indu”)**, our new Energy Officer, the Facilities team is developing a thorough phase one action plan to further expand energy conservation, efficiency and use of renewable energy technology. Current and past projects and efforts have embraced these objectives, but, in conjunction with the Environmental Sustainability Task Force, this action plan will take a more comprehensive approach. The plan is currently being developed, but will likely include: an energy savings campaign for academic departments (similar to that implemented in the res halls); more lighting upgrades and controls; implementation of space temperature setpoints and setbacks; expanded HVAC system upgrades, controls improvements, and schedule implementation; potential install of window films; and expanded efforts at water conservation.

To help focus and prioritize the work, Indu has been conducting site audits and performing energy modeling of campus buildings.



We plan on undertaking a broader awareness effort, but if your office or department would like to meet Indu and discuss University-wide or office-specific ways to improve energy efficiency, please contact us at 442-3416.



Empire Commons Road Project Improves Safety

Road improvements were completed this summer near the Empire Commons pedestrian crossing area to provide safety features for pedestrians. New technology was designed into the project that includes the use of buried flashing warning lights in the road. The lights are activated anytime a pedestrian walks between the white bollards on each of the corners of the road intersection. The flashing lights can be seen by approaching motorists to warn of crossing pedestrians. In addition, curbed islands in the center of the road were constructed as a means to “calm” or slow traffic through the area; and the intersection itself was realigned and reconfigured to more safely direct automobiles in and out of the various turn-offs in the area.





News and Updates on Selected Projects

Please note that a brief overview of all notable projects is provided on our website

ENTRY PLAZA AND FOUNTAIN

The Grand Entry Plaza is largely completed and the new fountain is operational. In late September, certain mechanical and electrical components of the fountain will need to be corrected, so the fountain will be taken off-line until the spring.

PODIUM STAIRS RENOVATIONS, PH 2

Work has begun to upgrade and repair the stairwells on the north corners of the Podium. These areas are closed for access; and jackhammering and other loud work has been scheduled for the post-midnight shift. The entire project should be completed in the winter.

TUSCARORA&DINING RENOVATION

The Indian Quad dining hall and adjacent residence hall (Tuscarora) are currently being renovated to become state-of-the art spaces. The

demo/abatement stage is completed. Work will continue through early summer 2009.

LECTURE CENTER 3 RENOVATION

LC 3 is being planned as a prototype instructional space for campus wide use. The renovation will incorporate seating, furniture, and technology that will be guided by a Classrooms Committee led by the Registrar. Work is in the design stage with construction in summer 2009.

NEW BUSINESS SCHOOL BUILDING

Design for this new building, to be located across the new Plaza from University Hall, will begin in early 2009.

DATA CENTER RELOCATION

The 2008-09 Capital Plan provided funding to begin design on the relocation of the University's primary

data center. The design will kick off in late 2008 and will seek to provide the type of customized facility – in a new location – that can accommodate the space and facilities needs (cooling, power, access, security, etc.) of emerging computing technology.

HUSTED HALL REHAB

This project, the largest of the 2004 Capital Plan, will transform Husted into the centralized downtown classroom facility. The project is scheduled for completion in late summer/early fall 2009.

LACROSSE SEATING

Permanent bleacher seating for 2,000 fans and a press box at John Fallon field are under construction. The steel work is partially completed awaiting the decking and seating materials. The project is slated for late fall 2008 completion.



Miles Zero Emissions Vehicle

Green Operations

ELECTRIC VEHICLES

This summer, the Facilities Office purchased 2 new electric service vehicles and a Segway personal transporter and retired 10 gas/diesel vehicles in its fleet. Some of the retired gas trucks had gas mileage of less than 8 MPG. The move to these alternative vehicles is consistent with various Executive Orders, SUNY directives, and the campus' ongoing efforts to operate on a more sustainable basis. The 2 electric service vehicles (photo of Miles vehicle at left) are powered by batteries and are capable of going about 40+ miles between being recharged. The Facilities operating budget will yield a net annual savings of over \$20,000; and the amount of CO2 released into the atmosphere will be reduced by a net 50+ tons, the equivalent of planting over 6,000 trees.

REDUCING PAPER WASTE

Paper towels will be removed from selected high volume wash rooms in an effort to reduce the use of paper and the amount of trash collected and disposed of on campus. Sixty (60) *Green Seal* certified high speed electric hand dryers will be installed in their place. Locations for the swap-out are the SEFCU Arena, the Library, the Campus Center, and the Lecture Center. These hand dryers are the latest technology and will provide a net savings to the campus of over \$13,000 per year. The installation is planned prior to January 2009.



ELEVATOR UPDATE

The University is continuing its multi-year effort to renovate and upgrade each of its 62 elevators. Work began this summer on a project to renovate another 8 original elevators, focusing on the Campus Center, Library, Performing Arts Center (PAC), and Biology. The PAC (freight) and Library (south) elevators are currently off-line and are scheduled for completion in mid-Dec. and early-Oct. respectively. PAC (north) and Campus Center (west) are scheduled to start renovation work in early- and mid-Oct., respectively, for Dec. return to service. PAC (south) and Library (north) elevators are scheduled for renovation in mid- and late-Dec., with completion in Feb.



09/2008
Planning
Update

The Campus Planning Unit in Facilities is working with various committees and groups on campus on the following planning projects:

- ▶ **SITE PLANNING AND CONCEPT STUDY – MULTI-USE ATHLETIC FACILITY**...study underway; preferred site and size selected; planned report to be completed September 2008...
- ▶ **CAMPUS CENTER EXPANSION AND PROGRAM STUDY**...the precursor to design and construction, this study will determine the future occupants and services in a larger campus center and where/how it will be constructed; study kick-off is anticipated in September 2008...
- ▶ **UPTOWN CAMPUS GENERIC ENVIRONMENTAL IMPACT STUDY**...this study, consistent with SEQRA requirements, will aggregate all relevant planned construction and site improvements into a larger environmental review process; work is underway right now...
- ▶ **RESIDENCE HALL NEEDS AND SITE STUDY**...study underway; preferred site and size selected; planned report to be completed October 2008...
- ▶ **GETTY GRANT**...study underway; will inform campus on how to preserve and enhance unique architecture and style of Uptown campus; report completion expected summer 2009

**OFFICE OF FACILITIES
MANAGEMENT**

Kathryn K. Lowery
VP, Division of Finance and
Business

John Giarrusso
AVP, Facilities Management
956-8090

For facilities work order help, trouble
calls, and general info, please call the

**CUSTOMER SERVICE
CENTER**

442-3480



On the Drawing Boards...

■ **Uptown Podium Renovation Concept Plan**

Concept study underway to lay out a 20 year plan to renovate and renew the entire Podium – this plan could guide future space planning and capital funding strategies

■ **Podium skydome installation**

Design and planning underway to install “skydomes” over selected openings on the Podium (similar to those over PAC and Library) – these will protect Podium from weather erosion and assist maintenance/upkeep costs of rain, ice, and snow

■ **Window/light well replacement and upgrades**

These “light wells” are located on the ground floor areas between buildings. They are glassed-in, but are aging and deteriorating (example: the light well between Education and Humanities). These areas will be “roofed” with some type of skylight and the space underneath reclaimed for indoor lounge and gathering places.

■ **Page Hall renovation**

The next downtown building for renovation is Page Hall. Programming and design work is expected to kick-off in 2009.

Guidance for Planning and Architecture

When planned construction or upgrades will have a material impact on the use of spaces and/or land at the University, the Facilities Office seeks guidance and input from any number of committees and governance bodies. The need for input is even more acute given the unique design and formal layout of the Uptown campus. With major construction planned in the coming years (Business School Building, Campus Center expansion, data center relocation, etc.), the most notable of these guidance/input committees is the **Advisory Planning, Architecture, and Aesthetics Committee (APAAC)**. This group is comprised of various Vice Presidents, the Chair of the Faculty Senate, faculty, other staff, and students. The APAAC is charged with reviewing and commenting on land use planning, generalized architectural/planning principles, and aesthetics considerations for individual projects. *More information about APAAC can be found on the Facilities website.*

Facilities Staffing News

Indumathi Lnu (“Indu”) was hired as the Energy Officer in early July 2008. Indu has a strong energy background, most recently coming from Johnson Controls, working with private and public entities to promote and achieve energy efficiency.

Robert Prendergast joined the Campus Planning Unit as a senior planner in February 2008. Among other things, Bob is leading the planning efforts for the data center, Page Hall, and stadium projects.

Jay Baumstein joined the Architecture, Engineering, and Construction Management (AECM) Unit in August 2008. He will be assigned to be a construction manager under the new capital plan.

Mark Hahn, P.E., joined the Architecture, Engineering, and Construction Management (AECM) Unit in September 2008. He will be assigned to be a project manager under the new capital plan.

It's not too early...

to start thinking about snow!
The Facilities Office has ordered over 600 tons of rock salt and is working on revising the snow removal plan.

