

***Body Maps: Works from the University at Albany
Fine Art Collections in Conversation with
Past Exhibiting Artists***

January 22 – April 3, 2024

2nd Floor Main Gallery & Nancy Hyatt Liddle Gallery

Barrow Parke: Systems & Mythologies

1st Floor Main Gallery



ALBANY, NY (January 5, 2024) – The University Art Museum (UAM) presents two exhibitions *Body Maps: Works from the University at Albany Fine Art Collections in Conversation with Past Exhibiting Artists* and *Barrow Parke: Systems & Mythologies*.

Navigating personal geographies and histories, the artists in ***Body Maps*** explore the relationship between the body and the self in video, photography, painting, printmaking, and sculpture. Past exhibiting artists on view include Keltie Ferris, Kate Gilmore, Gracelee Lawrence, Pope.L, Ronny Quevedo, Sara Greenberger Rafferty, Carrie Schneider, and Rirkrit Tiravanija, presented alongside nine artists from the University at Albany Fine Art Collections including Marisol and Robert Rauschenberg.

Working at the intersection of art, craft, and technology, artists Mark Barrow and Sarah Parke explore visual systems in ***Barrow Parke: Systems & Mythologies*** through their collaborative weaving and painting practice. This exhibition is continuing from fall 2023. The UAM is also pleased to announce the release of an exhibition catalogue in March.

Body Maps: Works from the University at Albany Fine Art Collections in Conversation with Past Exhibiting Artists

The artists in *Body Maps* explore the relationship between the body and the self. As they navigate personal geographies and histories, their bodies act as stand-ins for larger cultural experiences. The surfaces they explore—the picture plane, maps, skin, walls, floors, city streets—always contain multitudinous depths revealed through traces of their actions. These actions include navigating real spaces in performances and feats of physical endurance documented through video or photographs, mapping the flat terrain of prints or paintings, or translating bodily surfaces into 3D-printed forms.

The artist's own body is frequently the subject of the work, often presented as fragments or traces whose unexpected combinations generate new meanings. And the artist's body is in many cases also a medium and material, the very thing the artists manipulate and explore. This intimate connection between the artist and their body is often reinforced by the work's setting, often in the private space of the artist's studio.

Part of the University Art Museum's mission is to create a space for new ideas to emerge by placing its Collections in dialogue with contemporary artists, particularly those who have had a hand in shaping our museum's history through their past exhibitions. Recontextualized in this exhibition, the work of these artists continues to offer new ways of thinking about the way our bodies navigate the physical and conceptual spaces of the museum and our world.

Past exhibiting artists on view:

Keltie Ferris
Kate Gilmore
Gracelee Lawrence
Pope.L
Ronny Quevedo
Sara Greenberger Rafferty
Carrie Schneider
Rirkrit Tiravanija

Artists from the Collections on view:

Vito Acconci
Andreas Feininger
Richard Garrison
Daesha Devón Harris
Allan Kaprow
Marisol
Robert Morris
Robert Rauschenberg
Andy Warhol

The artists' past exhibitions include:

[*Ronny Quevedo: offside*](#) (2022)

[*Fruit Soup: Contemporary Vanitas by Audrey Flack and Gracelee Lawrence*](#) (2022)

[*Carrie Schneider: Rapt*](#) (2019)

[*ACE: art on sports, promise, and selfhood*](#) (group exhibition including Ronny Quevedo) (2019)



[Sara Greenberger Rafferty: Gloves Off](#) (2017)
[Keltie Ferris: Body Prints and Paintings](#) (2016)
[Kate Gilmore: A Tisket, A Tasket](#) (2013)
[Day After Day: The Diaristic Impulse](#) (group exhibition including Rirkrit Tiravanija) (2013)
[Five Ways to Say the Same Sadness: New Work by William Pope.L](#) (2004)

Barrow Parke: Systems & Mythologies

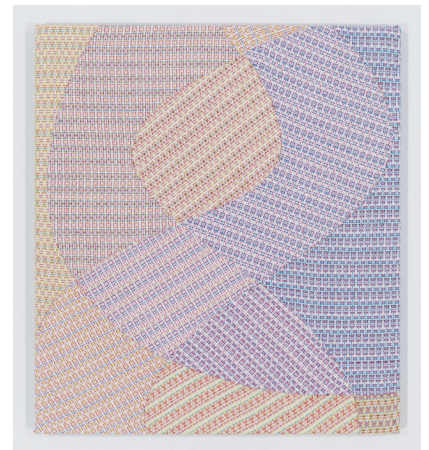
For artist duo Mark Barrow and Sarah Parke, weaving is a way of thinking. The subject matter of their collaborative art practice combining handloomed textiles and painting covers topics from world creation myths to computer science to the cosmos, but their work always centers on the craft of weaving: its history, logic, mathematics, and systems, and its intuitive, visual, and tactile qualities. *Barrow Parke: Systems & Mythologies* is Barrow Parke's first solo museum exhibition and features newly commissioned work, including site-specific wallpaper and vinyl window installations, alongside earlier series showing the arc of their fifteen-year collaboration.

Barrow Parke's most recent work shows how weaving provides a framework for thinking about systems, such as those in the sciences or anthropology. Through woven and painted patterns, Barrow Parke frequently explore the patterns of thinking that form mythological and scientific systems for understanding the cosmos. Barrow Parke's earlier series explore abstract visual systems drawn from screen technology, commercial printing, and modernist painting. The exhibition includes a newly commissioned piece covering an entire arched bay of four floor-to-ceiling double windows of the museum's Edward Durell Stone architecture: a luminous translation of graph paper weaving drafts into a grid of translucent red, green, blue, and black vinyl squares that read like digitally-inflected stained glass.

Barrow Parke: Systems and Mythologies also includes works from the University at Albany Fine Art Collections and works on loan by modernist and late modernist artists: Anni Albers, Josef Albers, Ellsworth Kelly, and Agnes Martin. All were selected by Barrow Parke to underscore their dialogue with modernism, which in turn informs all the ways they use weaving to think about the world in *Systems & Mythologies*.

Catalogue

A fully illustrated, color catalogue of *Barrow Parke: Systems & Mythologies* will be released in March. It includes two scholarly essays by UAM associate curator Robert R. Shane and art critic and professor Dr. Zoe Stillpass contextualizing Barrow Parke's work.



About the artists

Mark Barrow (b. 1982) and Sarah Parke (b. 1981) live and work in New York City. Barrow holds a B.F.A. in Painting from the Rhode Island School of Design and an M.F.A. in Painting from the Yale School of Art. Parke holds a B.F.A. in Textiles from the Rhode Island School of Design. They have exhibited widely in institutions including the Shirley Fiterman Art Center, City University of New York, NY; The Fabric Workshop and Museum, Philadelphia, PA; The Rose Art Museum, Brandeis University, Waltham, Massachusetts; the Power Station of Art, Shanghai, China; Kunsthalle Bielefeld, Germany; and Musée d'art Moderne de la Ville de Paris, France.

Barrow Parke: *Systems & Mythologies* and the forthcoming exhibition catalogue are supported by *The Coby Foundation, Ltd.*



Additional support for exhibitions and programs provided by the Office of the President, Office of the Provost, The University at Albany Foundation, the University at Albany Alumni Association, the University Auxiliary Services at Albany, and the Robin Kanson Lewis '70 Exhibition Endowment Fund.

ALSO ON VIEW

Introphantasm

January 22 – April 3, 2024

Collections Study Space – open Tuesday/Thursday, 11am-2pm

Curated by Bella Burnett, M.F.A. '24

An introspective look at the relationships between personal and cultural memory and history and how those relationships can play a role in one's daily consciousness.

VISITOR INFORMATION

Museum hours January 22 – April 3, 2024

Monday – Friday, 11am – 4pm

Open Saturday, March 9, 11am – 4pm

Closed: 2/19

For additional programming announcements, please visit our website

www.albany.edu/museum or call (518) 442-4035.

Contact: Christine Snyder, Office and Operations Manager,
cbatson@albany.edu

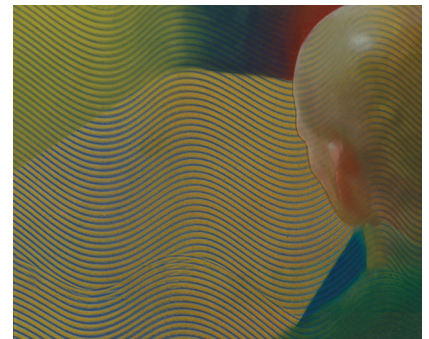


Image credits:

Kate Gilmore, *A Tisket, A Tasket* (still), 2013, single channel video, 32:14 minutes, color, sound, courtesy of the artist

Keltie Ferris, *Rider*, 2022, oil, powdered pigment, and vinyl paint on paper, 40 x 26 inches, © Keltie Ferris, courtesy of the artist and Mitchell-Innes & Nash, New York

Marisol, *Untitled (1 of 6)*, 1978, lithograph on paper, 52 x 38 inches, edition 45 /100, collection of University Art Museum, University at Albany, State University of New York on behalf of The University at Albany Foundation, gift of Mrs. Ivan Radin

Barrow Parke, *MYCK3*, 2015, hand woven and sewn fabric, 27 x 24 inches, collection of Zoë and Joel Dictrow

Barrow Parke, *Shapes in Time*, 2022, acrylic and embroidery on hand-loomed linen, 19 5/8 x 19 5/8 inches, courtesy of the artists and JDJ, New York and Garrison

Aaron Holz, *The onlooker*, 2007, oil, resin, and acrylic on panel, 9 1/2 x 11 1/2 inches, collection of University Art Museum, University at Albany, State University of New York on behalf of The University at Albany Foundation, gift of Aaron Holz

About the University at Albany:

The [University at Albany](#) is one of the most diverse public research institutions in the nation and a national leader in educational equity [and social mobility](#). As a Carnegie-classified R1 institution, UAlbany and its faculty and students are creating critical new knowledge in fields such as artificial intelligence, atmospheric and environmental sciences, business, education, public health, social sciences, criminal justice, emergency preparedness, engineering, informatics, public administration, and social welfare. Our courses are taught by an accomplished roster of [faculty experts](#) with student success at the center of everything we do. Through our parallel commitments to academic excellence, scientific discovery, and service to community, UAlbany molds bright, curious, and engaged leaders and launches great careers.

###