

SUPPORTERS

The following donors to The University at Albany Foundation designated *all or a portion* of their gifts to the University Art Museum from July 1, 2012 to June 30, 2013.

William J. Milne Society (\$100,000 to \$249,999) UAlbany Alumni Association

***Esther L. Lewis
Jay Lewis
Robin Kanson Lewis '70
Kathryn K. Lowery '75
Michael C. Lowery '76
Beth E. Lorber Scher '08
Mark Scher
H. Patrick Swygert
Jennifer Troiano
John P. Troiano '83

William B. Picotte
Nancy A. Pierson '69
Ian H. Porter
Constance H. Saddlemire '78
Gloria Schreiner
Robert J. Schreiner
Richard W. Southwick '75
Judith J. Twombly
Michael Vinci
Mary G. Wood

Fountain Society (\$5,000-\$9,999)

*Michael A. Boots
*Marco A. DeThomasis
Charles A. Forma '73
Jean Edgumbe Groff '38
Ann C. Mataraso '02
Matthew H. Mataraso, Esq.

Minerva Club (\$500-\$999) Arthur R. Cronson '69

Carillon Club (\$250-\$499)

Kim M. Bessette '90
Tom Bessette
Dorice K. Brickman '69
Werner Feibes
Agostino Futia '01

Contributors Club (under \$100)

Jack Brennan
Mary Brennan
Elsa Gerst deBeer
Trudi E. Jacobson '80
Lori Lawrence-Wixon '78
Jane M. Schwamberger '71
Gerald A. Thompson '81
Patricia Alsid Thompson '85
Gregor M. Wynnyczuk '96

Podium Society (\$2,500-\$4,999)

**Fidelity Foundation
James P. Ferris
Donald Killoran
Ruth M. Killoran
Georgiana Panton
James E. Panton '53
Susan D. Phillips
Susan V. Shipherd '64

Albany Club (\$100-\$249)

Laura J. Backus '92
Timothy P. Backus '89
Shirley W. Brand
Gary Gold '70
Denise K. Hoecker '04
Marie-Louise McHugh
Mary Ann McLoughlin
Merrill Lynch, Pierce, Fenner & Smith Inc.
Christina Mochon
Susan Carroll Picotte, Esq.

Donors to the Collections

Nava Atlas
Charles M. Liddle, III
***Nancy Hyatt Liddle
Peter Norton Christmas Project

Purple and Gold Society (\$1,000-\$2,499)

Benjamin H. Lewis 2010
Charitable Lead Annuity Trust
***James A. Clark
Rhea P. Clark

The University Art Museum gratefully acknowledges the continuing support of the University at Albany Office of the President, Office of the Provost, and The University at Albany Foundation, as well as generous grants from the Alumni Association's Grandma Moses Fund and University Auxiliary Services (UAS).

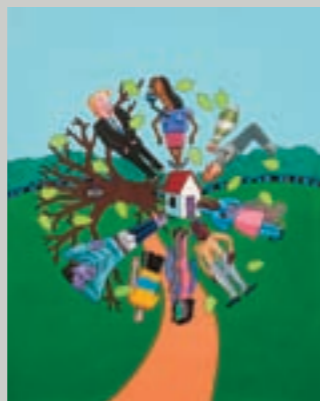
THE UNIVERSITY AT ALBANY FOUNDATION

As UAlbany's fundraising and stewardship entity, The University at Albany Foundation manages the financial resources donors entrust to it, recognizes supporters for their generosity, and distributes their gifts in accordance with their wishes. Thanks to our donors, The Foundation provided nearly \$800,000 in scholarship support to students, almost \$300,000 in prizes and awards, and over \$2.6 million in faculty and campus support in 2012-13.

Your tax-deductible gift to the University Art Museum through The University at Albany Foundation will likewise have a great impact. The museum's continued success depends on the generosity of friends like you. Your contribution will support innovative exhibitions that enrich the intellectual life of the university and the community, as well as programs that engage audiences and foster understanding of contemporary visual arts.

To designate your contribution for the University Art Museum, please visit us online at www.albany.edu/giving. For more information about ways to support the museum, please call Michael Boots at 518-225-1229.

PREVIEW 2014



Lamar Peterson
The Circumscribers, 2011
Acrylic on paper, 37 x 29 inches



Ken Ragsdale
Farmyard I, 2003
Digital print on paper, 11 x 14 inches



Mary Reid Kelley
The Syphilis of Sisyphus, 2011
Video still

Blue Plastic Bubbles: **Paintings by Lamar Peterson**

February 5 – April 6, 2014

Churning beneath the facade of Peterson's "happy family" paintings lurk larger issues surrounding race, community, economic uncertainty, and social upheaval. A two-day artist residency, which will include a public talk and class exhibition tours with the artist, will be funded by a grant from the Diversity Transformation Fund from the UAlbany Office of Diversity and Inclusion.

American Playlist

February 5 – April 6, 2014

Cutting a wide swath across American art, history, and culture from the early 1900s through 2012, this exhibition, drawn from the University's Fine Art Collection, will present the work of iconic American masters such as Edward Steichen, Jacob Lawrence, Robert Rauschenberg, and Andy Warhol alongside lesser-known and younger artists, including our own alumni. Campus members and viewers will be invited to lend their voices through published written responses to works in the exhibition.

Mary Reid Kelley: **Working Objects and Videos**

July – October, 2014

The museum will partner with the Samuel Dorsky Museum of Art, State University of New York at New Paltz, to present Mary Reid Kelley's visually rich and intellectually stimulating videos. The exhibition will offer a unique opportunity to see the costumes, objects, and drawings that come to life in her videos. Curated by Daniel Belasco, curator of exhibitions and programs at the Samuel Dorsky Museum of Art.

MUSEUM STAFF:

Darcie Abbatiello, Registrar
Nicole Herwig, Student Intern
Zheng Hu, Exhibition Designer
Naomi Lewis, Exhibition and Outreach Coordinator
Joanne Lue, Administrative Assistant
Ryan Parr, Collections Production Coordinator
Emily Pfeil, Student Intern
Janet Riker, Director
Corinna Ripps Schaming, Associate Director/Curator
Nora Vega, Volunteer
Jeffrey Wright-Sedam, Preparator
Constance Yang, Volunteer



www.albany.edu/museum

UNIVERSITY ART MUSEUM
UNIVERSITY AT ALBANY State University of New York

1400 Washington Avenue
Albany, NY 12222



Kate Gilmore
A Tasker, 2013, video still

UNIVERSITY ART MUSEUM UNIVERSITY AT ALBANY

2013 Year-End Report

FROM THE DIRECTOR



This year has brought exciting changes to the University at Albany with the arrival and inauguration of our nineteenth president, Robert J. Jones, Ph.D. The museum was proud to host one of Dr. Jones's first public events: the opening reception of *Day After Day: The Diaristic Impulse*, an exhibition underwritten by a major gift from Kathryn Zox MSW '83. The reception was an opportunity for Dr. Jones to meet many enthusiastic museum donors and supporters. Museum programs can only be realized when the university, foundations, corporations, and private donors come together to make a difference.

The impact of gifts to the museum can be enormous, but not always as obvious as the proverbial stone and its ripples. For example, *Day After Day* presented artists whose work reflected the idea of the diary as a container for memories; the exhibition was also a resource for classes from Introductory Portuguese to Cultural Diversity and the Human Condition. The annual *Master of Fine Arts Thesis Exhibition*, supported by the Ann C. Mataraso MFA '02 Endowment Fund, provides graduates with the opportunity of exhibiting in a professional museum, an experience that can benefit them long after they leave the university.

The Ellsworth Kelly Foundation's support for museum publications extends the reach of our exhibitions far beyond the museum's walls. Sent to curators, artists, museums, and libraries across the country, our publications are also available for purchase on the museum's website. They can be found in museum bookstores, including Mass MoCA; the Philbrook Museum in Tulsa, Oklahoma; and the Mint Museum in Charlotte, North Carolina, as well as through D.A.P., the premier distributor of books on modern and contemporary art.

The University's Fine Arts Collection grows through grants and gifts. Supported by a grant from the Alumni Association's Grandma Moses Fund, the Arthur N. Collins '48 Purchase Award has made possible annual purchases of work by alumni from the *Artists of the Mohawk-Hudson Region* exhibition. The UAlbany Class of 1963 recently designated part of their class gift for conservation and restoration of works in the collections.

Through the generosity of friends and supporters, we have been able to grow our collections and realize our goal to present challenging, innovative, and culturally diverse exhibitions and educational programs. The University Art Museum enriches the lives of students, members of the University community, and area residents; we advance scholarship, inspire creativity, and deepen understanding of art, culture, and the issues of our time.

Every gift is important. Please visit the museum's website, or send the enclosed form with your year-end gift. No donation is too small.

All the best to you and your family for the holiday season and the new year.

Janet Fiske
Director

EXHIBITIONS AND PROGRAMS 2013



Day After Day: The Diaristic Impulse February 5 – April 6

The obsessive desire to record day-to-day activities, document private worlds, or chart the passage of time was reflected in work by Guy Ben-Ner, Simon Evans, Ray Hamilton, Byron Kim, Meridith McNeal, Laurel Nakadate, David Shapiro, Rirkrit Tiravanija, Harvey Tulcensky, and Martin Wilner. In conjunction with the exhibition, Edward Schwarzschild read a short story commissioned for the *Day After Day* catalogue and fiction writer Scott Hutchins read from recent work.

Underwritten by a generous gift from Kathryn Zox MSW '83.

Guy Ben-Ner
Stealing Beauty, 2007
Video still



Kate Gilmore: A Tisket, A Tasket October 18 – December 14

Gilmore's performances and videos explored themes of displacement, struggle, and female identity. Often resembling anonymous career women, her protagonists struggle to overcome absurd and manufactured physical challenges. The exhibition featured a new performance and video commissioned by the museum. Gilmore presented a public gallery talk as part of the artists' reception.

The artist's talk was made possible with a grant from New York State Council on the Arts' Electronic Media and Film Presentation Funds grant program, administered by The ARTS Council of the Southern Finger Lakes.

Kate Gilmore
Pot, Kettle, Black, 2010
Video still



Master of Fine Arts Thesis Exhibition Master of Arts Exhibition May 3 – 19

Master of Fine Arts degree candidates Carlos Arturo Arias, Jordan N. Baker, Alicia Doebler, Brian Mungavin, Shotaro Nakano, Melissa Sarris, and Greg Skochko presented work that formed the core of their visual theses and demonstrated the expertise with which these emerging artists explore their media. Also featured was work by Master of Arts candidates Michael Coughlin, James Gartner, Bethany Gessinger, and Xiao Wang.

Supported by the College of Arts and Sciences, the Art Department, and the Ann C. Mataraso MFA '02 Endowment Fund in honor of Professor Emeritus Mark Greenwald.

Brian Mungavin
Untitled (Lincoln) (detail), 2012
Inkjet transfer, pencil, acrylic on cotton sheet, 38 x 28 inches



Suzanne McClelland: Furtive Gesture_CEDepart2 October 18 – December 14

Best known for incorporating language with vivid abstract compositions, McClelland created a band of layered contemporary source material around the entire second floor of the museum. The installation gave visual form to the language and gestures that influence cultural and political exchange. McClelland presented a public gallery talk as part of the artists' reception.

Suzanne McClelland
Installation view, 2013



William Lamson: A Certain Slant of Light June 27 – September 14

Lamson presented video, photography, and sculpture that addressed issues of masculinity, amateurism, science, play, and the illusive quest for personal heroism that accompanies these subjects.

William Lamson
Untitled, January 28, 2013
Pigment print, 32 x 48 inches



Michelle Segre: Antecedents of the Astral Hamster June 27 – September 14

The exhibition featured Segre's idiosyncratic drawings and new sculptures, using reworked armatures and recycled materials in combination with elements such as rocks, milk crates, papier-mâché, colored yarn, and plaster to reflect her intuitive, highly personal approach to artmaking.

Michelle Segre
Self-Reflexive Narcissistic Supernova, 2013
Installation view

"CELEBRATE & ADVANCE" EVENTS

The museum joined "Celebrate & Advance," a week-long series of events to honor the inauguration of Robert J. Jones, Ph.D. On September 26, the museum opened its doors for "Behind the Scenes," a rare glimpse of work in progress that revealed the preparation required for museum exhibitions. Kate Gilmore videos and the climbing structure commissioned for her exhibition were featured. Students, University staff, community members and President Jones and his wife, Lynn Hassan Jones, dropped by to see the activities.



Work-study student Devon Deneke in a workshop with Hackett middle schoolers.

On September 25, the museum presented "All in a Day's Work at the University Art Museum" at Hackett Middle School as part of the Albany Promise Cradle-to-Career Partnership. Museum staff, interns, work-study students, and volunteers instructed sixth graders about the roles of museum staff and the process of selecting artworks for a theme exhibition.

STUDENT ENGAGEMENT

The museum plays an important role in the academic life of the university. This year we welcomed over fifty student groups and classes that included Writing and Critical Inquiry, Intensive English Language, Cultural Diversity and the Human Experience, and Journalism, as well as students participating in Honors College, Living and Learning Communities, and International Student tours. In addition to fifteen undergraduate work-study students, two students from the UAlbany Internship in Art History program worked closely with staff on components of exhibition preparation, including registration of artworks, condition reporting, and preparing written material for exhibition publications. Two student volunteers assisted with the ongoing project of taking inventory of collections artworks exhibited at public locations on campus.

COLLECTIONS NEWS



Antoni Milkowski
Fives, 1968
Stainless steel, 4 x 20 x 4 feet
Gift of Anna Milkowski, 2012

Antoni Milkowski's *Fives*, 1968, is a prominent addition to the Collins Circle entrance plaza adjacent to UAlbany's new School of Business building. The work was the generous gift of the sculptor's daughter, Anna Milkowski. A geometric steel sculpture, consisting of five rectangular prisms, *Fives* demonstrates Milkowski's ability to combine monumental scale and massive material in seemingly weightless form. Susan Hartung, the sculptor's widow, was present for the ribbon-cutting ceremony on August 19. Antoni Milkowski (1935–2001) was professor of art at Hunter College from 1965 to 1998. His sculptures are in the collections of the Museum of Art in New Orleans, the Albright-Knox Gallery in Buffalo, and the American Embassy in Warsaw, Poland, among others.

The museum is proud that two works from the collections are currently traveling as part of major national exhibitions. Carroll Cloar's *The Rose Eater* was included in the Memphis Brooks Museum of Art's exhibition *The Crossroads of Memory: Carroll Cloar and the American South*, which will travel to the Georgia Museum of Art in Athens and the Arkansas Arts Center in Little Rock. Curator Stanton Thomas writes, "The paintings of Carroll Cloar rank among the most haunting and beautiful evocations ever made of the American South." Carroll Cloar (1913–1993) is represented in the collections of the Metropolitan Museum of Art, the Museum of Modern Art, the Whitney Museum of American Art, and the Hirshhorn Museum and Sculpture Garden in Washington, D.C.



Richard Diebenkorn
Seated Woman #44, 1966
Charcoal and crayon on paper
30 1/4 x 24 1/4 inches
Purchase with funds from the Student Art Council, 1970

Richard Diebenkorn's *Seated Woman #44* is on loan to the exhibition *Richard Diebenkorn: The Berkeley Years 1953–1966* presented at the de Young Museum in San Francisco and the Palm Springs Art Museum. The exhibition includes over 130 of the artist's paintings and drawings assembled from collections across the country. Richard Diebenkorn (1922–1993) was born and educated in San Francisco. Though he is often associated with the Bay Area Figurative Movement of the 1950s and 1960s, Diebenkorn moved between abstraction and figuration throughout his life. His work is represented in the collections of museums worldwide and he is considered to be a major influence on painters of the late twentieth century.

The museum received gifts of nine paintings, sculptures, and works on paper by Nava Atlas, William Clark, Marijo Dougherty BA '74, MA '77, Escher Architecture, Robert Goodnough, Bernard Lignon, Gail Nadeau, Tom Nelson, and Philippe Noyer. A mixed-media work on paper by Wendy Ide Williams MFA '85 was purchased from the 2013 *Artists of The Mohawk-Hudson Region* exhibition.