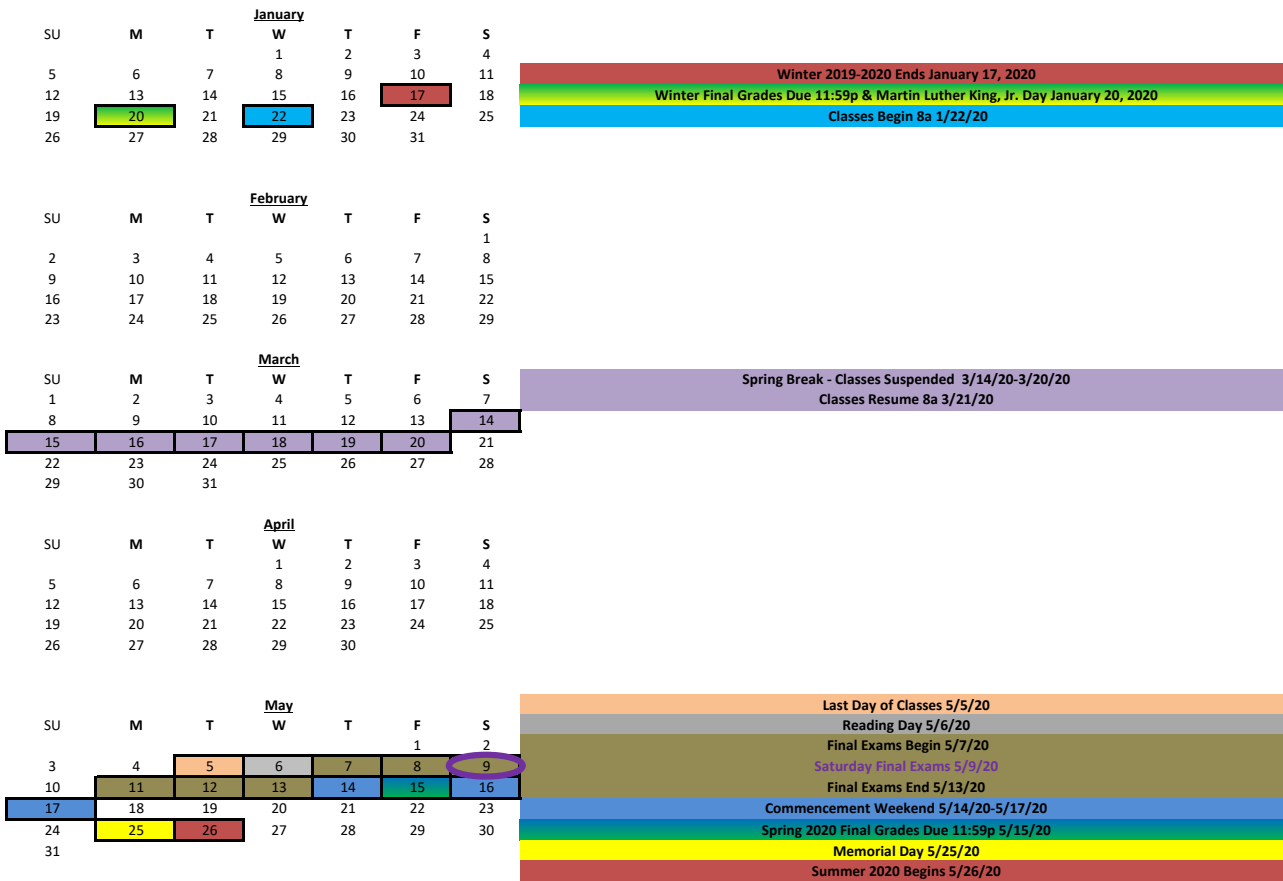


# Spring 2020



| Day       | Day Count | Pattern | Count | # of instructional days (M-F) | # of Exam Days |
|-----------|-----------|---------|-------|-------------------------------|----------------|
| Monday    | 14        | MWF     | 42    | 70                            | 6              |
| Tuesday   | 14        | MW      | 28    |                               |                |
| Wednesday | 14        | TTH     | 28    |                               |                |
| Thursday  | 14        | S/SU    | 28    |                               |                |
| Friday    | 14        |         |       |                               |                |
| Saturday  | 14        |         |       |                               |                |
| Sunday    | 14        |         |       |                               |                |

Saturday Final Exams

The Academic Planning Calendar is subject to change at any time by official action of the University at Albany  
 SPRING 2020 FINAL 12-11-18.xls