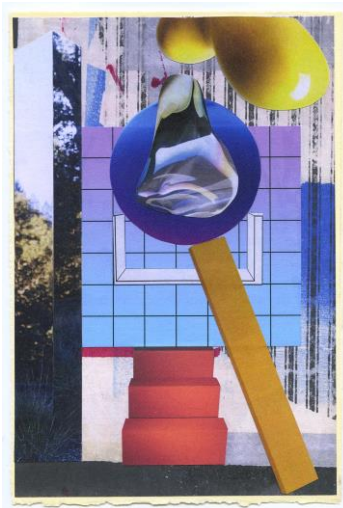


## PRESS RELEASE



Christine Snyder  
*Nine*, 2015  
Terracotta clay, acrylic paint, latex paint, wood, mdf, cardboard, air dry clay, sandbags, glue, pvc pipe  
Dimensions variable



Kyle Avery  
*Pyramid*, 2015  
Collage on paper  
16 x 12 inches



Lacey L. Dickerson  
*Ring Leader*, 2015  
Mixed media on paper  
105 x 60 inches

**For Immediate Release**

April 7, 2016

### **Master of Fine Arts Thesis Exhibition Opens at University Art Museum**

**On view April 29 through May 15, 2016**

Artists' Reception: Friday, May 6, 5 – 7 pm

**Museum Hours:** Tuesday, 10 am – 8 pm; Wednesday - Friday, 10 am – 5 pm;  
Saturday, noon - 4 pm. Closed May 5 all day and May 6 until 3 pm for MFA oral examinations.  
**Expanded Commencement Hours:** Saturday, May 14, 11 am – 4 pm;  
Sunday, May 15, 11:30 am – 4 pm.

Free and open to the public.

The University Art Museum is pleased to announce the opening of its most recent exhibition featuring the work of the University at Albany Spring 2016 Master of Fine Arts (M.F.A.) candidates: **Kyle Avery, Paul Carpenter, Ryan Chase Clow, Lacey L. Dickerson, Andrew Dines, Brennan Goodwin, Meghan O'Connor, David Nicolas Reisine, Christine Snyder, John Callaghan Williams, and Simeon Youngmann.**

-more-

#### **UNIVERSITY ART MUSEUM**

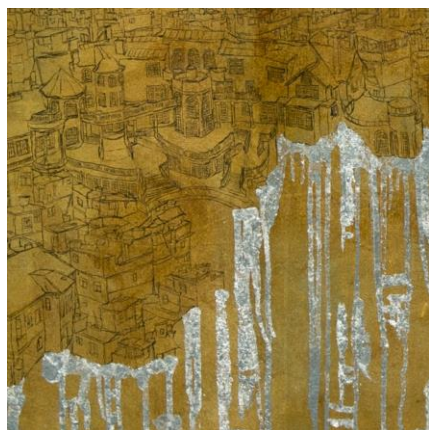
University at Albany, 1400 Washington Avenue, Albany, NY 12222  
Phone: 518-442-4035 Fax: 518-442-5075 E-Mail: [museum@albany.edu](mailto:museum@albany.edu)

The artists featured in this exhibition have just completed the University at Albany Department of Art and Art History's three-year, 60 credit-hour program of intensive training and study in fine art practices. At the end of their M.F.A. studies, candidates are required to exhibit a cohesive body of their work. This work forms the core of the M.F.A. candidates' visual thesis and demonstrates the vigor and expertise with which these emerging artists explore their respective choice of mediums.

The University Art Museum provides M.F.A. candidates with the opportunity to exhibit their work in a professional museum setting. At the same time the museum offers area viewers a unique opportunity to see how today's emerging artists are addressing contemporary issues in the visual arts.

*The exhibition is supported by the Office of the President, Office of the Provost, The University at Albany Foundation, the College of Arts and Sciences, and the Ann C. Mataraso Endowment Fund in honor of Professor Emeritus Mark Greenwold.*

For further information on exhibitions and programs, call (518) 442-4035 or visit our website at [www.albany.edu/museum](http://www.albany.edu/museum)



Andrew Dines  
*Home* (detail), 2016  
Acrylic, ink, aluminum leaf, latex,  
and rust on canvas  
56 x 84 inches



Simeon Youngmann  
*Jonah, Jonah*, 2015  
Graphite and palm ash on paper  
42 x 30 inches



David Reisine  
*Puddles in Space*, 2016  
Steel installation  
Dimensions variable

### **Upcoming Exhibition:**

*Future Perfect: Picturing the Anthropocene*  
July 12 – December 10, 2016

Media contact: Naomi Lewis, Exhibition & Outreach Coordinator, [nlewis@albany.edu](mailto:nlewis@albany.edu)

#### **UNIVERSITY ART MUSEUM**

University at Albany, 1400 Washington Avenue, Albany, NY 12222  
Phone: 518-442-4035 Fax: 518-442-5075 E-Mail: [museum@albany.edu](mailto:museum@albany.edu)