







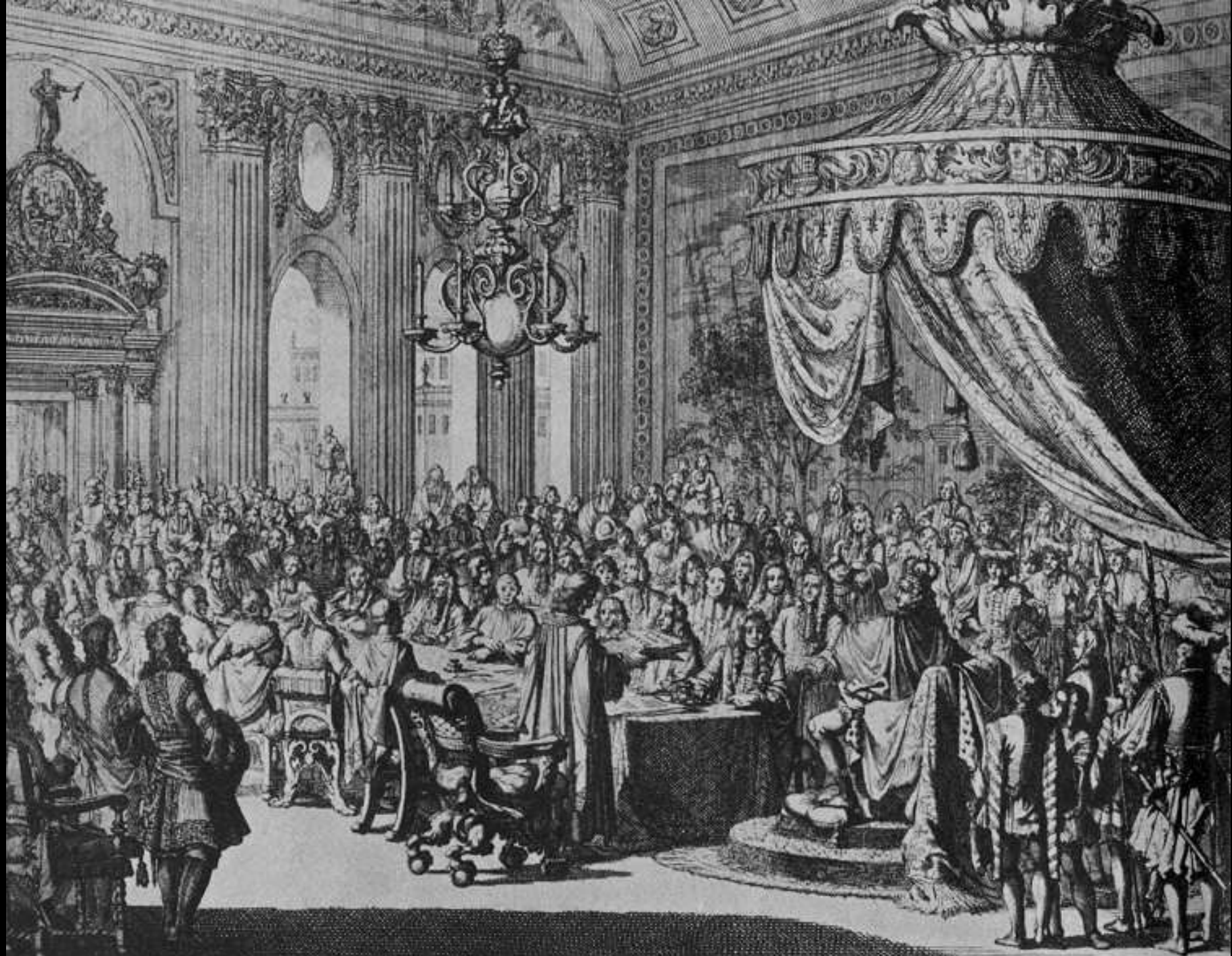


BED-CHAMBER ETIQUETTE. — Page 15.



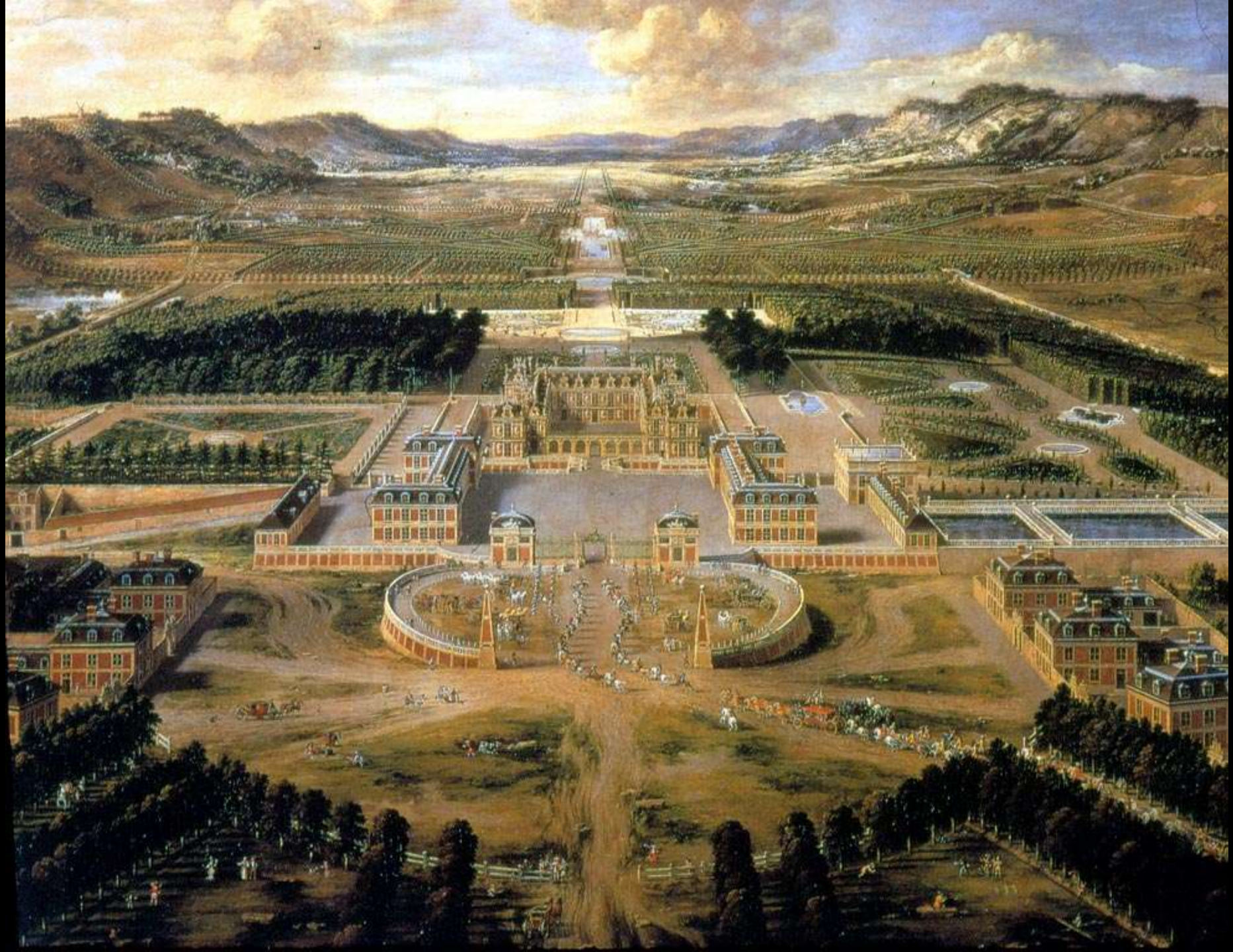
























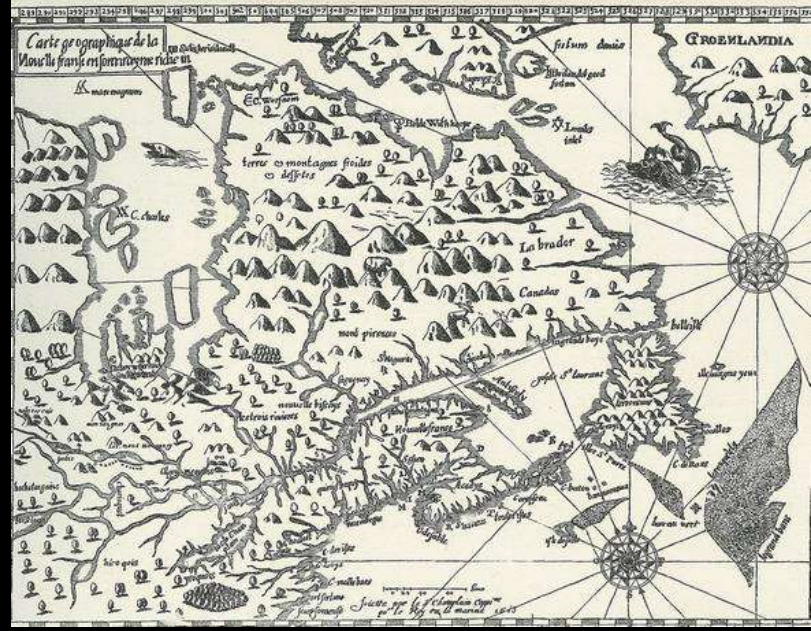


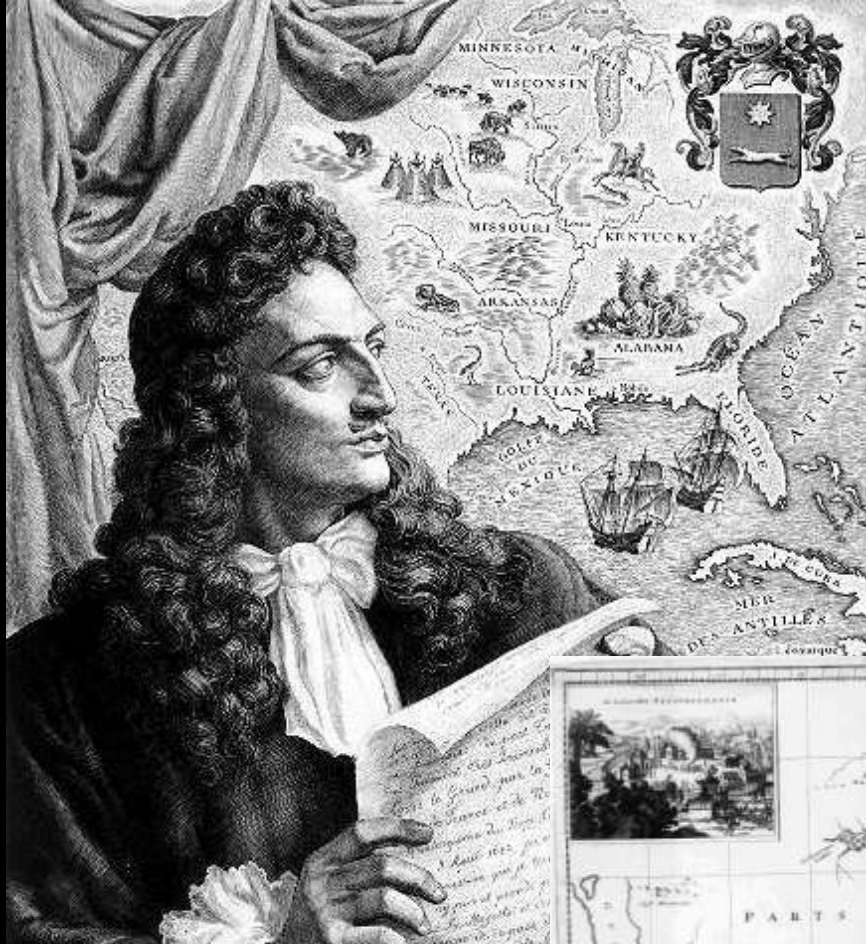






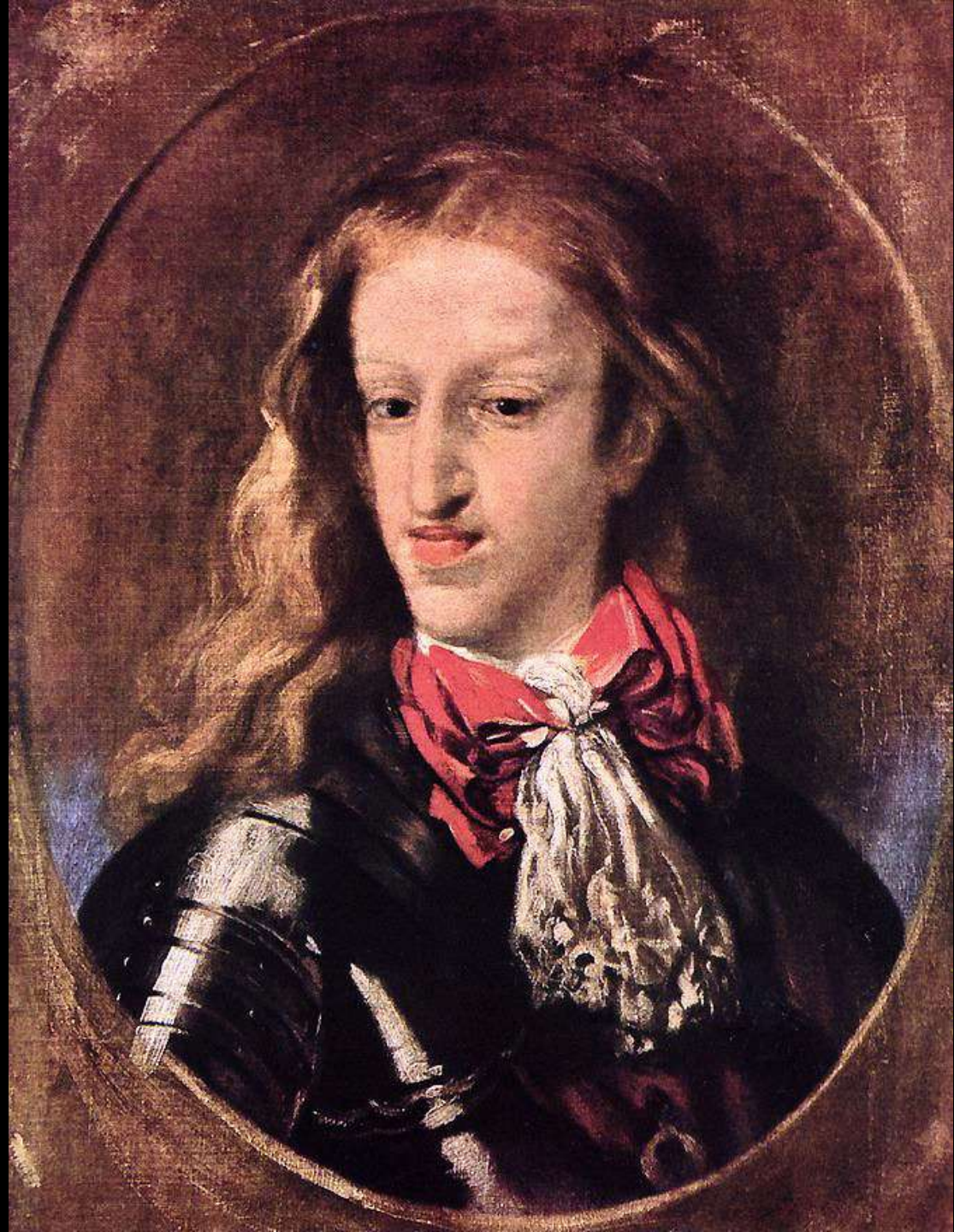




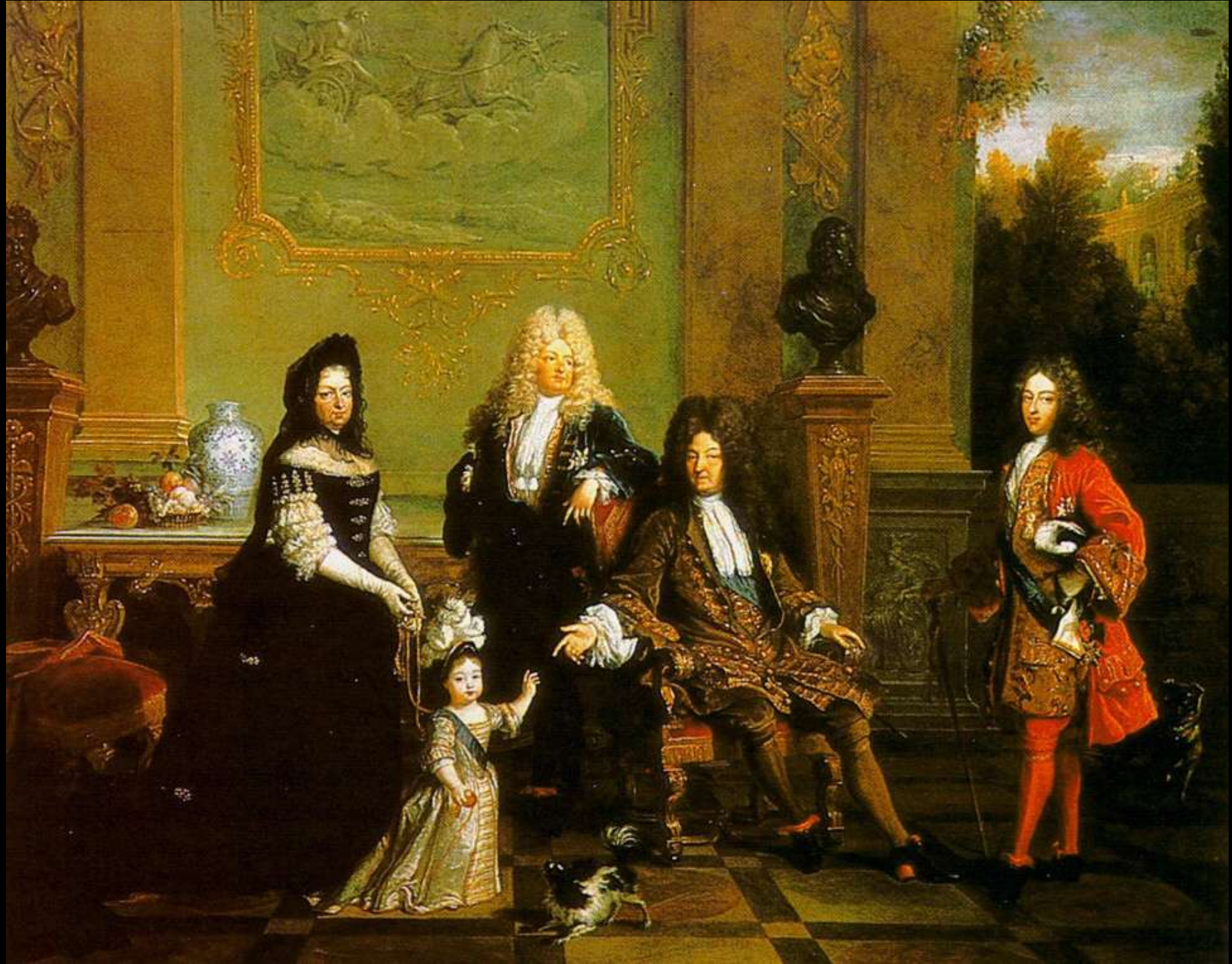




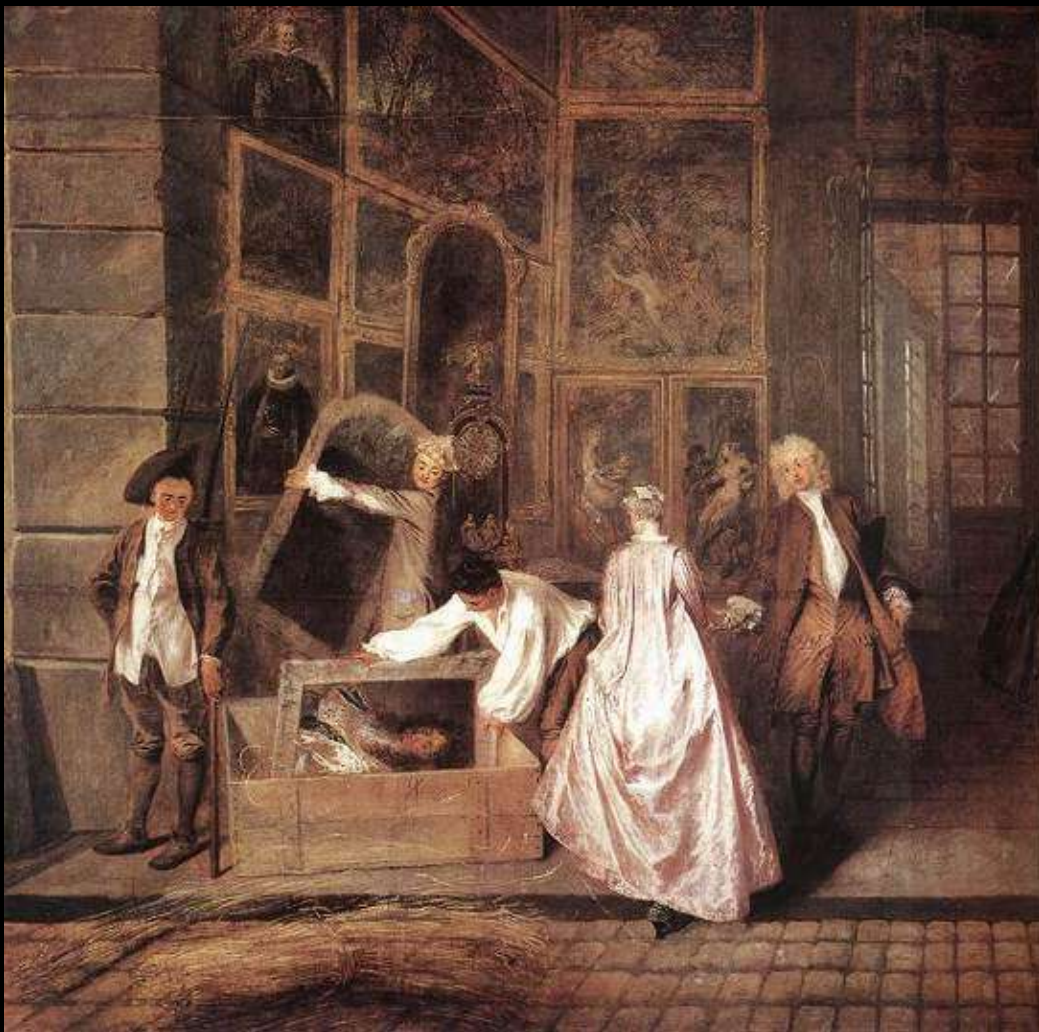












EXTENSION OF THE FRENCH FRONTIER, 1600-1760
Acquired, 1600-1640
Acquired, 1640-1680
Acquired by Treaty of the Pyrenees, 1659
Acquired by Treaty of Aix-la-Chapelle, 1713
1680-1700
1700-1760
1760-1768

The dates indicate the year of acquisition by France, when involved in purchase, the year of loss. The 1768 payment includes the Province of the Edict of Nantes (1685) then La Rochelle.

Scale 1:5,000,000



The pink line indicates the frontier in the case of the last Imperial cession in Alsace, the actual French jurisdiction till 1871, when it was ceded to Prussia. In the case of Alsace, the right is reserved by France as from the year 1849.

1. In the case of Alsace, the possession by France, viz. of Alsace, is shown in pink. 2. In the case of Alsace, the possession by France, viz. of Alsace, is shown in pink. 3. In the case of Alsace, the possession by France, viz. of Alsace, is shown in pink. 4. In the case of Alsace, the possession by France, viz. of Alsace, is shown in pink. 5. In the case of Alsace, the possession by France, viz. of Alsace, is shown in pink.