

Figure1. From global to local: three new dimensions

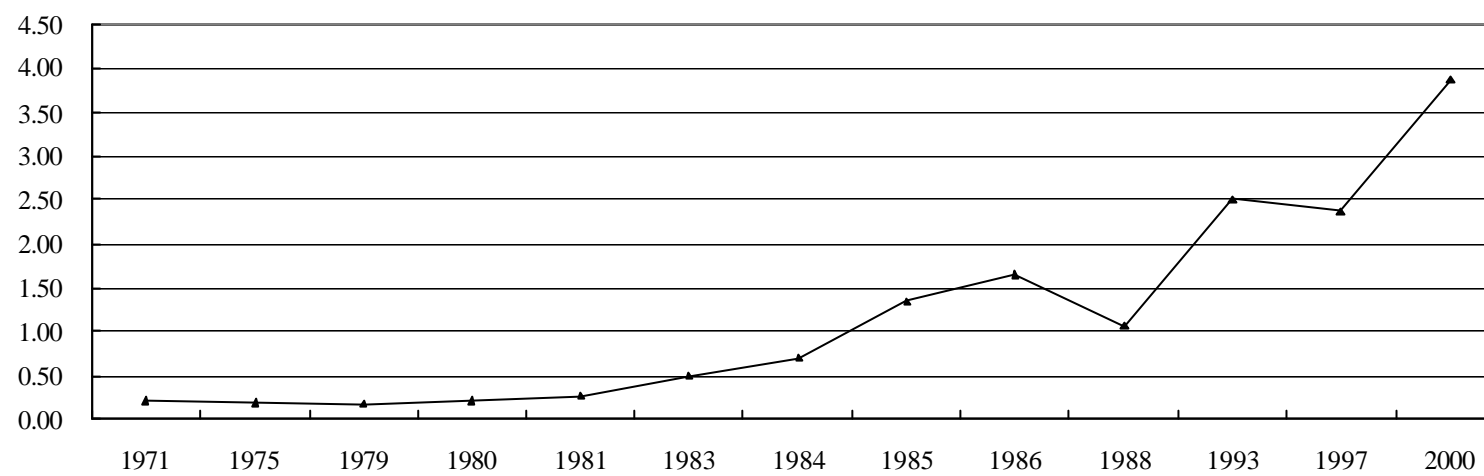


Figure 2. Rural migrant increase, 1971-2000 (unit: million)

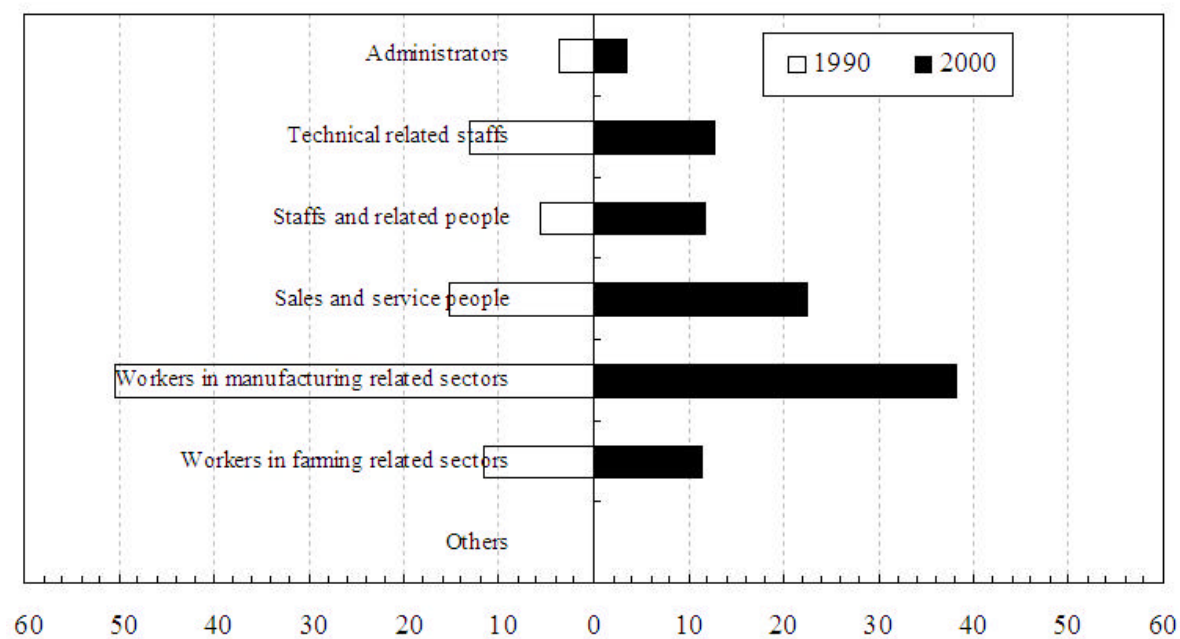


Figure 3. Occupation structures in 1990 and 2000

Sources: 1990, 2000 census

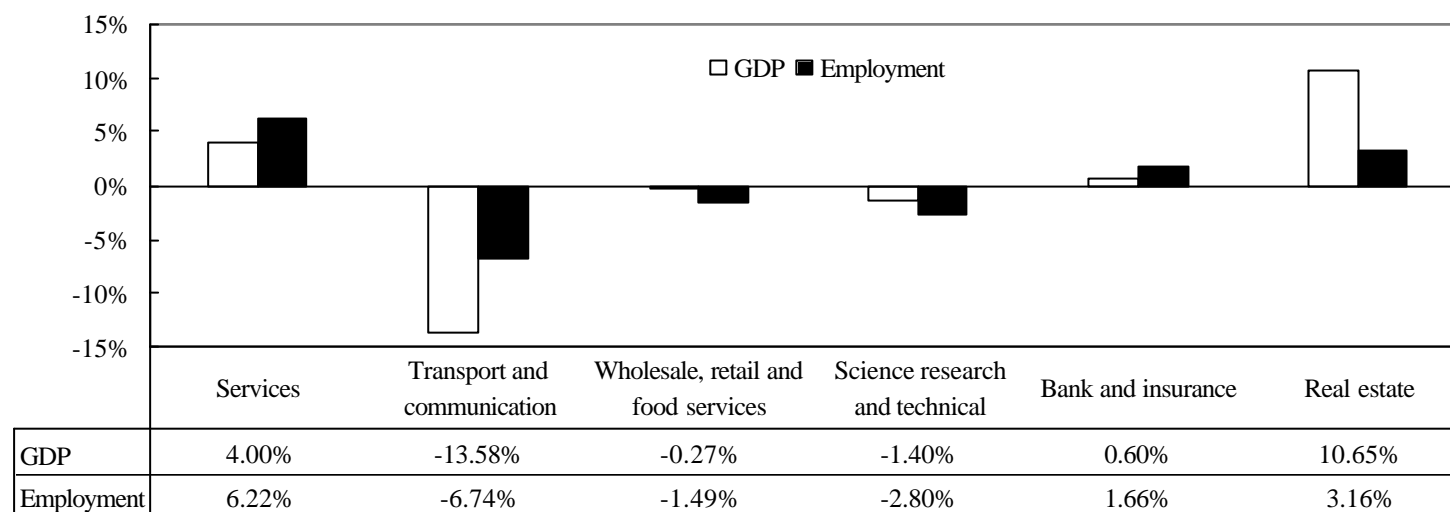


Figure 4. Change in tertiary sectors: GDP and number of employed persons, 1990-2000

Sources: SSB, 1990 and 2000

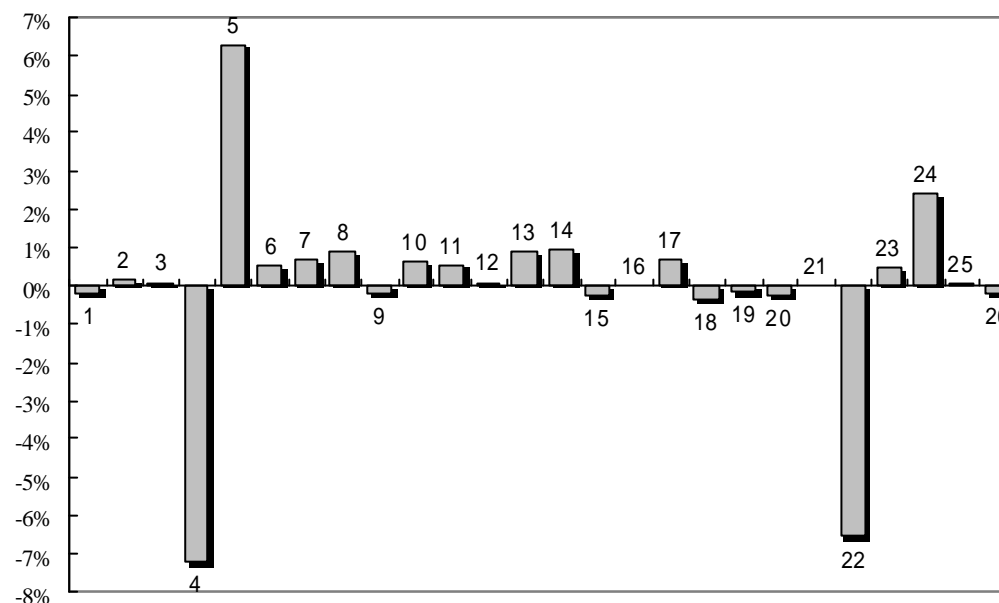


Figure 5. Change in the employment composition of manufacturing sectors, 1990-2000

Left to right: 1. Food Production 2. Beverage Production 3. Tobacco Processing 4. Textile 5. Garment and Other Fiber Products 6. Leathers, Furs, Down and Related Products 7. Timber Processing, Bamboo, Cane, Palm Fiber and Straw Products 8. Furniture Manufacturing 9. Papermaking and Paper Products 10. Printing and Record Duplicating 11. Stationery, Education and Sports Goods 12. Petroleum Processing and Coking Products 13. Raw Chemical Materials and Chemical Products 14. Medicine Manufacturing 15. Chemical Fiber Manufacturing 16. Rubber Products 17. Plastic Products 18. Nonmetal Mineral Products 19. Smelting and Pressing of Ferrous Metals 20. Smelting and Pressing of Nonferrous Metals 21. Metal Products 22. Ordinary Machinery Manufacturing 23. Electrical Equipment and Machinery Manufacturing 24. Electronic and Telecommunications Equipment Manufacturing 25. Instruments, Meters, Culture and Office Equipments Manufacturing 26. Others

Sources: SSB, 1990 and 2000 census

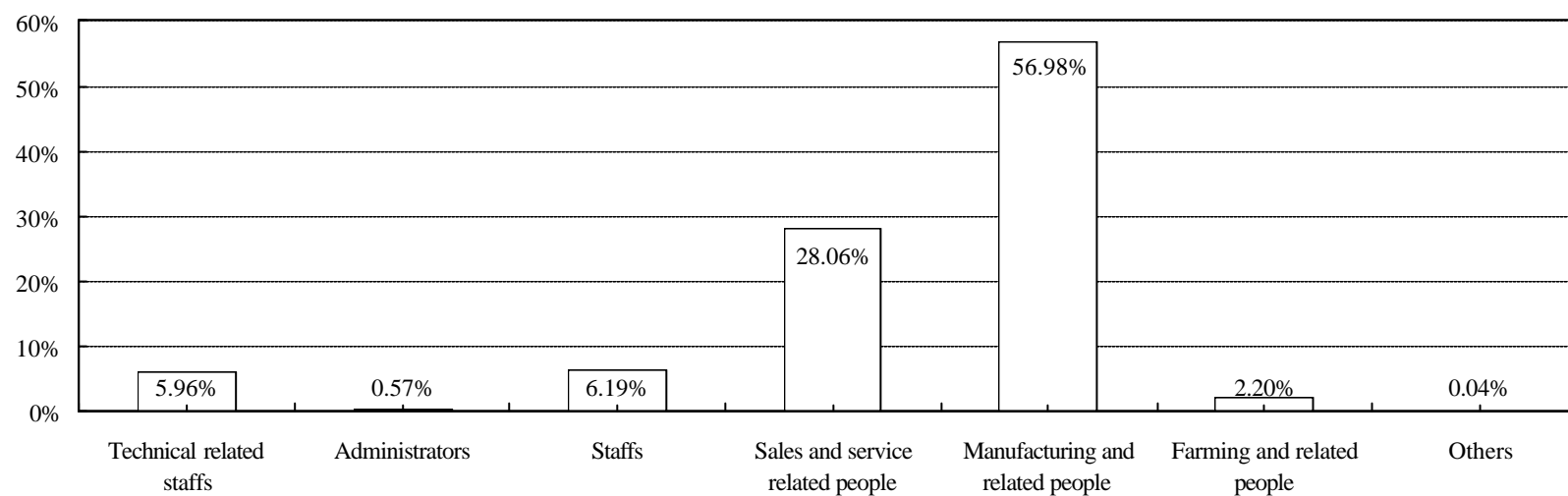


Figure 6 Composition of unemployment, 2000

Sources: SSB, 2000

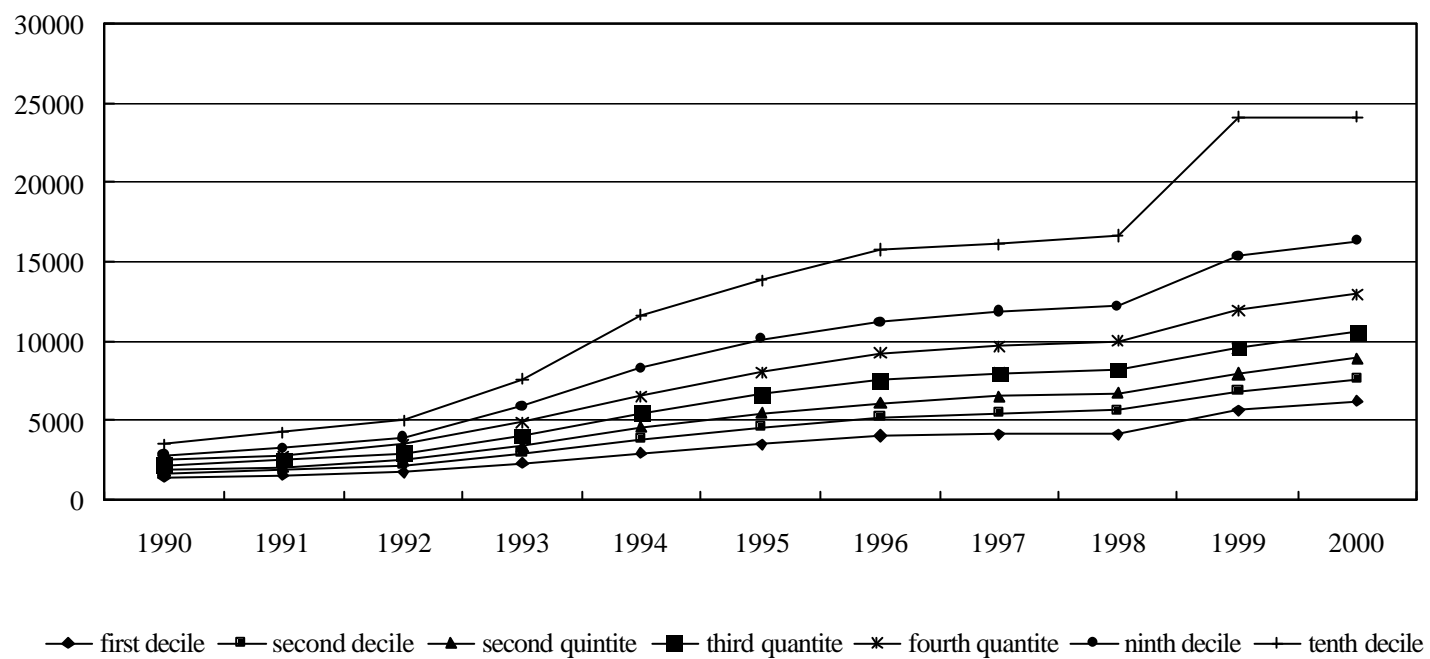


Figure 7. The widening disparity of annual income per capita (SSB, 2001)

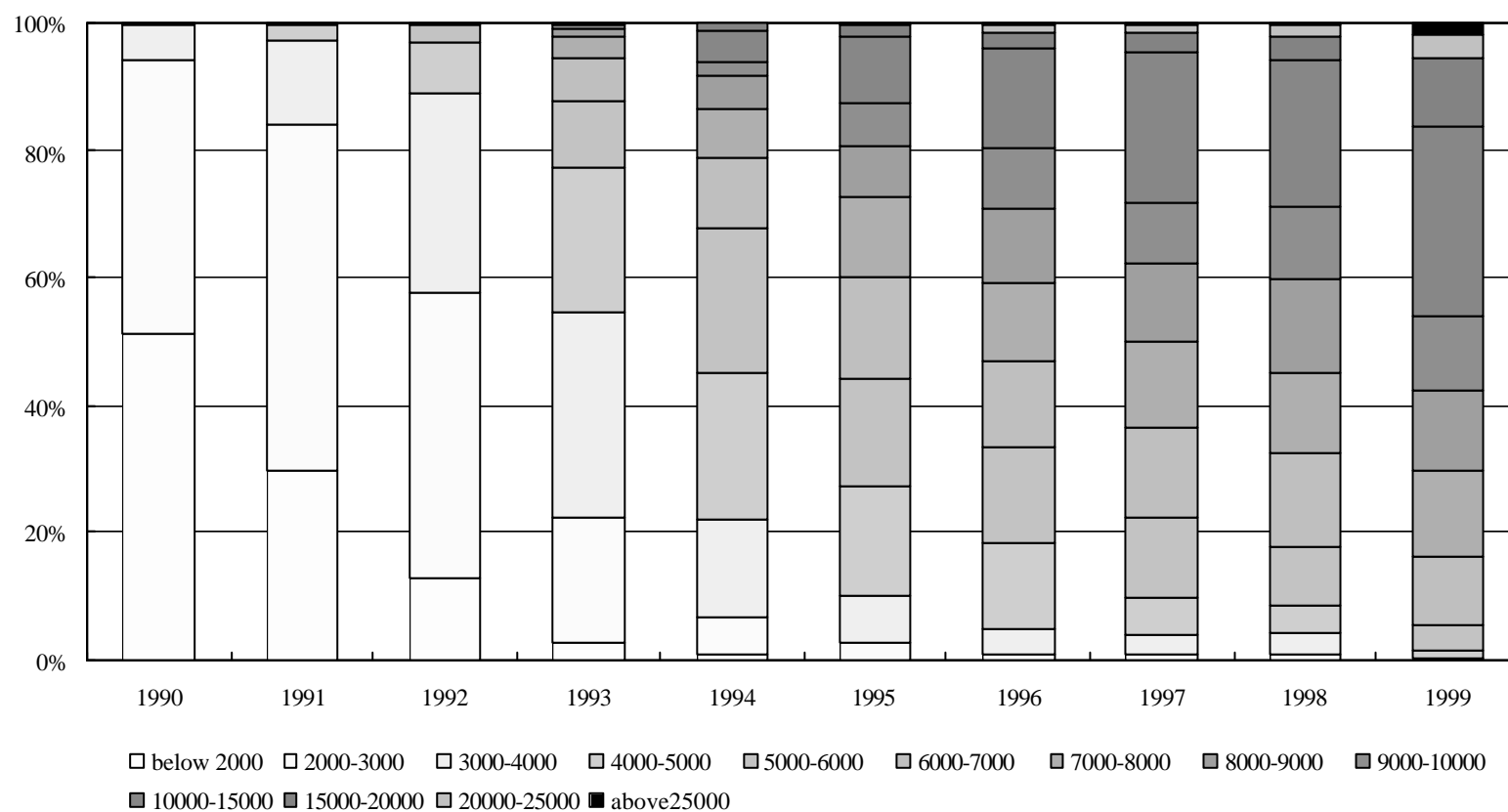


Figure 8. Percentage of households grouped by annual disposal income (SSB, 2000)

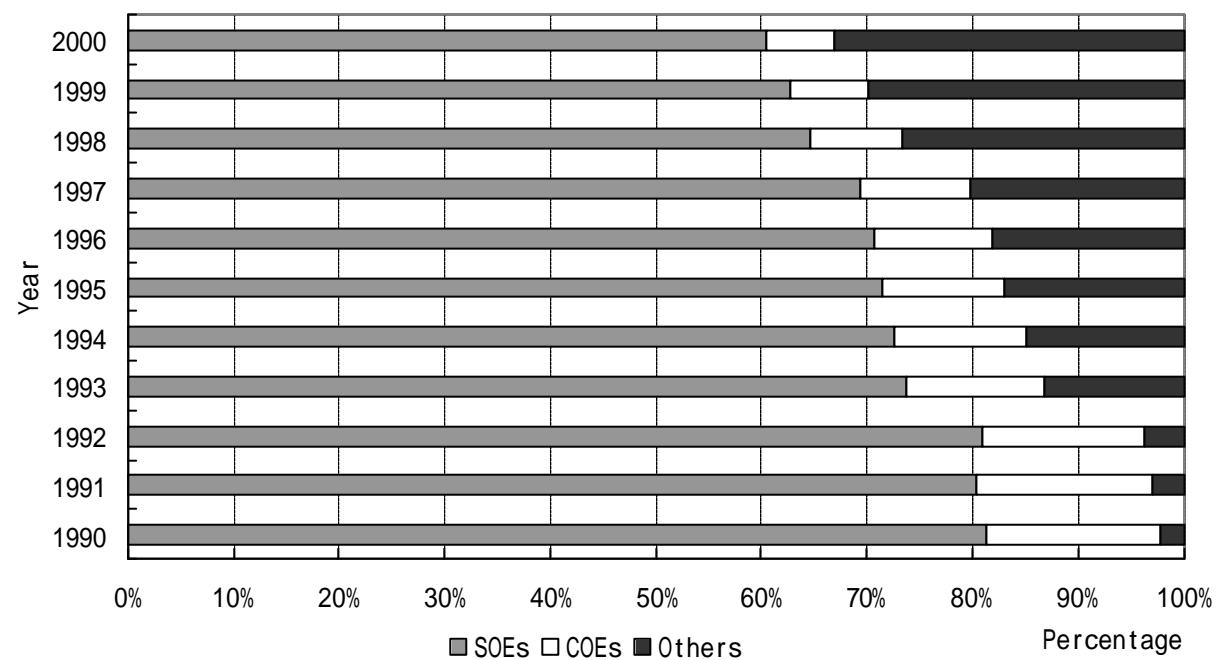


Figure 9. Total wage proportions by ownership category

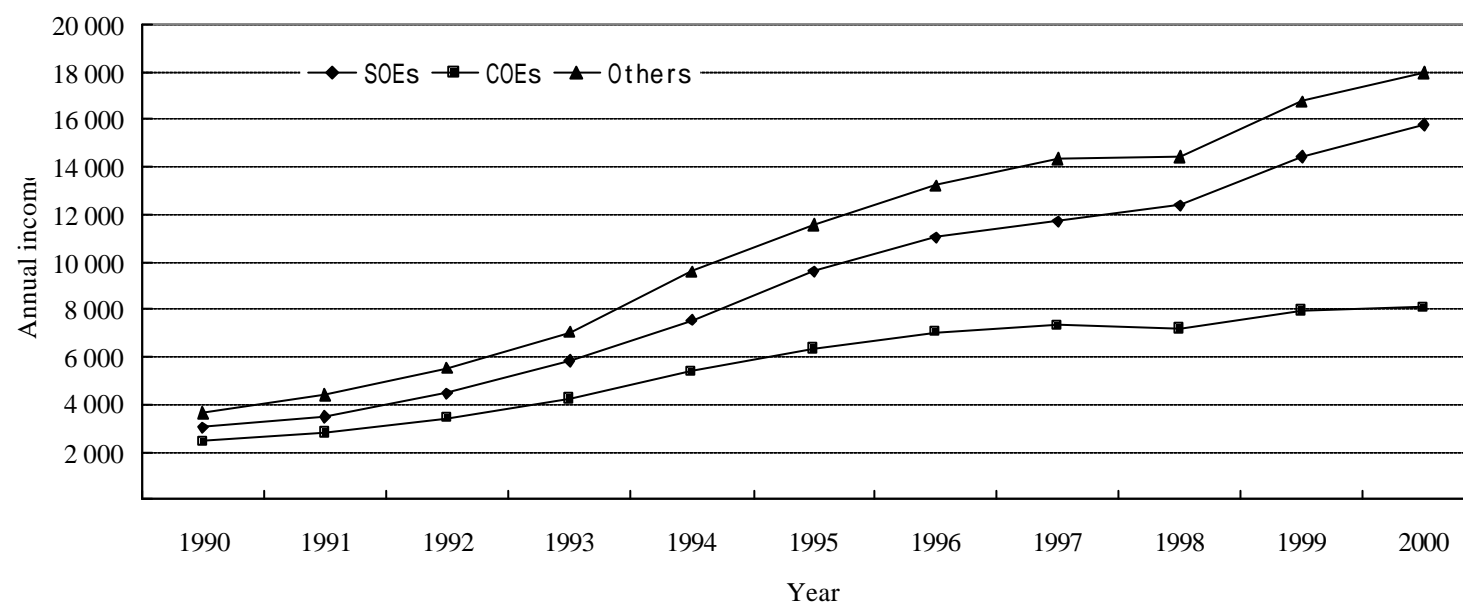


Figure 10. Annual wage of employee per capita by ownership category

Table 1. Change in the economic structure of Shanghai, 1990-2000

	1990	1995	2000		1990	1995	2000
Gross Domestic Product (Unit: Billion <i>yuan</i>)	75.645	246.257	455.115	Percentage	100	100	100
Primary Sector	3.26	6.168	8.32		4.31	2.50	1.83
Secondary Sector	48.268	140.985	216.368		63.81	57.25	47.54
- Industry	44.688	129.897	195.666		59.08	52.75	42.99
-Construction	3.58	11.088	20.702		4.73	4.50	4.55
Tertiary Sector	24.117	99.104	230.427		31.88	40.24	50.63

Note: Primary industry: agriculture (including farming, forestry, animal husbandry, sideline production, and fishing).

Secondary industry: industry (including mining, manufacturing, water supply, electricity generation and supply, steam, hot water, gas) and construction.

Tertiary industry: all other industries not included in primary or secondary industries.

Sources: SSB, 2003

Table 2. Foreign migrants/residents and related FDI in Shanghai, 2000 (including those from Hong Kong, Macao and Taiwan)

	Population (person)		Invested FDI (10,000 US\$)	
Total	60,020		2,295.131	
Country and Region				
Malaysia	1,278	2.13%	-	
Canada	1,361	2.27%	22,911	1.00%
Germany	1,511	2.52%	127,419	5.55%
United Kingdom	2,357	3.93%	68,289	2.98%
Singapore	2,808	4.68%	126,196	5.50%
Republic of Korea	3,294	5.49%	36,202	1.58%
Hong Kong, China	4,121	6.87%	971,226	42.32%
United States	6,354	10.59%	416,797	18.16%
Australia	6,420	10.70%	26,012	1.13%
Taiwan, China	10,522	17.53%	139,112	6.06%
Japan	12,270	20.44%	360,967	15.73%
Types				
Business People	10,517	17.92%		
Employees at Foreign Ventures	41,136	70.11%		
Children Entrusted to Others for	3,566	6.08%		
Upbringing				
Overseas Students and Interns	3,455	5.89%		

Source: SSB, 2001

Table 3. Growth of employment by ownership (1980=100)

Year	SOE and COE	Urban Self-employed	Others*	Total
1980	100	100	100	100
1990	116.8	663.1	1869.4	119.5
1991	119.6	651.4	2513.9	122.8
1992	119.6	712.6	5302.8	125.2
1993	115.0	723.4	6850.0	121.9
1994	112.7	1165.8	8727.8	122.1
1995	111.1	679.3	15105.6	124.4
1996	108.2	697.3	19077.8	124.7
1997	103.4	676.6	24894.4	124.5
1998	99.6	794.6	29758.3	124.8
1999	98.7	769.4	27863.9	122.4

Note: *‘Others’ refers to non-public enterprises: joint ventures and private enterprises, limited liability enterprises, stock-holding enterprises with limited liabilities, privately enterprises, etc.

Table 4. Occupation restructuring, 1990-2000

	1990		2000		1990-2000	
	Amount	Percentage	Amount	Percentage	Change	Percentage change
Total population	12,834,000		16,407,700		3,573,700	27.8
Jobs	8,058,500		8,115,100		56,600	0.7
Migrants	1,780,000*		3,870,000		2,090,000	17.42
	Amount		Amount			
Technical related staffs	1,075,230	13.14	1,039,630	12.81	-35,600	-0.3
Administrators	295,700	3.67	277,240	3.41	-18,460	-0.3
Staffs and related people	465,060	5.77	959,070	11.81	494,010	6.0
Sales and service people	1,223,280	15.17	1,821,010	22.44	597,730	7.3
Workers in manufacturing-related sectors	4,068,460	50.49	3,100,010	38.2	-968,450	-12.3
Workers in farming-related sectors	929,070	11.53	917,090	11.3	-11,980	-0.2
Others	1,700	0.02	1,080	0.01	-620	0.0

Sources: SSB, 1990 and 2000 census

Note: *As the 1990 data is not available, this figure is calculated as the average of the 1988 and 1993 data in the Statistics Yearbook.

Table 5. Composition of migrant employments in 2000 (above 15 years old)

Types	Total		15~34		35~64		65 Years Old and Above	
Total	284.28		208.03	73%	75.26	26%	0.99	1%
All Kinds of Technical Personnel	10.77	3.79%	8.44	4.06%	2.27	3.02%	0.06	6.06%
Staff in Administrative and Institutional Organs	1.54	0.54%	0.98	0.47%	0.54	0.72%	0.02	2.02%
Business Service Workers	39.46	13.88%	28.47	13.69%	10.89	14.47%	0.10	10.10%
Catering Service Workers	18.81	6.62%	15.94	7.66%	2.85	3.79%	0.02	2.02%
Community Service Workers	19.49	6.86%	12.71	6.11%	6.62	8.80%	0.15	15.15%
Agriculture, Forestry, Husbandry and Fishery Workers	20.74	7.30%	11.15	5.36%	9.42	12.52%	0.17	17.17%
Manufacture and Processing Workers	73.47	25.84%	63.67	30.61%	9.73	12.93%	0.07	7.07%
Construction Workers	55.53	19.53%	36.03	17.32%	19.39	25.76%	0.11	11.11%
Transportation Equipment Operators	8.29	2.92%	5.87	2.82%	2.41	3.20%	0.01	1.01%
Recycling Workers	4.51	1.59%	2.45	1.18%	2.00	2.66%	0.07	7.07%
Others	31.66	11.14%	22.31	10.72%	9.14	12.14%	0.22	22.22%

(Unit: 10,000)

Table 6. Educational level of the labour force, 1990-2000

Educational level	1990		2000		1990-2000	
	Amount	Percentage	Amount	Percentage	Number change	Percentage change
Semi-illiterate and below	1,618,205	16.9	262,520	5.2	-1,355,685	-11.6
Primary school	2,917,149	30.4	1,122,580	22.4	-1,794,569	-8.0
Secondary school	4,319,476	45.0	2,508,867	50.0	-1,810,609	5.1
University and above	750,832	7.8	1,122,220	22.4	371,388	14.6

Sources: SSB, 1990 and 2000 census

Table 7. Cross-tabulation of educational level and employment, 2000

	Technical related staffs		Administrators		Staffs		Sales and related staffs		Labourers and related workers		Farming-related workers		Others	
	Amount	%	Amount	%	Amount	%	Amount	%	Amount	%	Amount	%	Amount	%
Semi-illiterate and below	400	0.0	600	0.02	39400	0.41	570600	3.13	454100	1.46	1558900	17	1200	11.11
Primary school	1162	1.12	111800	4.03	399400	4.16	2492900	13.69	4402400	14.2	3701600	40.36	1500	13.89
Secondary school	48554	46.7	1555900	56.12	6134100	63.96	14068300	77.26	25558200	82.45	3899400	42.52	6800	62.96
University and above	54243	52.18	1104100	39.82	3017800	31.47	1078300	5.92	585400	1.89	11000	0.12	1300	12.04
Total		100		100		100		100		100		100		100

Sources: SSB, 2000 census

Table 8. Indices of average annual income per capita (1980=100)

Occupation	1990	2000	1990-2000
Menial work, Forestry, Animal Husbandry and Fishery	380.4	-	-
Industry	326.6	1984.56	1658.00
Construction	366.5	1853.55	1487.03
Geological prospecting, water conservancy, administration	327.2	1701.46	1374.27
Transportation, storage, postal and telecommunications	368.7	2301.17	1932.46
Wholesale, retail and catering	332.0	1856.76	1524.76
Banking and insurance	320.1	3346.36	3026.29
Real estate and social services	368.2	2558.33	2190.10
Health care, sports and social welfare	321.4	2438.75	2117.31
Education, culture, art, broadcasting, film and television	320.3	2401.21	2080.94
Scientific research and polytechnic services	302.1	2132.74	1830.67
Government institutions, party and social organizations	303.8	2474.47	2170.70

Sources: SSB, 2001