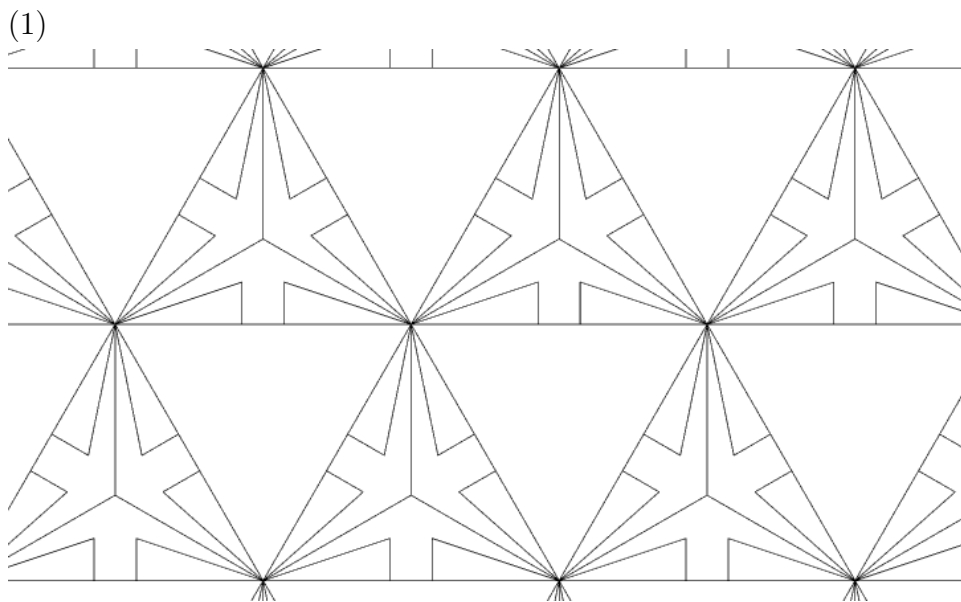


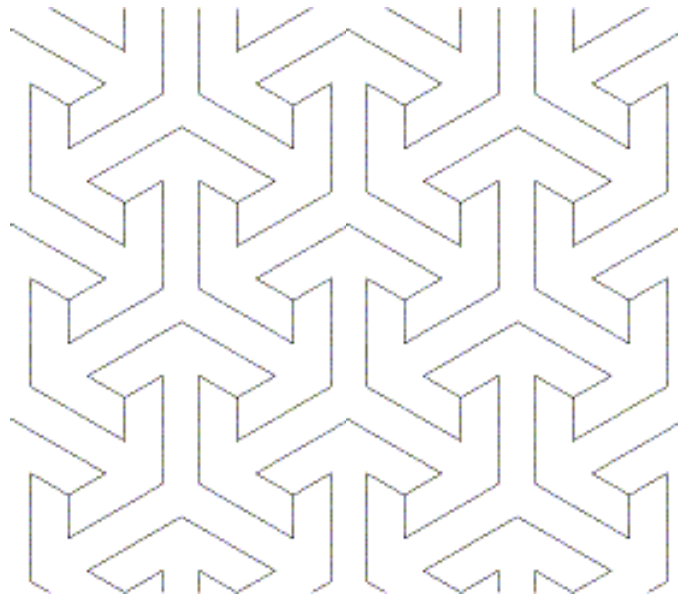
The following are wallpaper patterns. For each one, do the following:

- Draw a rhombic or rectangular fundamental region for the translations. If there are 6-centers in the pattern, base your fundamental region at a 6-center. If there are 4-centers in the pattern, base your fundamental region at a 4-center. If the only centers are 3-centers, and if there are lines of symmetry, base your fundamental region at a 3-center on a line of symmetry.
- Indicate all centers in the fundamental region (including its boundary). Use a color code or shape code to show what kind of center it is.
- Draw in all lines of symmetry that meet the fundamental region (including its boundary) in more than one point.
- If there is a glide reflection but no reflections, indicate the axis of the glide reflection by a dashed line.
- Write the name of the group below the pattern.



2

EXAM 3

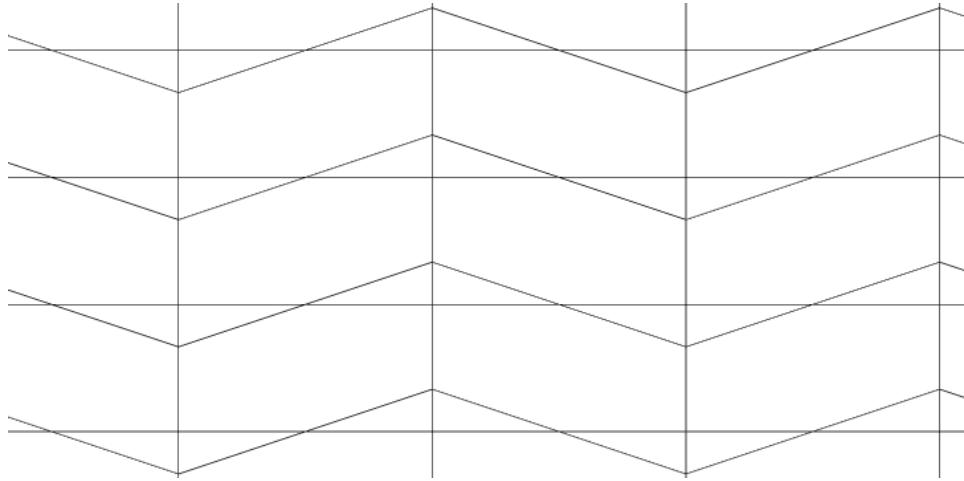


(2)

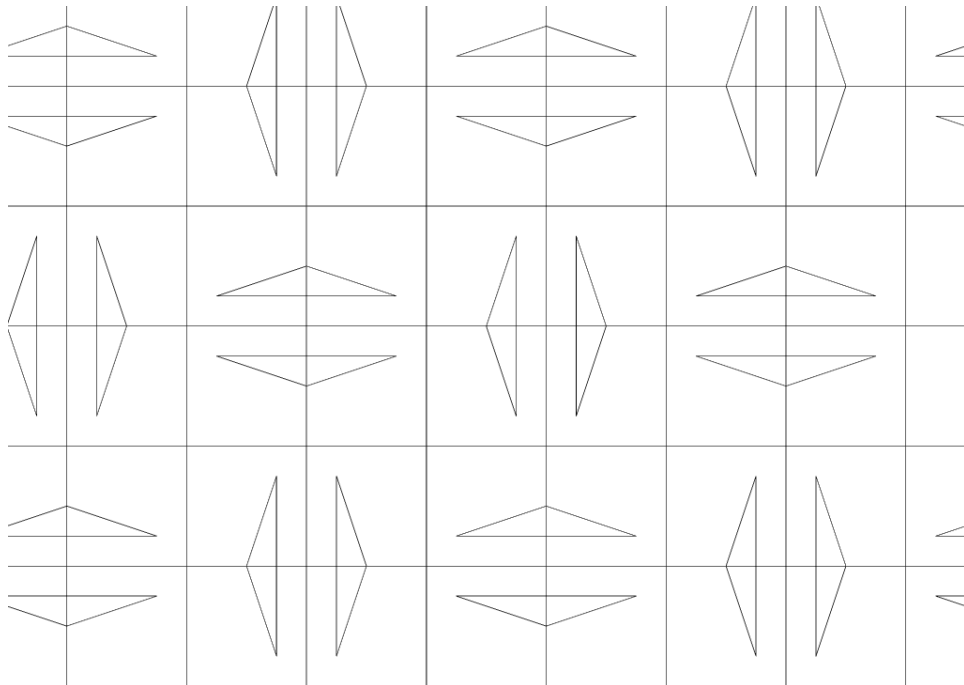
(3)



(4)



(5)



(6)

