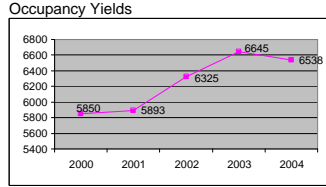
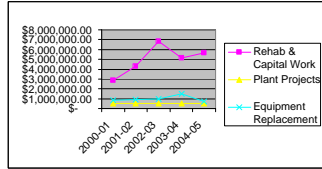


# STUDENT SUCCESS PERFORMANCE DASHBOARD, June 2005

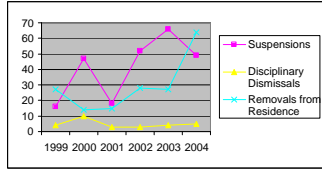
## Residential Life/Parent Programs



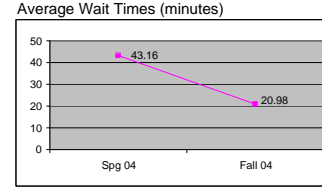
## Money Spent on Residence Hall Facility Upgrades



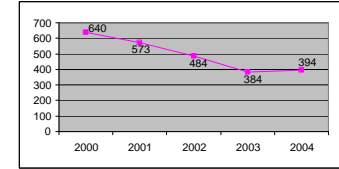
## Sanctions



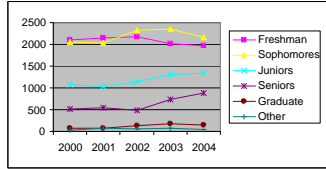
## Health Center



## Total Greek Membership (Fall)

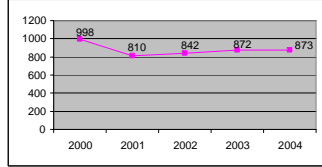


## Occupancy Yield by Class Year - Fall

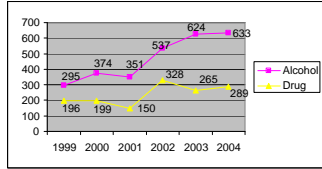


## University Police

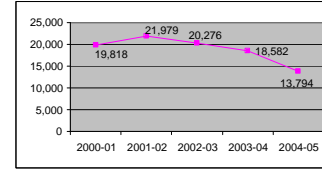
### Total Crimes



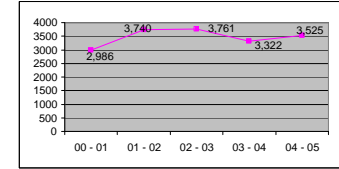
## Alcohol and Drug Cases



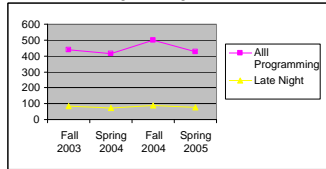
## Visits/year



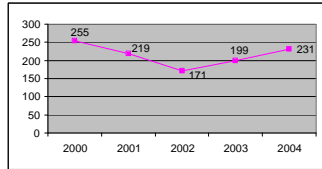
## Campus Center Events



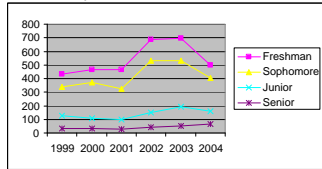
## Planned RA Programming in Residence Halls



## Total Arrests

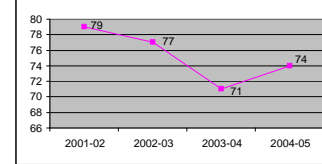


## Referrals by Class Year



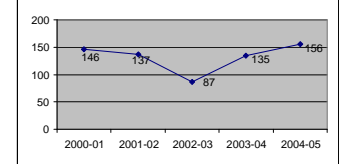
## Student Life/Greek Life

### Number of Student Association Funded Groups

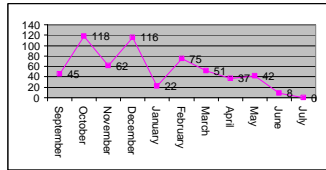


## Career Development Center

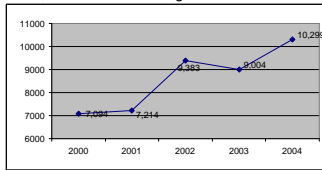
### Employer Participation



## Alcohol Letter to Parents - 2004-05

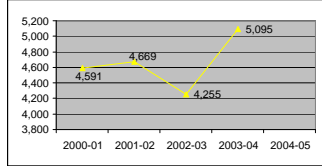


## Park, Walk and Talk Program

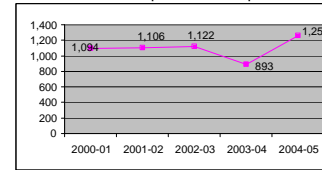


## Counseling Center

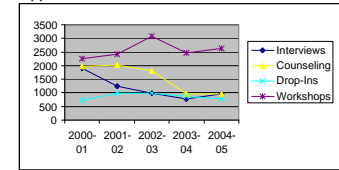
### Clinical Service Contacts



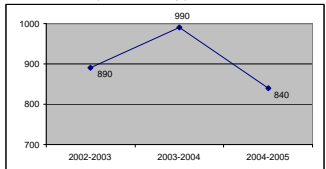
## Number of On-Campus Student Sponsored Events



## Appointments & Attendance

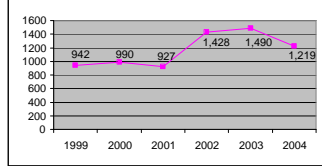


## Parent Club (membership)

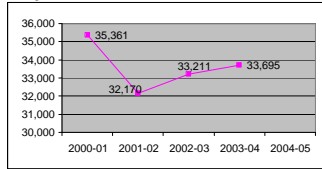


## Judicial Affairs

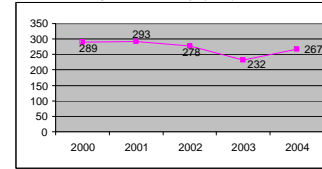
### Judicial Referrals (per academic year)



## Program Attendance

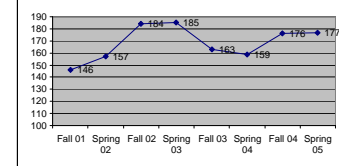


## Total Sorority Membership (Fall)

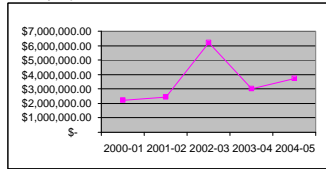


## Learning Disabled & Disabled Student Service

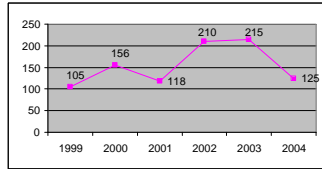
### LD Students - Total Registered by Semester



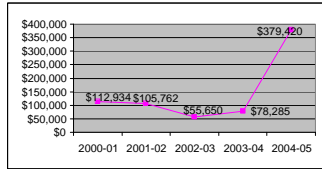
## Money Spent on Residence Hall Rehabs



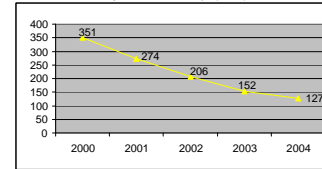
## Recidivists



## Grants and External Funds



## Total Fraternity Membership (Fall)



## Disabled Student Services

### Comparative Disabled Student Enrollment Data Over 5 Years (2000-2005)

