



HELPFUL HINTS: STUDENT POSTER DAY  
POSTER PREPARATIONS FOR THE SCHOOL OF PUBLIC HEALTH  
Maximum Dimensions: 48" wide X 36" high

Your illustrations will be viewed from a distance of 3 feet or more; therefore, your lettering should be about ¼" high and in bold type (approximately 16 points if professionally done). See samples below:

Sample – 16 type      Sample – 18 type

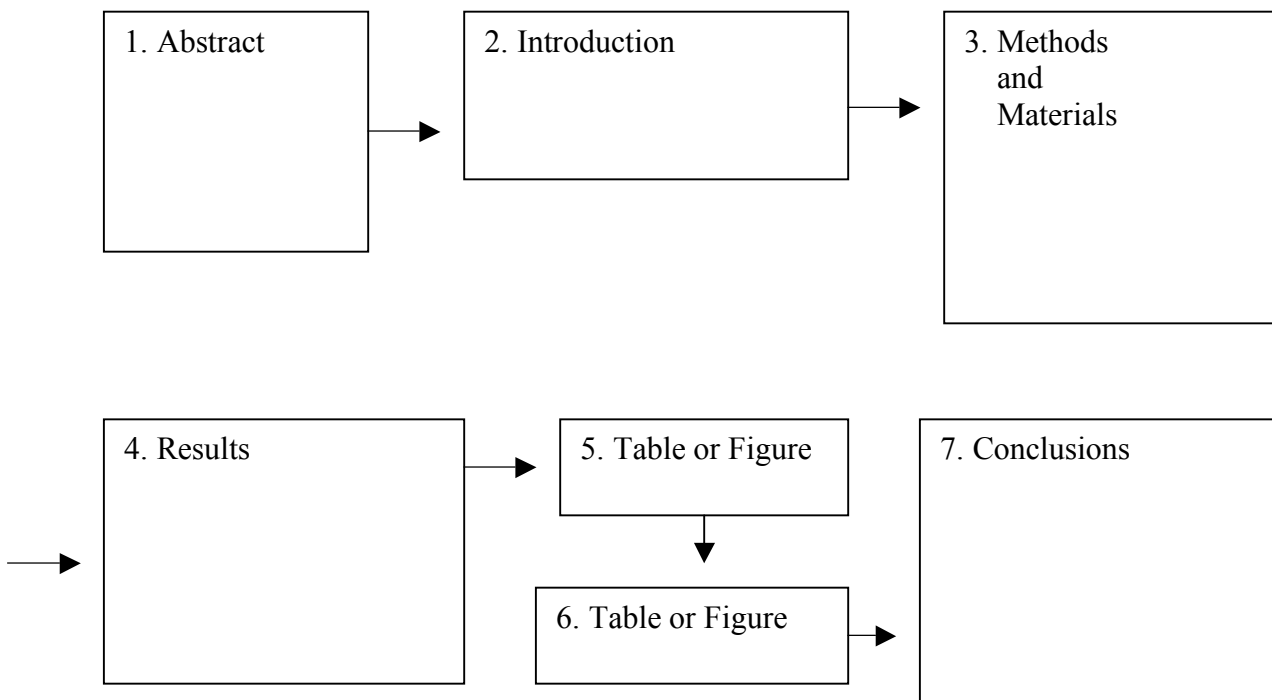
Illustrations are to be thumb-tacked or Velcro-ed to the poster board; so, you may wish to mat photographs and artwork on 10" x 12" cardboard or construction paper. Please bring your own thumbtacks or Velcro.

Charts, drawings, and illustrations can be similar to slides but without unnecessary detail.

- Try to keep everything as simple as possible
- Avoid 'arty' or ornate presentations. Keep captions brief and make labels clear.
- Indicating the sequence of material presented by arrows, numbers, or letters is helpful to the viewer. See example below.

Try to make your poster self-explanatory. This will leave you free to supplement information, answer questions, and become more involved in more in-depth discussion

Title — Author — Institution Banner



If you are submitting your abstract in a PDF file, please print the box below. Before sending the PDF file, please print it and confirm that the entire abstract fits within the boundaries of the printed box. If your title requires special characters or formatting, it may be included in the PDF file. The title would not count against the 250-character limit, but ***both the title and abstract must fit within this same space.***

A large, empty rectangular box with a thin black border, intended for the user to print their abstract and verify its fit within the 250-character limit.