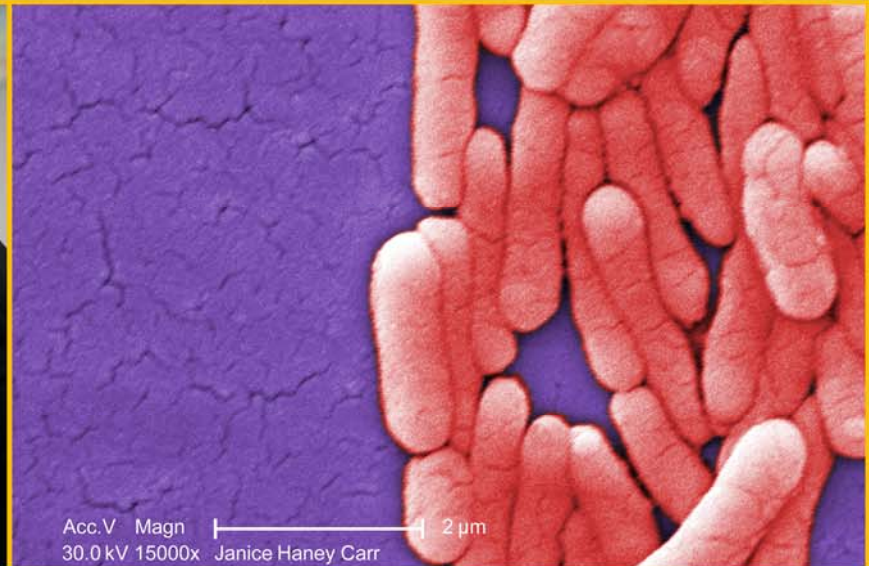


Course Guide



Foundations of Public Health



Foundations of Public Health

Table of Contents

Program Description	Page 3
Course Requirements	Page 4
Program Requirements	Page 5
Tracking and Application	Page 6
Student Tracking Sheet	Page 7
Registration Instructions	
o NYS Learning Management System	Page 8

Foundations of Public Health

Program Description

Foundations of Public Health is an online certificate program that provides learners with basic knowledge and principles related to Public Health. The certificate program addresses Tier 1 competencies in each of the 8 domains of the Council on Linkages Core Competencies for Public Health Professionals.

The certificate includes 11 self-paced, online courses and takes approximately 12-15 hours to complete. Individual courses provide continuing education credit for nurses, physicians and certified health education specialists. There is no time limit to complete the certificate, but participants are strongly encouraged to complete all online coursework 6 months post-registration.

Many of the courses provide continuing education credits. These credits (or contact hours) are awarded by course. The Foundations of Public Health certificate does not provide credits, nor does the New York State Department of Health Learning Management System.

The Center for Public Health Continuing Education (CPHCE) is nationally known for its distance learning training, including the award-winning Public Health Live (T2B2) webcast series and numerous interactive, self-paced online courses. To achieve its mission, “to provide exemplary education and training for the public health workforce”, CPHCE offers a variety of free and affordable webinars, webcasts and in-person trainings. Nursing, CME and Certified Health Education Specialist continuing education credits are available for many of its programs. Support for CPHCE is through state and federal funding.

Disclaimer: Foundations of Public Health was originally funded by the US Department of Labor and is now supported by the Center for Public Health Continuing Education.

Foundations of Public Health

Course Requirements

Click on the course title for course description

Number	Title	Continuing Education Credits Offered	Time to Complete
NYNJ-201	Orientation to Public Health	No Credits Offered	2 hours
UACPHP-206	Field Epidemiology	CNE, CME, CPH	1 hour
UACPHP-200	Introduction to Environmental Health Microbiology and Communicable Disease Control	No Credits Offered	1 hours
NYNJ-257	Program Development and Evaluation	CHES/MCHES, CNE, CME, CPH	1 hour
ESPHTC-FIN101	Doing A Lot with A Little: Economic Analysis in Public Health	CHES/MCHES, CNE, CME,	1 hour
NYNJ-182a	Messenger Chronicles: Introduction & The Four Cs	CHES/MCHES, CNE, CME	0.5 hour
NYNJ-042	Exploring Cross-Cultural Communication	CHES, CNE, CME,	1.5 hours
NYNJ -089a	Health Literacy & Public Health: Introduction	CHES/MCHES, CNE, CME	1.5 hours
ESPHTC-HE101	Addressing Health Equity	CHES/MCHES, CNE, CME, CPH	1 hour
ESPHTC-294	Community Dimensions of Practice <u>(Part I)</u>	CHES/MCHES, CNE, CME, CPH	1 hour
ESPHTC-302	Community Dimensions of Practice <u>(Part II)</u>	CHES/MCHES, CNE, CME, CPH	1 hour
Total Hours			12.5 hours

Foundations of Public Health

Program Requirements

Requirements:

The Foundations of Public Health Certificate Program is targeted towards professionals new to the field of public health, professionals currently working in public health with limited or no formal education in the field, and professionals who want a basic understanding or refresher on the foundations and principles of public health. However, **anyone** is able to complete the program, regardless of profession or geographic location.

Enrolling:

Candidates should enroll through the [New York State Department of Health Learning Management System website](#). Please see complete REGISTRATION DIRECTIONS located in the Student Guidebook on pages 8-13.

The New York State Department of Health Learning Management System (LMS) is a “registration system” used to group many courses together. The courses are from various educational institutions and are not “housed” on the LMS. You will need to go into the courses’ systems and create a username and password.

Helpful Hint: Use the same username and password for each system. You may use the space below to keep track of your username(s) and password(s).

<p>New York State Department of Health Learning Management System</p> <p>Username: _____</p> <p>Password: _____</p> <p>Empire State Public Health Training Center courses (ex. ESPHTC-070)</p> <p>Username: _____</p> <p>Password: _____</p>

Foundations of Public Health

Tracking & Application

Tracking your progress:

Participants may want to track their progress to ensure they meet the requirements for the Foundations of Public Health Certificate. **Page 7** includes a tracking sheet that may be used for this purpose. **At the completion of your courses NYLearnsPH.com LMS Administrators will be made aware of your status and your course record will be updated *within two weeks of completion in the LMS.***

Applying for your Foundations of Public Health Certificate:

Once you have completed all requirements, you may apply for your certificate. Foundations of Public Health is entirely paperless, which means that once you complete your course requirements, you simply need to complete the online application, which can be found at <http://www.informz.net/survistapro/s.asp?id=5811>

The application will ask for basic information, including what email you would like your certificate sent to, and will be checked by our staff for accuracy. **After submitting the Foundations Evaluation & Request for Certificate, please allow 2-4 weeks for processing.**

Questions? Contact the Center for Public Health Continuing Education at (518) 402-0330 or coned@albany.edu.

Foundations of Public Health

Student Tracking Sheet

Course Requirements

Orientation to Public Health (NYNJ-201)	Date completed:
Field Epidemiology (UACPHP-206)	Date completed:
Introduction to Environmental Health Microbiology and Communicable Disease Control (UACPHP-200)	Date completed:
Program Development and Evaluation (NYNJ-257)	Date completed:
Doing A Lot with A Little: Economic Analysis in Public Health (ESPHTC-FIN101)	Date completed:
Messenger Chronicles: Introduction & The Four Cs (NYNJ-182a)	Date completed:
Exploring Cross-Cultural Communication (NYNJ-042)	Date completed:
Health Literacy & Public Health: Introduction (NYNJ -089a)	Date completed:
Addressing Health Equity (ESPHTC-HE101)	Date completed:
Community Dimensions of Practice (Part I) (ESPHTC-294)	Date completed:
Community Dimensions of Practice (Part II) (ESPHTC-302)	Date completed:
Total Hours Completed	

Once you have fulfilled the requirements, please complete the online certificate application at :
<http://www.albany.edu/sph/cphce/certificates.shtml>

Have questions? Please email coned@albany.edu or call 518-402-0330

Foundations of Public Health

Registration - Learning Management System

Step 1: Register on LMS

To register for the Foundations of Public Health certificate program, please go to the New York State Department of Health's Learning Management System:

<https://www.nylearnsph.com/Public/>

Click on "Click Here" on the left upper hand side.
(below **Login**)

Department of Health
Information for a Healthy New York

USERNAME:

PASSWORD:

LOGIN

Not registered yet?
[CLICK HERE](#)
to register with us

Home

Step 2: Create a Profile

You will be asked to create a profile. Please complete all required fields and include your agency name in the first line of your work address, in addition to the Agency drop down menu. (You DO NOT need to take any assessments. Those are optional and are not a part of this certificate.)

Once you have completed your profile, please click on "**Submit your Registration**".

If you are already registered on the LMS, you DO NOT need to create a new profile.

Foundations of Public Health

Registration - Course Requirements

Step 1:

Under “User Menu” on the left hand side, please click on “Course Catalog.”

Step 2:

Click on “Program Catalog” at top center of the page.

New York State State Agencies

Department of Health - Learning Management System
Information for a Healthy New York

USERNAME:

PASSWORD:

LOGIN

Not registered yet?
[CLICK HERE](#)
to register with us

Professional Development in 3 steps:

- 1 Assess and maintain your competencies
- 2 Register for recommended courses
- 3 Get trained

Announcements

PH Educator Curriculum
Required for all PHEs hired after August 20, 2008

****Public Health Nurses****
Mandated training for new PHN2 and SPHN hires

Leadership Assessment
Assess your leadership skills & knowledge

CDC Social Media Toolkit
CDC guidance on best practice use of social media

CTI-200 & CTI-300

My Current Courses
Please log out

Home
Getting Started
Password Retrieval
LMS Demos
Course Catalog
Conference
Calendar

New York State State Agencies

Department of Health - Learning Management System
Information for a Healthy New York

USERNAME:

PASSWORD:

LOGIN

Not registered yet?
[CLICK HERE](#)
to register with us

Home
Getting Started

Course Catalog

[Course Catalog](#) | [Program Catalog](#) | [Advanced Search](#)

There are currently 872 courses offered in the Course Catalog. [View all courses](#) or search or browse for specific types of courses.

Browse Catalog By Category

View All Courses
 Administration
 Chronic Disease

OR Search Catalog Query

Course Keyword Search

Course Format

Foundations of Public Health

Registration - Course Requirements

Step 3:

Click on the title of the Program to begin registering for all of the required courses.

Program Catalog

Course Catalog | Program Catalog | Advanced Search | Recommended Courses | Requirements

Course Keyword Search:

Course Format:

Course Category:

Available Programs

- Public Health Nurse 2 Continuing Education Program
- Supervising Public Health Nurse Continuing Ed
- The Public Health Educator Core Curriculum 2010
- Public Health Nurse Ready Certificate Program
- 2011- 2012 New Director Commissioner Program
- Basic Environmental Health Program - 2012 (Fall)
- [Foundations of Public Health Certificate Program](#)

Step 4:

Please read the information on the page and scroll down to the bottom of the page and click "Begin Program Enrollment."

Enrollment for Foundations of Public Health certificate 1. If you have already enrolled in this program, each course below can be completed via My Courses - Current Courses or My Courses - Current Programs tab.

Course Status Table

Status	Date	Course	Course #	Formats	Category
Enrolled	2/9/2015	ESPHTC-294 Community Dimensions of Public Health Practice (Part 1)	ESPHTC-294	Online	Core Public Health
Enrolled	9/3/2015	ESPHTC-302 Community Dimensions of Public Health Practice (Part 2)	ESPHTC-302	Online	Core Public Health
Not Enrolled		ESPHTC-FIN101 Doing a Lot With a Little: Economic Analysis in Public Health	ESPHTC-FIN101	Online	Administration
Not Enrolled		ESPHTC-FPH Foundations of Public Health Application	ESPHTC-FPH	Online	Core Public Health
Not Enrolled		ESPHTC-HE101 Addressing Health Equity: A Public Health Essential	ESPHTC-HE101	Online	Core Public Health
Enrolled	12/12/2014	NYNJ-042 Communicate to Make a Difference (Part 1): Exploring Cross-Cultural Communication	NYNJ-042	Online	Communication
Not Enrolled		NYNJ-089a Health Literacy and Public Health: Introduction (Module 1 of 2)	NYNJ-089a	Online	Communication
Not Enrolled		NYNJ-182a The Messenger Chronicles: Introduction to effective communication strategies for difficult conversations	NYNJ-182a	Online	Communication
Enrolled	9/8/2014	NYNJ-201 Orientation to Public Health	NYNJ-201	Online	Core Public Health
Not Enrolled		NYNJ-257 Program Development and Evaluation	NYNJ-257	Online	Core Public Health
Enrolled	8/13/2014	UACPHP-200 Introduction to Environmental Health Microbiology and Communicable Disease Control	UACPHP-200	Online	Core Public Health
Enrolled	11/24/2014	UACPHP-206 Field Epidemiology	UACPHP-206	Online	Epidemiology/Surveillance
<input type="button" value="Begin Program Enrollment"/>					

Foundations of Public Health Registration - Course Requirements

Step 5:

You will see a "Course Status Table". Scroll down to enroll for each required course. Click on "Enroll".

Please complete enrollment for any courses listed below.

NYNJ-042 Communicate to Make a Difference (Part 1): Exploring Cross-Cultural Communication

Enrollment Deadline	Section	Course Format	Start/End Dates	Meeting Times	Location	Instructor (s)	Speaker (s)
<input type="button" value="Enroll"/> Ongoing	Exploring Cross-Cultural Communication	Online	Ongoing				

UACPHP-206 Field Epidemiology

Enrollment Deadline	Section	Course Format	Start/End Dates	Meeting Times	Location	Instructor (s)	Speaker (s)
<input type="button" value="Enroll"/> Ongoing	Field Epidemiology	Online	Ongoing				

NYNJ-080 Health Literacy and Public Health (Modules of)

Step 6:

After clicking "Enroll", you must select your credit type.

****PLEASE NOTE**** The LMS does not provide continuing education provide credits. The courses and their educational

Please complete enrollment for any courses listed below.

NYNJ-042 Communicate to Make a Difference (Part 1): Exploring Cross-Cultural Communication

Enrollment Deadline	Section	Course Format	Start/End Dates	Meeting Times	Location	Instructor (s)	Speaker (s)
<input type="button" value="Enroll"/> Ongoing	Exploring Cross-Cultural Communication	Online	Ongoing				

You must select the credit type to complete the registration for the course.

Name of Course: NYNJ-042 Communicate to Make a Difference (Part 1): Exploring Cross-Cultural Communication

Select Your Credit Type: [\(More Info\)](#)

- 2.5 CNE
- 2.5 CME
- 2.5 CEU
- None

Foundations of Public Health

Registration - Course Requirements

Step 7:

Continue to enroll in each of the requirement courses. Once you have enrolled for all the courses, you will see a Program Enrollment – Summary page.

Click “Launch Course” to begin any of the requirement coursework.

Foundations of Public Health certificate 1 - Course Status List

Scroll down to continue with program course enrollment

Course Status Table

Status	Date	Contact Admin	Course Name
Enrolled	9/8/2014	Email	NYNJ-201 Orientation to Public Health Orientation to Public Health <input type="button" value="Launch Course"/> <input type="button" value="Unenroll"/>
Enrolled	12/12/2014	Email	NYNJ-042 Communicate to Make a Difference (Part 1): Exploring Cross-Cultural Communication Exploring Cross-Cultural Communication <input type="button" value="Launch Course"/> <input type="button" value="Unenroll"/>
Enrolled	8/13/2014	Email	UACPHP-200 Introduction to Environmental Health Microbiology and Communicable Disease Control Microbiology: An Introduction <input type="button" value="Launch Course"/> <input type="button" value="Unenroll"/>
Enrolled	11/24/2014	Email	UACPHP-206 Field Epidemiology Field Epidemiology <input type="button" value="Launch Course"/> <input type="button" value="Unenroll"/>
Enrolled	2/9/2015	Email	ESPHTC-294 Community Dimensions of Public Health Practice (Part 1) Community Dimensions of Public Health Practice (Part 1) <input type="button" value="Launch Course"/> <input type="button" value="Unenroll"/>
Enrolled	9/3/2015	Email	ESPHTC-302 Community Dimensions of Public Health Practice (Part 2) Community Dimensions of Public Health Practice (Part 2) <input type="button" value="Launch Course"/> <input type="button" value="Unenroll"/>

Foundations of Public Health

Registration - Course Requirements

Step 8:

Once you are on the ESPHTC website simply login or complete the one-time registration and you will be launched directly into the course you requested. Whenever you return to this, or any other ESPHTC course the system will remember you and ask you to login using the Username and Password you selected during the ESPHTC registration.

NOTE

Upon completion of your courses, NYLearnsPH.com LMS Administrators will be made aware of your status and your course record will be updated within two weeks of completion. Anytime you enroll in and launch a new ESPHTC course from www.NYLearnsPH.com you will be recognized and will only need to enter your PHTC password to access a course.

The screenshot shows the PHTC Online login interface. At the top, there are navigation links for "PHTC Online", "Training Catalog", and "Login". The main heading is "Log In". Below this, a light blue box contains a note: "Note: Please make sure to log in using your PHTC Online username and password, not those for any other LMS." The login form includes a "Username:" label with an input field, a "Password:" label with an input field, and a blue "Log In" button. To the right, a section titled "Having trouble logging in?" offers three options: "Create a PHTC Online account" (with a plus icon), "Look up your username and password" (with a magnifying glass icon), and "Contact technical support" (with an envelope icon). A small note under the first option states: "You must have an account with PHTC Online, which is different from your LMS account." At the bottom left, the copyright notice reads: "© 2015 Empire State Public Health Training Center".