

### Laboratory Confirmed WNV Infections in the United States

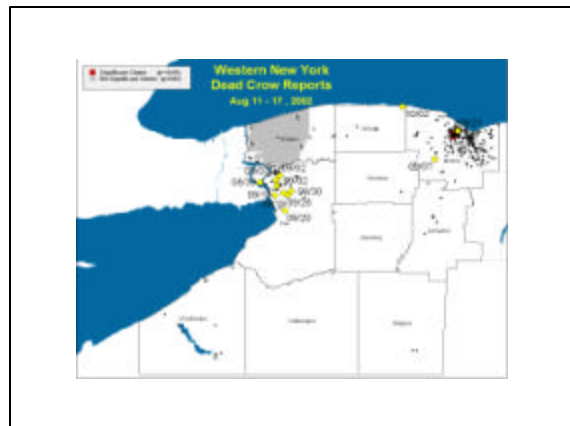
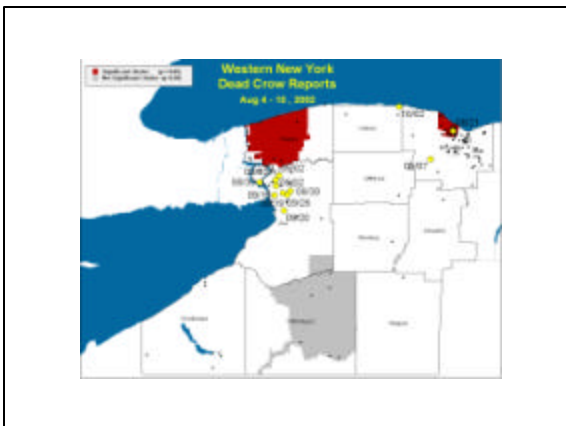
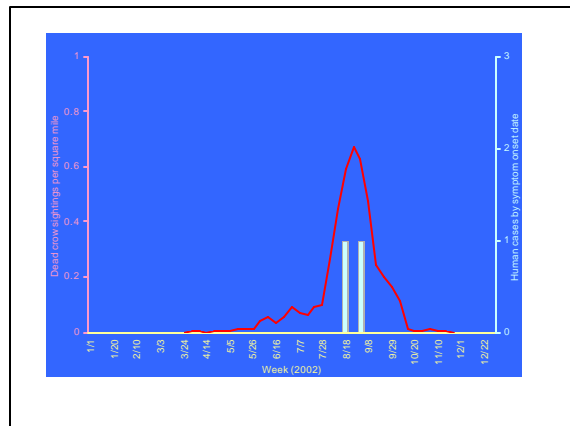
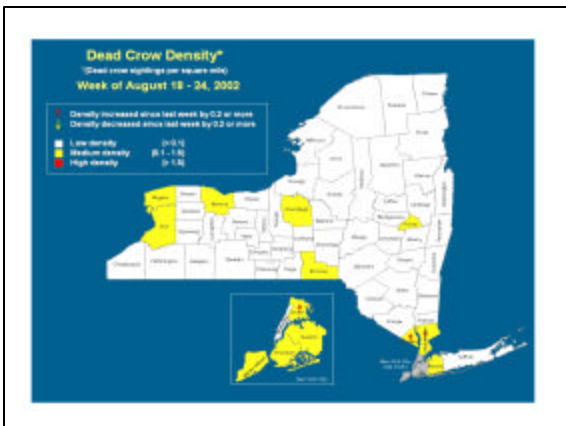
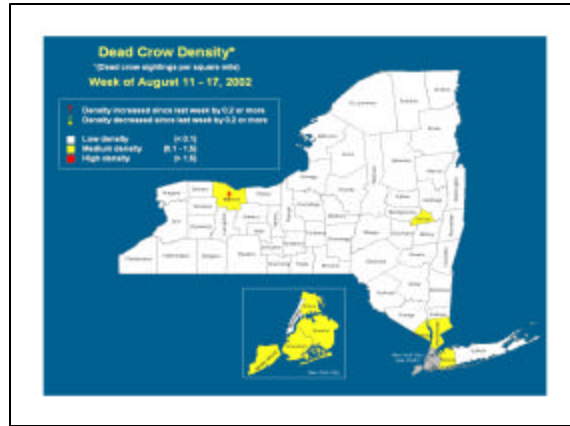
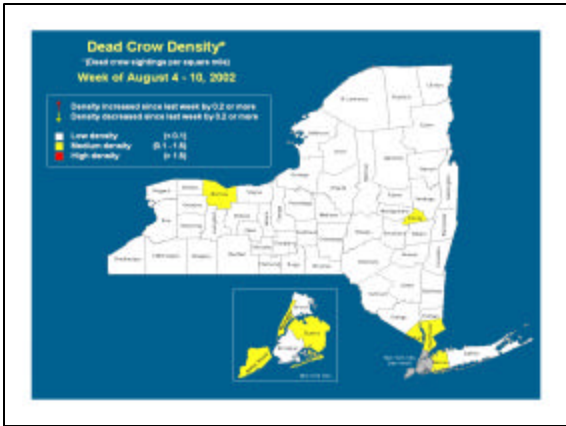
	1999	2000	2001	2002
<b>Humans (Deaths)</b>	62 (7)	21 (2)	65 (9)	4,071 (274)
<b>Mosquito Pools</b>	17	522	863	6,543
<b>Birds</b>	296	4,305	6,669	17,258
<b>Horses</b>	25	70	752	14,848

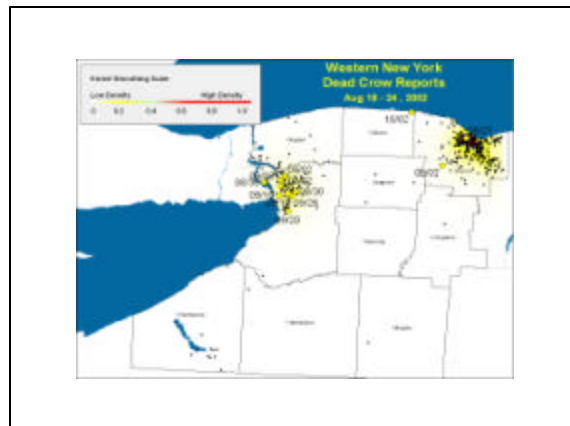
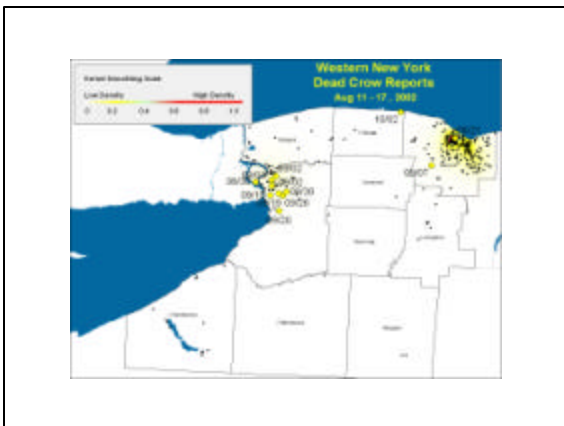
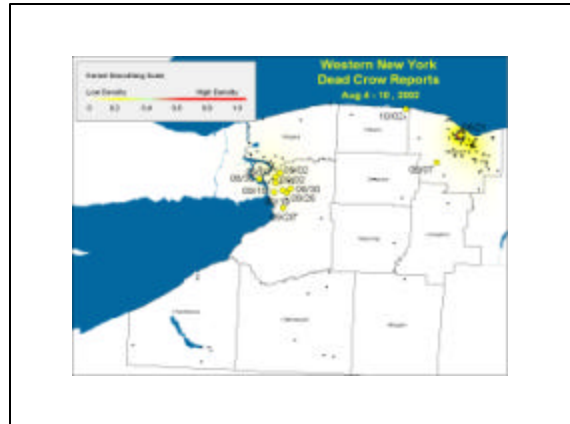
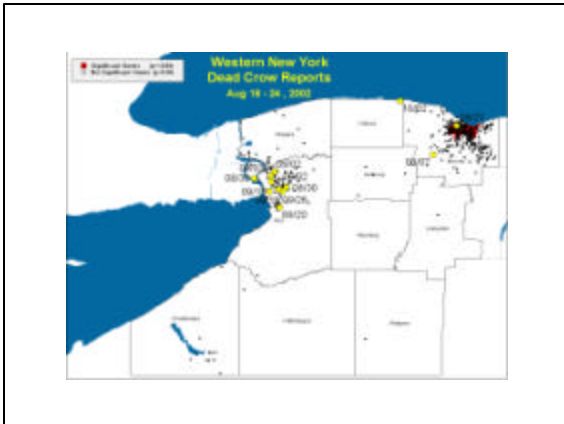
- ### WNV Issues
- What is the “value” of sentinel species?
  - Do all animals receive the same level of diagnostic attention?
  - Species bias – human/domestic/wild
  - Cultural divide between human health and veterinary health
  - Ignoring the virus in wildlife could hinder public health

- ### “Classical” Clinical Description
- Incubation period of 2-15 days
  - Most illness: “West Nile fever”
    - Fever, headache
    - Rash, lymphadenopathy
    - Nausea, vomiting
  - Rarely pancreatitis, hepatitis, myocarditis

- ### “Classical” Clinical Description
- Severe neurologic illness categories
    - Meningitis
      - Fever, stiff neck, CSF pleocytosis
    - Encephalitis
      - Altered mental status
    - “Meningoencephalitis”
    - Acute flaccid paralysis







### To Report A Dead Bird In NYS

- Contact county health dept. or call the dead bird hotline, 1-866-537-BIRD (2473)
- Report all dead crows.
- Not all birds will be picked up/tested.
- If testing is not required, dispose of bird, wear gloves to bury or double-bag for trash.
- County test results on DOH web site:  
[www.health.state.ny.us](http://www.health.state.ny.us)

### Biosafety Issues

- Investigations that involve handling of live WNV should be conducted under BSL-3 containment... BSL-2 facilities, with modifications, can achieve an acceptable level of safety for routine diagnostic procedures, including necropsies
- Laboratory workers should use every precaution to minimize their risk for exposure to fluids or tissues during handling

Laboratory-Acquired WNV Infections – United States, 2002  
MMWR 51 (50): 1133-1335, 2002



