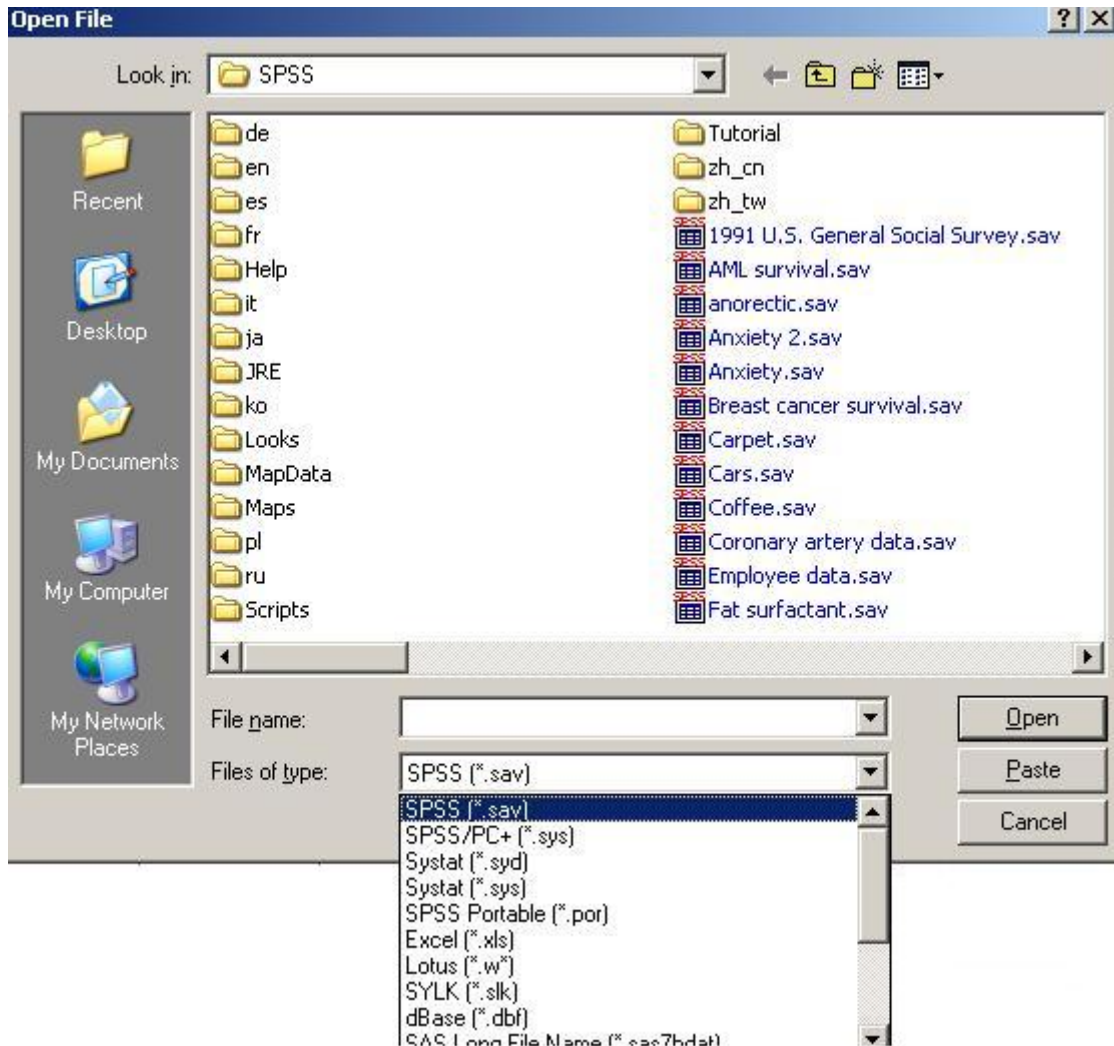
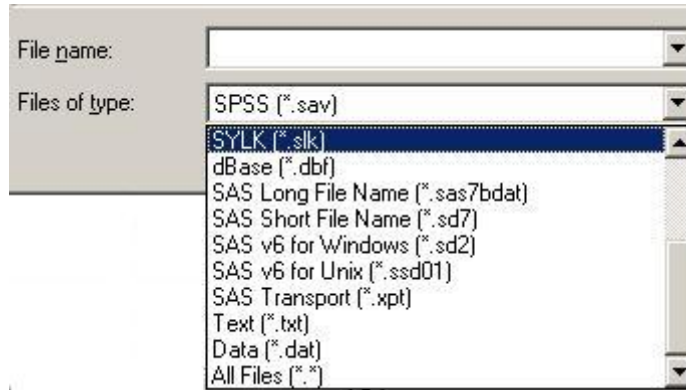


## Importing and Exporting External Data on SAS for Windows<sup>1</sup>

SPSS for Windows is able to read data files with different formats, including Systat, EXCEL, Lotus, SYLK, dBase, SAS for UNIX, SAS for Windows, SAS Transport, and text. Go to **File, Open, and Data**, you will see below window:



<sup>1</sup> Prepared by Hui-shien Tsao, Center for Social and Demographic Analysis, University at Albany, March 10, 2006.



You can also save a SPSS data file into a different format, by clicking **SAVE AS** and picking a file format from **Save as type**. Similar data type as the above window will appear in the drop down menu.