

CAS Computing Services

Uninstalling and Installing SPSS

Contents:

Introduction to Guide.....	1
Uninstalling SPSS.....	2
Installing SPSS.....	4
Licensing SPSS.....	7
Obtaining a Lock Code.....	7

Introduction to Guide

Information for Using This Guide

This guide is to help you install, authorize ("license"), and update your new copy of IBM SPSS Statistics 19 for Windows. To begin the process you will need to uninstall any previous version of SPSS on your system.

During installation and licensing, screens will be displayed in which you must make choices or provide information. Among the information you must is your SPSS **license code**.

You will need:

- Administrative rights on the computer you are working on
- Network access to access the SPSS installer over the network
- OR -
- IBM SPSS Statistics 19 CD
- Your license code

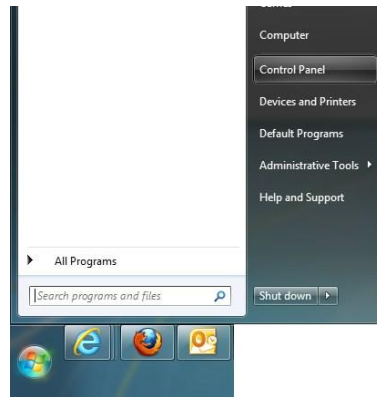
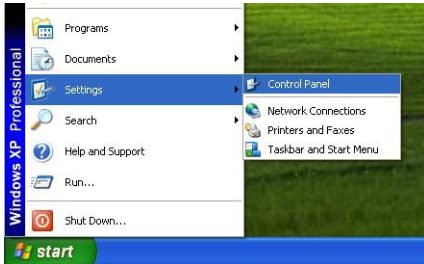
Please feel free to print out this guide for reference.

If at any time a problem occurs, such as an error message or the program freezes, it is safe to cancel/abort the uninstall or installation process. Please contact CAS Computing should you require assistance or have any questions:

CAS Computing
518-442-2651
cascomp@albany.edu

Uninstalling SPSS

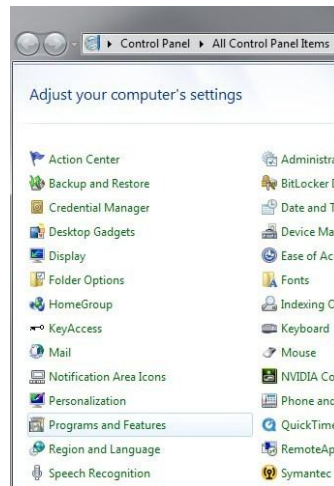
Removing SPSS in Windows XP and Windows 7



To remove SPSS, you will need to go to **Add or Remove Programs** in the **Control Panel**.

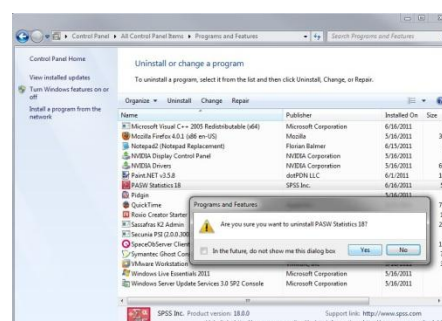
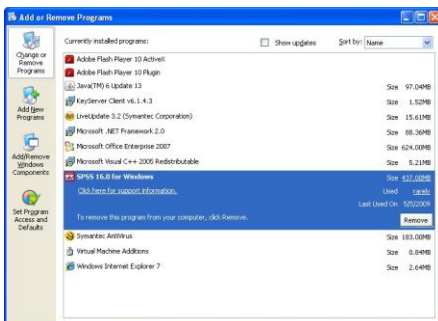
In Windows XP (left image):
Click on **Start**, **Settings**, then **Control Panel**.

In Windows 7 (right image):
Click the **Windows** button, select **Control Panel**.



In the Control Panel, locate and double-click on **Add or Remove Programs** in Windows XP or **Programs and Features** in Windows 7.

You may have to Switch your view to **Classic View** to see the icon for **Add or Remove Programs**.



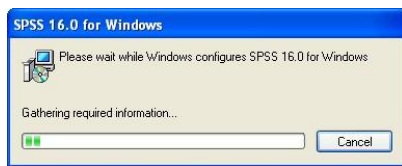
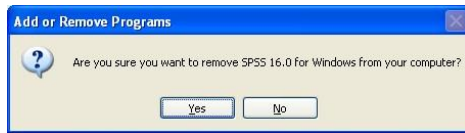
Windows XP: In **Add or Remove Programs**, scroll down the list to locate your version of SPSS to uninstall.

Once you have located it, click it once to highlight it. You should now see the option to **Remove** the software. Click on **Remove**.

Windows 7: In **Programs and Features** double-click the SPSS version to remove. Click **Yes** to uninstall.

Uninstalling SPSS

Removing SPSS in Windows XP



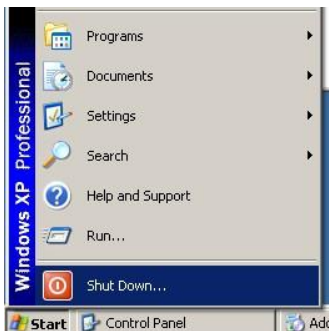
You will be prompted if you want to remove SPSS.

Select **Yes**.

The uninstaller will begin to run. Various windows may pop up during the uninstallation process.

Do not cancel the uninstallation process.

This may take anywhere from 3-10 minutes depending on your system.



Once the uninstall process has completed, restart your system.

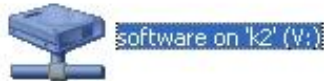
To restart your system in Windows XP, click on **Start, Shut Down**, and from the drop-down menu select **Restart**.

To restart your system in Windows 7, click on **Windows button**, arrow next to **Shut Down**, and from the drop-down menu select **Restart**.



Installing SPSS

Installing SPSS in Windows XP



To install SPSS from off the network, you will need to navigate to your network share.

You also need to be an administrator on the machine you are installing the software on.

Open My Computer or Windows Explorer and select the V: drive (software on 'k2').

From the **V:** drive open the folder Licensed.

Then open the folder **SPSS**.

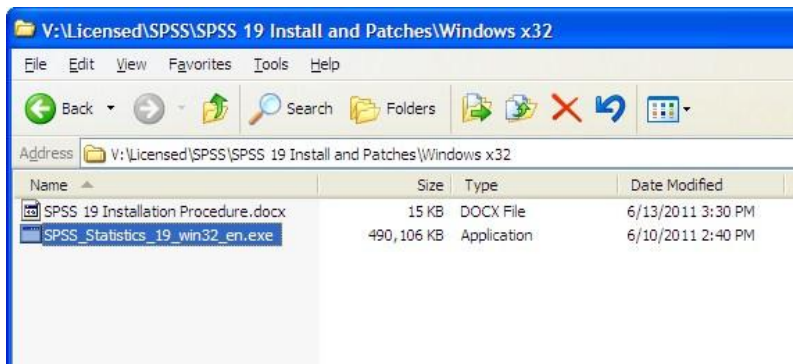
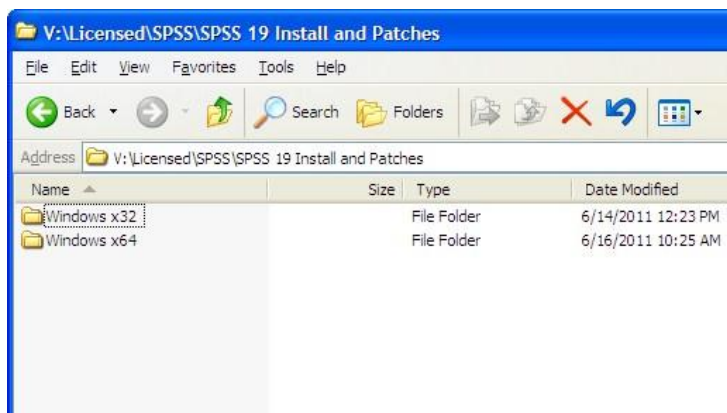
Open the **SPSS 19 Install and Patched** folder.

Choose the installer you want. (Generally **Windows XP users want x32** and **Windows 7 users want x64**)

Double-click on the '**SPSS Statistics 19.exe**' icon to launch the installer window.

Important!

Please only double-click the setup icon once. It may take a few minutes for the installer window to appear.



Installing SPSS

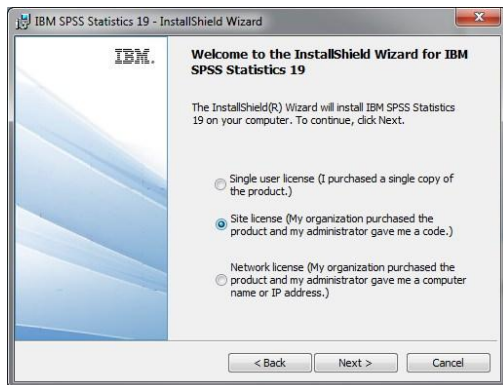
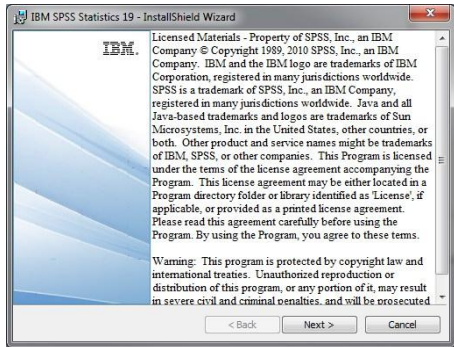
Installing SPSS in Windows XP



After double-clicking setup the IBM SPSS Statistics 19 installer a window will appear.

This may take some time to begin.

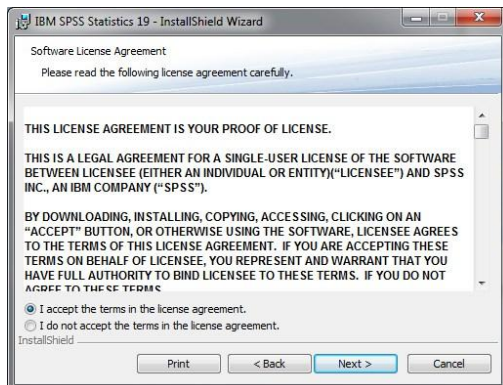
You will be presented with the InstallShield Wizard. Click **Next**.



A new window will appear asking what to do next.

Select the option **Site license** if not already selected.

Click **Next**.



The next window to appear will be the License Agreement.

Feel free to review this document.

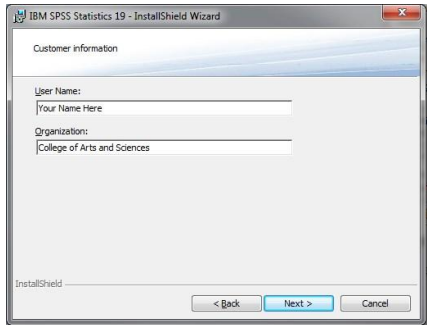
Choose the option :

I accept the terms in the license agreement.

By default, this option is not checked.

Installing SPSS

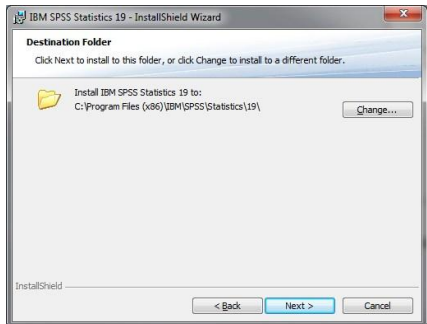
Installing SPSS in Windows XP



The next window will ask for customer information.

Some of the information should be filled out for you, but feel to change the User Name information as necessary.

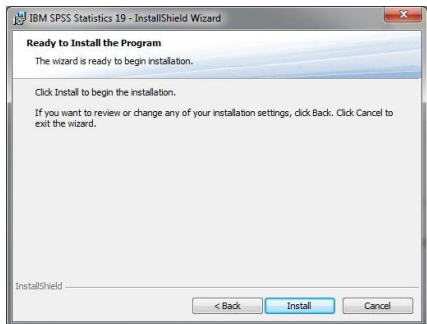
Click **Next**.



The Destination window will ask you where to install SPSS.

Unless there is a specific reason to change it, keep the default installation path.

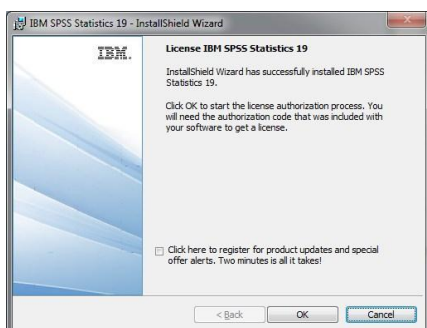
Click **Next**.



Next, the Ready to Install the Program window will appear.

Click on **Install**.

The window will change to one with a progress bar. Several windows may open/close. Please give the installer between 5-15 minutes to complete.



The last window should tell you that the IBM SPSS Statistics 19 has been successfully installed.

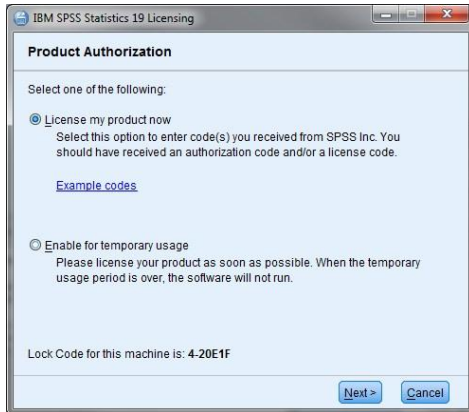
Uncheck the 'Click here to register...' option.

Click **OK**.

In a few moments the License Wizard should begin.

Licensing SPSS

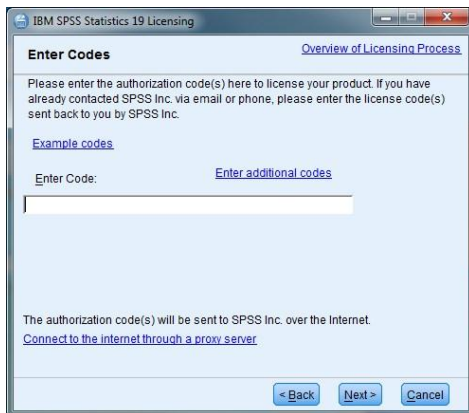
Applying Your License for SPSS in Windows XP



The License Authorization Wizard will appear at the end of the SPSS Statistics Installation or you can get to it from the Start Menu where SPSS 19 is located.

To license your copy of SPSS, select the first option **License my product now**.

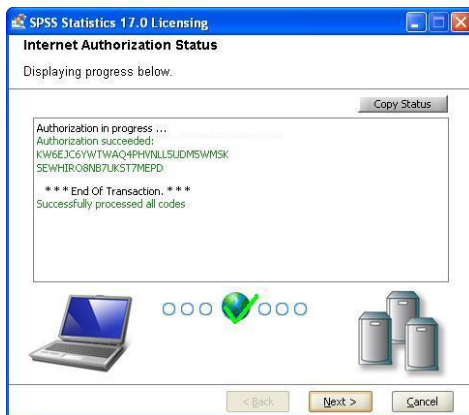
Click **Next**.



In the **Enter Code:** field, please enter the license or authorization code given to you.

The license or authorization code entry is not case sensitive.

Once you have entered in the code, click **Next**.



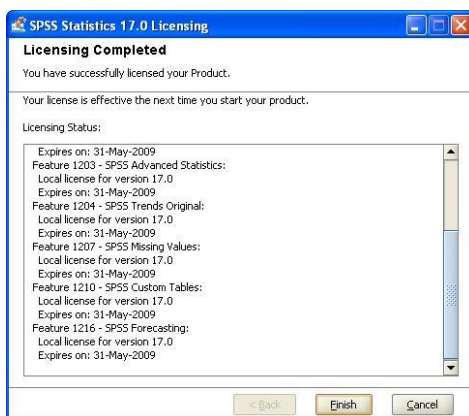
The progress screen may appear blank for several seconds.

If the authorization is successful you will receive green text telling you that that the process has **Successfully processed all codes**.

Hit **Next** to continue.

If you receive red failure text, hit Back, and check the code to make sure it was input correctly and try again.

If the red text persists, contact your technology coordinator with your Lock Code (see previous page).



If your authorization was successful, the Licensing Completed window will appear showing you the list of packages/modules licensed along with the expiration date of the license.

Click **Finish** to close the License Authorization Wizard.